

Sotheby's EST. 1744



WATCHES

LONDON | 16 APRIL 2019



FRONT COVER
LOT 85
BACK COVER
LOT 82
THIS PAGE
LOT 71

Quittance

TAXES
 Taxes ayant fait l'objet
 de déclaration verbale

DOUANES FRANÇAISES
 24 JUILLET 72
 ST JULIEN
 (Cachet du bureau)

BUCHERERE
 MAISON D'HORLOGERIE ET DE JOAILLERIE
 GENÈVE
 ST. MORITZ INTERLAKEN BURGENSEE
 T. 022 1 11 11

Bernard

WATCHES

DÉSIGNATION DES MARCHANDISES

MONTANT des droits et taxes

Pays d'origine : *Suisse*

*Une montre en acier
 Rolex Chronographe
 n° 6262/ac
 1.000 fr*

CCA CCD P. CH. P. P. CH GT 11 026 S'FR. 770

Chronographe

666
 043
 503



ROLEX
 OYSTER

GUARANTEE

The Rolex Watch Company Limited guarantee the dependable functioning of this Rolex Oyster for the period of one year from the date of purchase, damage resulting from ill-treatment excepted.

This watch has been entirely manufactured by Rolex, Bienne and Geneva. It has been minutely examined and regulated and is certified to be in perfect condition.

IMPORTANT:
 Should your Rolex require attention during the guarantee period, please return it to the jeweller who supplied it or to any of the official Rolex Service Stations listed in this booklet.

Name and address of purchaser

Jeweller's name and address
BUCHERER
GENÈVE

Date of purchase

1832
6262/ac
14.7.71

ROLEX
 OYSTER

This guarantee is valid only if signed and dated by the jeweller at the time of purchase.

BUREAUX SUISSES DE CONTRÔLE OFFICIEL DE LA MARCHÉ DES CHRONOMÈTRES

Schweiz. Institute für amtliche Chronometerprüfungen
 Swiss Institutes for official Chronometer tests
 Oficinas suizas de control oficial de Cronómetros

Epreuves pour montres-bracelet - Prüfungen für Armbanduhren
 Pruebas para relojes de pulsera - Trials for Wristlet-watches

Swiss made

Bulletin de marche
 Gangschein
 Boletín de marcha
 Watch Rate Certificate

N° 1743314

Mouvement
 Werk
 Máquina
 Movement

N° 10183475

Genre
 Uhrenart
 Género de reloj
 Type of watch
 Echappement
 Hemmung
 Escape
 Escapement

B

Particularités
 Besonderheiten
 Particularidades
 Watch specialties

Autom. s.

Diamètre du mouvement mm
 Werkdurchmesser mm
 Diámetro de la máquina mm
 Diam. of Movement mm

28,5

Hauteur mm
 Höhe mm
 Espesor mm
 Thickness mm

5,8

Balancier
 Unruhe
 Volante
 Balance

non magnétique



Jours - Tage Días - Days	Marches journalières Tägliche Gänge Marchas diarias Daily Rates	Variations Differen- Diferen- Vari-
1.	M ₁ +9	
2.	M ₂ +10	V ₁
3.	M ₃ +5	
4.	M ₄ +4	V ₂
5.	M ₅ +1	
6.	M ₆ +4	V ₃
7.	M ₇ +9	
8.	M ₈ +8	V ₄
9.	M ₉ +9	
10.	M ₁₀ +8	V ₅
11.	M ₁₁ +11	
12.	M ₁₂ +7	V ₆
13.	M ₁₃ +11	
14.	M ₁₄ +11	V ₇
15.	M ₁₅ +10	

Rolex Superlative Chronometer
 N° 10183475
 entirely manufactured by Rolex, Bienne and Geneva, Switzerland. It has been completely examined and regulated and is certified to be in perfect condition.

Guarantee

ROLEX WATCH COMPANY LIMITED
 guarantee the dependable performance of this watch for the period of one year, damage resulting from normal use excepted.
 SELF SERVICE SHOP
 N.A.A.F.I. R/No. 439005
 TANGLIN BARRACKS, SINGAPORE
 Date: 12.65.
 IMPORTANT! THIS GUARANTEE IS VALID ONLY IF DULY COMPLETED AT TIME OF PURCHASE

Vertical

Date de la fin des épreuves: - 8 JU

Résultats - Ergebnisse - Resultados - Summary

Marche journalière moyenne dans les différentes positions
 Mittlerer täglicher Gang in den verschiedenen Lagen
 Marcha diaria media en las distintas posiciones
 Mean daily rate in the different positions

+6,7

Variation moyenne
 Mittlere Gangabweichung
 Diferencia media
 Mean variation

14

Plus grande variation
 Größte Abweichung
 Máxima diferencia
 Maximum variation

Plus grande différence entre la marche journalière moyenne et l'une des marches dans les 5 positions
 Größte Differenz zwischen dem mittleren täglichen Gang und einem der Gänge in den fünf Lagen
 Máxima diferencia entre la marcha diaria media y una de las marchas en las cinco posiciones
 Greatest difference between the mean daily rate and any individual rate
 Variation par degré centigrade
 Gangabweichung pro Grad Celsius
 Diferencia por grado centigrado
 Variation of rate per 1° centigrade

Différence du plat au pendu
 Differenz zwischen liegend und hängend
 Diferencia entre las posiciones horizontal y vertical
 Difference between flat and hanging positions

THIS PAGE
 LOT 79

WE CERTIFY
 that this chronometer has been submitted to a final test in our workshops and that its performance was found to be in accordance with this Official Certificate.

THE ROLEX WATCH COMPANY GENEVA

NOUS CERTIFIONS
 que ce chronomètre a subi un ultime contrôle dans nos ateliers et que sa précision est conforme à ce Bulletin Officiel.

MONTRES ROLEX S.A., GENÈVE

WIR BESTÄTIGEN
 dass dieser Chronometer in unseren Werkstätten nach einer genauen Prüfung zugeordnet wurde, und dass die Präzision diesem offiziellen Gangschein entspricht.

ROLEX-UHREN GENEVE

WATCHES

**AUCTION IN LONDON
16 APRIL 2019
SALE L19070
2.00 PM**

**ALL EXHIBITIONS FREE
AND OPEN TO THE PUBLIC**

Saturday 13 April
12 noon-5 pm

Sunday 14 April
12 noon-5 pm

Monday 15 April
9 am-4.30 pm

Tuesday 16 April
9 am-12 noon

34-35 New Bond Street
London, W1A 2AA
+44 (0)20 7293 5000
sothebys.com

FOLLOW US @SOTHEBYS
#SOTHEBYSWATCHES

275
YEARS

EST. 1744

Sotheby's EST. 1744



Specialists and Auction Enquiries

For further information on lots in this auction please contact any of the specialists listed below.

Sam Hines
Senior Director
Worldwide Head of Watches

Daryn Schnipper
Chairman
International Watches Division

Joanne Lewis
Deputy Director
Head of Department
+44 (0)20 7293 5327
joanne.lewis@sothebys.com

Benoît Colson
Deputy Director
Specialist
Head of Sale
+44 (0)20 7293 5793
benoit.colson@sothebys.com

Kate Lacey
Director
Specialist
+44 (0)20 7293 6106
kate.lacey@sothebys.com

Patrick Lucas
Cataloguer
+44 (0)20 7293 5385
patrick.lucas@sothebys.com

Julien Asso
Junior Cataloguer
+44 (0)20 7293 6531
julien.asso@sothebys.com

SALE NUMBER
L19070 "HILTS"

BIDS DEPARTMENT
+44 (0)20 7293 5283
FAX +44 (0)20 7293 6255
bids.london@sothebys.com

Telephone bid requests should be received 24 hours prior to the sale. This service is offered for lots with a low estimate of £3,000 and above.

PRIVATE CLIENT GROUP
privateclients@sothebys.com

EUROPE
Michael Berger-Sandhofer
m.bergersandhofer@sothebys.com
Alina Davey
Alina.Davey@sothebys.com
Fergus Duff
Fergus.Duff@sothebys.com
Bea Quiralte Planio
Beatriz.Quiralte@sothebys.com

ASIA
Shu Zheng
Shu.Zheng@sothebys.com

INDIA & MENA
Milaap Patel
Milaap.Patel@sothebys.com

RUSSIA & CIS
Irina Kronrod
Irina.Kronrod@sothebys.com
Lilija Sitnika
Lilija.Sitnika@sothebys.com
Maryam Kalo
Maryam.Kalo@sothebys.com

SALE ADMINISTRATOR
Niamh Donnellan
niamh.donnellan@sothebys.com
+44 (0)207 293 6132
FAX +44 (0)207 293 5986

POST SALE SERVICES
Maxwell Maisey
Post Sale Manager
FOR PAYMENT AND
ACCOUNT ENQUIRIES
+44 (0)20 7293 5220
FAX +44 (0)20 7293 5910
ukpostsaleservices@sothebys.com

CONDITION REPORTS
Sotheby's Watches department is pleased to offer to potential purchasers Condition Reports of the lots in this catalogue.

A Condition Report is an opinion describing in more depth the lot with regards to, but not limited to, the general condition and/or other relevant information.

Please Contact:
Benoît Colson
benoit.colson@sothebys.com
+44 (0)20 7293 5793

Kate Lacey
kate.lacey@sothebys.com
+44 (0)20 7293 6106

CATALOGUE PRICE
£25 at the gallery

FOR SUBSCRIPTIONS CALL
+44 (0)20 7293 5000
for UK & Europe
+1 212 606 7000 USA



Contents

3	AUCTION INFORMATION
5	SPECIALISTS AND AUCTION ENQUIRIES
8	WATCHES: LOTS 1–85
73	ABSENTEE BID FORM
75	BUYING AT AUCTION
76	EXPLANATION OF SYMBOLS VAT INFORMATION FOR BUYERS
78	CONDITIONS OF BUSINESS FOR BUYERS
80	WAREHOUSE, STORAGE, COLLECTION INFORMATION
81	AUTHENTICITY GUARANTEE IMPORTANT NOTICES GLOSSARY OF TERMS
83	INTERNATIONAL DEPARTMENTS
84	INDEX SOTHEBY'S EUROPE



1

1

ROLEX

DATE, REFERENCE 1507
YELLOW GOLD WRISTWATCH WITH DATE
AND BRACELET
CIRCA 1964

Dial: silvered

Calibre: cal. 1570 automatic, 26 jewels

Movement number: D24'300

Case: 18ct yellow gold Oyster, screw-down crown
and back

Case number: 1'144'916

Closure: 18ct yellow gold brick bracelet with
Rolex signed integrated folding clasp

Dimensions: 35mm diameter, bracelet
circumference approximately 185mm

Signed: case, dial and movement

Accessories: none

£ 3,000-5,000

€ 3,500-5,800 US\$ 3,950-6,600



2

2

ROLEX

DAY-DATE, REFERENCE 1803
YELLOW GOLD WRISTWATCH WITH DAY AND
DATE
CIRCA 1972

Dial: champagne

Calibre: cal. 1556 automatic, 26 jewels

Movement number: DD'467'831

Case: 18ct yellow gold Oyster, screw-down crown
and back

Case number: 3'462'846

Closure: unsigned brown alligator strap with
unsigned yellow metal pin buckle

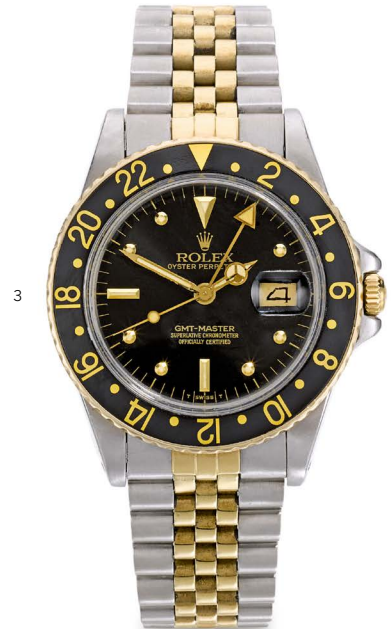
Dimensions: 36mm diameter

Signed: case, dial and movement

Accessories: none

© £ 3,000-5,000

€ 3,500-5,800 US\$ 3,950-6,600



3

3

ROLEX

GMT-MASTER, REFERENCE 16753
STAINLESS STEEL AND YELLOW GOLD
DUAL-TIME WRISTWATCH WITH DATE AND
BRACELET
CIRCA 1982

Dial: black

Calibre: cal. 3075 automatic, 27 jewels

Movement number: 0'773'793

Case: stainless steel and 18ct yellow gold Oyster,
screw-down crown and back

Case number: 7'242'884

Closure: stainless steel and 18ct yellow gold
Rolex Jubilé bracelet with integrated folding clasp

Dimensions: 40mm diameter, bracelet
circumference approximately 200mm

Signed: case, dial and movement

Accessories: invoice dated 4 December 1983,
Rolex user manual, chronometer tag, sales tag
and presentation case

The Rolex GMT Master reference 16750, of which reference 16753 is the two-tone version, was produced between 1980 and 1988. It introduced the newly developed caliber 3075. The quick-set date setting, hacking seconds and a higher beating rate (28'800 vibrations per hour) enhanced the user friendliness of the iconic model, now also water resistant up to 100 meters.

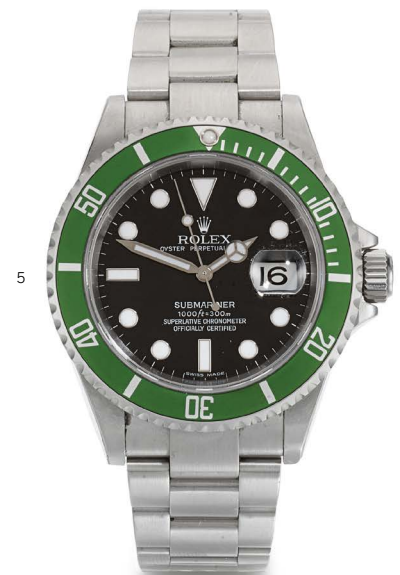
The present lot embodies the 1980s spirit with its two-tone case and jubilee bracelet and a striking glossy black 'Nipple' dial.

£ 4,500-6,000

€ 5,200-7,000 US\$ 5,900-7,900



4



5

4

ROLEX

EXPLORER GRAN VIA 1, 100 ANOS, GRASSY, 50 ANOS, REFERENCE 214270 LIMITED EDITION STAINLESS STEEL WRISTWATCH WITH BRACELET CIRCA 2017

Dial: black

Calibre: cal. 3132 automatic, 31 jewels

Case: stainless steel Oyster, screw-down crown and back

Case number: 10'6Y3'7U2

Closure: stainless steel Rolex Oyster bracelet with integrated folding clasp

Dimensions: 39mm diameter, bracelet circumference approximately 200mm

Signed: case, dial and movement

Accessories: Rolex Guarantee card dated 13 December 2017, international warranty, Rolex user manual, chronometer tag and presentation case

Construction on the Gran Via in Madrid had started in around 1910 and the impressive Gran Via 1 was built between 1916-1917. This street was famous for its plethora of jewellery and watch shops. It was the perfect location for such a renowned establishment like Grassy and in 1953, they opened their flagship store on the famous Gran Via 1 where they can still be found to this day. Grassy introduced several high-end Swiss watch manufacturers to the Spanish market, such as Vacheron Constantin, Jaeger-LeCoultre and Audemars Piguet. In 1967, the flourishing family firm also became an official distributor for Rolex.

In order to celebrate and commemorate this fruitful partnership, Rolex launched this limited edition Explorer in 2017. It is engraved on the case back with the facade of Gran Via 1 proudly showcasing the Rolex sign. The 100 year anniversary of the Gran Via 1 and the 50 year anniversary of the collaboration between Rolex and the Grassy family are also engraved.

While the watch does not bear a special limited edition number, it is believed only 50 pieces were produced. This particular watch is in like-new condition including all documentation and original protection stickers.

£ 4,000-6,000

€ 4,650-7,000 US\$ 5,300-7,900

5

ROLEX

SUBMARINER KERMIT, REFERENCE 16610LV STAINLESS STEEL WRISTWATCH WITH DATE AND BRACELET CIRCA 2006

Dial: black

Calibre: cal. 3135 automatic, 31 jewels

Movement number: 31'291'380

Case: stainless steel Oyster, screw-down crown and back

Case number: Z'260'784

Closure: stainless steel Rolex Oyster bracelet with integrated folding clasp

Dimensions: 40mm diameter, bracelet circumference approximately 195mm

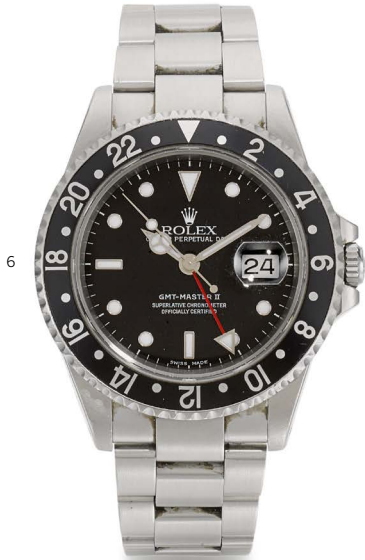
Signed: case, dial and movement

Accessories: Rolex Guarantee dated 24 October 2006, original invoice, Rolex user manual, chronometer tag and presentation case

In 1953, Rolex launched the Submariner which has become the benchmark for diving watches all over the world. After 50 years of success, Rolex released the reference 16610LV in 2003. This special 50th anniversary edition Submariner is the only reference to feature a green aluminium bezel insert. This model, affectionately nicknamed 'Kermit' by collectors due to its green bezel, has become increasingly collectible in recent times.

£ 5,000-8,000

€ 5,800-9,300 US\$ 6,600-10,500



6

6

ROLEX

GMT MASTER II, REFERENCE 16710
STAINLESS STEEL DUAL-TIME WRISTWATCH WITH DATE
AND BRACELET
CIRCA 2000

Dial: black

Calibre: cal. 3185 automatic, 31 jewels

Movement number: 38'554'133

Case: stainless steel Oyster, screw-down crown and back

Case number: P'176'767

Closure: stainless steel Rolex Oyster bracelet with integrated folding clasp

Dimensions: 40mm diameter, bracelet circumference approximately 190mm

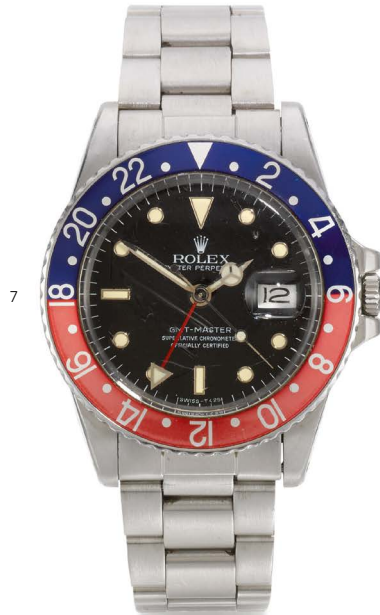
Signed: case, dial and movement

Accessories: Rolex presentation case

In 1989, Rolex launched the GMT Master II reference 16710 as a replacement to the reference 16760. Produced until 2007, the reference 16710 was the last model before the introduction of 116710 which has a thicker case and a cerachrom bezel. Combining slimmer proportions with modern features such as a sapphire crystal and a hacking seconds movement (the highly regarded caliber 3185), the reference 16710 stands as the perfect all-round GMT Master reference.

The present lot was produced in 2000 and its bracelet features solid end-links, a novelty launched the same year.

£ 3,500-5,500 € 4,050-6,400 US\$ 4,600-7,200



7

7

ROLEX

GMT MASTER, REFERENCE 16750
STAINLESS STEEL DUAL-TIME WRISTWATCH WITH DATE
AND BRACELET
CIRCA 1984

Dial: black

Calibre: cal. 3075 automatic, 27 jewels

Movement number: 1'012'008

Case: stainless steel Oyster, screw-down crown and back

Case number: 8'398'170

Closure: stainless steel Rolex Oyster bracelet with integrated folding clasp

Dimensions: 40mm diameter, bracelet circumference approximately 195mm

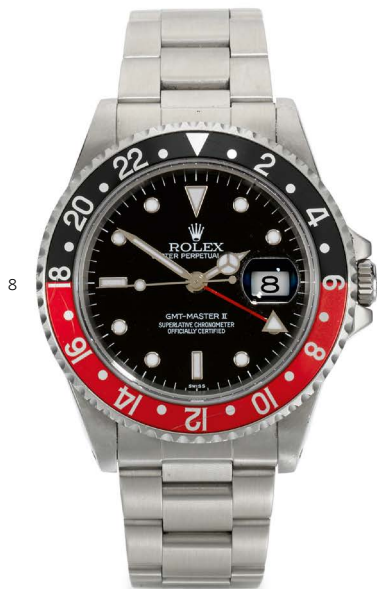
Signed: case, dial and movement

Accessories: Rolex Guarantee dated 13 December 1984

The Rolex GMT Master reference 16750 superseded the iconic ref. 1675 in 1981 and was produced until 1988. The main innovations were prompted by the new caliber 3075 featuring a quick-set date and hacking seconds. The second series 16750, such as the present lot, also introduced a new luxurious touch with the white gold circling to the tritium dial indexes.

The present watch was manufactured in 1984. Its striking glossy and patinated dial is complemented by the Pepsi bezel which has slightly faded, adding to the vintage feel. Blending many interesting features, the present Rolex GMT Master reference 16750 is offered with its original Rolex Guarantee.

£ 5,000-8,000 € 5,800-9,300 US\$ 6,600-10,500



8

8

ROLEX

GMT MASTER II, REFERENCE 16710
STAINLESS STEEL DUAL-TIME WRISTWATCH WITH DATE
AND BRACELET
CIRCA 1998

Dial: black

Calibre: cal. 3185 automatic, 31 jewels

Movement number: 38'210'924

Case: stainless steel Oyster, screw-down crown and back

Case number: U'969'993

Closure: stainless steel Rolex Oyster bracelet with integrated folding clasp

Dimensions: 40mm diameter, bracelet circumference approximately 200mm

Signed: case, dial and movement

Accessories: Rolex Guarantee dated 18 April 1999, Rolex user manual and service booklet with card

Over its 18 years of production, the Rolex GMT Master reference 16710 was fitted with dials with different luminescent materials: Tritium, Luminova and Superluminova.

The present lot is fitted with the correct Luminova dial which had the shortest production period, between 1998-1999 only. It can be identified by the Swiss only signature at 6 o'clock.

£ 5,000-8,000 € 5,800-9,300 US\$ 6,600-10,500



9

9

ROLEX

GMT MASTER II STICK DIAL, REFERENCE 16710
STAINLESS STEEL DUAL-TIME WRISTWATCH WITH DATE
AND BRACELET
CIRCA 2006

Dial: black

Calibre: cal. 3185 automatic, 31 jewels

Movement number: 31'311'573

Case: stainless steel Oyster, screw-down crown and back

Case number: Z'564'610

Closure: stainless steel Rolex Oyster bracelet with integrated folding clasp

Dimensions: 40mm diameter, bracelet circumference approximately 195mm

Signed: case, dial and movement

Accessories: Rolex Guarantee card dated 15 September 2007, Rolex user manual, chronometer booklet, chronometer tag and presentation case

The GMT-Master II reference 16710 stayed in production until 2007, making this watch one of the last ones produced. During this period this reference went through substantial changes, such as changing from Tritium dials to Super Luminova dials and removing the pin-holes from the case.

This watch features the so-called and sought-after stick dial. This dial is most easily distinguishable through the way the II has been printed. The usual Roman 'II' of GMT Master II is replaced by two 'sticks', hence the nickname.

£ 6,000-9,000 € 7,000-10,400 US\$ 7,900-11,800

GMT-MASTER II
SUPERLATIVE CHRONOMETER
OFFICIALLY CERTIFIED



10

10

ROLEX

DATEJUST, REFERENCE 1601
 YELLOW GOLD WRISTWATCH WITH DATE
 CIRCA 1962

Dial: champagne
Calibre: cal. 1560 automatic, 26 jewels
Movement number: D80'694
Case: 18ct yellow gold Oyster, screw-down crown and back
Case number: 780'025
Closure: Rolex calfskin strap with gold plated Rolex pin buckle
Dimensions: 36mm diameter
Signed: case, dial and movement
Accessories: Rolex Guarantee dated 19 January 1963, chronometer certification document, original invoice, one booklet and presentation case

This piece is offered on behalf of the family of the original owner. The watch still has a strong case, well preserved pie-pan dial and comes with a most impressive complete set.

£ 2,500-3,500
 € 2,900-4,050 US\$ 3,300-4,600

11



11

ROLEX

DAYTONA FOUR LINES, REFERENCE 16528
 YELLOW GOLD CHRONOGRAPH
 WRISTWATCH WITH BRACELET
 CIRCA 1988

Dial: black
Calibre: cal. 4030 automatic, 31 jewels
Movement number: 13'209
Case: 18ct yellow gold Oyster, screw-down crown, pushers and back
Case number: R'983'961
Closure: 18ct yellow gold Rolex Oyster bracelet with integrated folding clasp
Dimensions: 40mm diameter, bracelet circumference approximately 190mm
Signed: case, dial and movement
Accessories: none

Between 1988 and 2000, Rolex produced the first automatic version of the Daytona, the reference 16520. The 40mm sports chronograph relied on a Zenith El Primero caliber, extensively modified by Rolex and named the cal. 4030. Over the course of its 12-year life, the reference 16520 was produced in 5 different series and available in stainless steel, yellow gold, white gold as well as a bi-colour version.

The present 16528 'R series' is from late 1988. This lot combines two most attractive and collectible features. Firstly, it is fitted with its original first series bezel calibrated to 200 units. Furthermore, it bears an early and correct second series 4 lines dial with inverted 6 to the hour register.

In addition, this early reference 16528 is mounted on a yellow gold Oyster bracelet bearing the early clasp with no safety lock. The case displays some oxidation marks around the upper chronograph pusher, combining dark blue hues with the warm tone of the yellow gold. This rare early Zenith Daytona is a great piece for any Rolex collection.

£ 13,000-18,000
 € 15,000-20,800 US\$ 17,000-23,600



ROLEX

DAY-DATE PEARLMASTER, REFERENCE 18948
 YELLOW GOLD DIAMOND-SET WRISTWATCH WITH LAPIS
 LAZULI DIAL, DAY, DATE AND BRACELET
 CIRCA 2006

- Dial:** lapis lazuli
- Calibre:** cal. 3155 automatic, 31 jewels
- Movement number:** 31'532'435
- Case:** 18ct yellow gold Oyster, diamond-set bezel, screw-down crown and back
- Case number:** Z'505'174
- Closure:** 18ct yellow gold Rolex Pearlmaster bracelet with integrated folding clasp
- Dimensions:** 39mm diameter, bracelet circumference approximately 195mm
- Signed:** case, dial and movement
- Accessories:** Rolex Guarantee dated 22 June 2007 and presentation case

The Pearlmaster line was launched in 1992 as the new high-end collection of the brand.

The present lot is a most attractive example of the Pearlmaster.

The 39mm heavy yellow gold case is fitted on the bracelet especially designed for the Pearlmaster line. It is furthermore decorated with diamonds to its bezel. The precious case is perfectly complemented by a rare and distinctive diamond-set lapis lazuli dial.

This impressive piece also comes with its original Guarantee and large presentation case.

£ 16,000-24,000 € 18,500-27,700 US\$ 21,000-31,400



de cette montre pour la durée de deux ans à
 antie ne couvre pas l'usure normale, la perte, le vol
 on inappropriée. Toute adjonction ou substitution
 R ROLEX entraîne la fin de la garantie.
 ntre a été vendue au consommateur par le
 ndiqué sur le présent certificat, (2) ce
 istributeur Agréé ROLEX au moment de
 la montre soit à un Distributeur Agréé
 X figurant au verso. Toute intervention
 nt manufacturé en Suisse.

PERPETUAL a subi avec
 ions et trois températures
 ntrôle Officiel Suisse des
 it de porter le titre de
 ratoires ROLEX afin
 ge, titre attesté par
 cadran et par le

Nom et ad
 MR.

Date de l'achat: 22/06/07
 This guarantee does not affect
 your statutory rights.

controls
 to water line
 shadow
 NO SAE
 P 01625 416330
 www.cottilla.com



13



13

ROLEX

DATEJUST PEARLMASTER TRIDOR,
REFERENCE 69298
YELLOW, WHITE AND PINK GOLD DIAMOND-
SET WRISTWATCH WITH DINOSAUR EGG
DIAL, DATE AND BRACELET
CIRCA 1996

Dial: dinosaur egg

Calibre: cal. 2135 automatic, 29 jewels

Movement number: 3'735'623

Case: 18ct yellow gold Oyster, diamond-set bezel,
screw-down crown and back

Case number: T'293'221

Closure: 18ct yellow, white and pink gold Rolex
Pearlmaster bracelet with integrated folding clasp

Dimensions: 29mm diameter, bracelet
circumference approximately 160mm

Signed: case, dial and movement

Accessories: one incomplete additional bracelet
link and presentation case with key

The present Pearlmaster Tridor is made from
yellow, white and pink gold and has a diamond-
set bezel. The most striking feature of this 29mm
luxurious piece is the extremely rare dinosaur
egg dial, further-fitted with diamond-set indexes
circled in yellow gold and yellow gold hands.

£ 6,000-9,000

€ 7,000-10,400 US\$ 7,900-11,800

14



14

ULYSSE NARDIN

ULYSSE 1, REFERENCE 276-88
PINK GOLD DIAMOND-SET WRISTWATCH
WITH DATE AND POWER RESERVE
CIRCA 2011

Dial: silvered, off-white

Calibre: cal. UN27 automatic, 38 jewels

Movement number: 03'846

Case: 18ct pink gold, diamond-set bezel, back
secured by 6 screws

Case number: 924

Closure: brown Ulysse Nardin alligator strap with
18ct pink gold Ulysse Nardin pin buckle

Dimensions: 40mm diameter

Signed: case, dial and movement

Accessories: invoice dated 15 April 2011,
International Guarantee, Ulysse Nardin user
manual and presentation case

• £ 4,000-6,000

€ 4,650-7,000 US\$ 5,300-7,900

15



15

CHOPARD, LUC

WHITE GOLD DIAMOND-SET BRACELET
WATCH WITH OPAL DIAL
CIRCA 1970

Dial: opal

Calibre: manual winding, 17 jewels

Case: 18ct white gold, diamond-set bezel, snap-
on back

Closure: integrated 18ct white gold bracelet with
clasp

Dimensions: 27mm diameter, bracelet
circumference approximately 140mm

Signed: case, dial and movement

Accessories: none

In addition to being elegantly diamond-set, the
present white gold Chopard bracelet watch
is fitted with a most attractive opal dial which
changes colour depending on the light.

£ 3,000-5,000

€ 3,500-5,800 US\$ 3,950-6,600

PROPERTY OF THE BALLYEDMOND COLLECTION

LOTS 16-27

Sotheby's is extremely pleased to offer this incredible private collection of lady's watches. It comprises among others, a most attractive selection of vintage Piaget watches that are the finest examples of this iconic style.

The period between the late 1960's and early 1970's presented watch

brands with an exciting opportunity to experiment with avant-garde, ground-breaking new designs for both men and women. The fashion for gold bracelet watches with colourful hardstone dials had burst onto the scene and Piaget was at the forefront of these designs, launching their 21st Century

Collection in 1969, at the height of the firm's finest era of jewellery making. Produced for only five years, the collection was inspired by the period's nonconformist style, playing with texture, colour, and design and today these iconic pieces are considered an important part of Piaget's very DNA.



16

PIAGET

REFERENCE 7315 A 68
YELLOW GOLD, DIAMOND-SET BRACELET
WATCH WITH DIAMOND-SET ONYX DIAL
MADE IN 1978

Dial: onyx, diamond-set

Calibre: cal. 7P3 quartz, 4 jewels

Movement number: 14'592

Case: 18ct yellow gold, diamond-set bezel, back secured by 4 screws

Case number: 294'691

Closure: integrated 18ct yellow gold bracelet with clasp

Dimensions: 24.5mm width x 27.5mm length, bracelet circumference approximately 170 mm

Signed: case, dial, movement and bracelet

Accessories: none

£ 1,500-2,500

€ 1,750-2,900 US\$ 2,000-3,300

17

MERANO

YELLOW GOLD SEED PEARL-SET BRACELET
WATCH WITH MOTHER-OF-PEARL DIAL
CIRCA 1960

Dial: mother-of-pearl

Calibre: manual winding, 17 jewels

Case: 14ct yellow gold, snap-on back

Case number: 1'119'027

Closure: 14ct yellow gold cuff bracelet with seed pearl-set clasp

Dimensions: 27mm wide, dial 18mm diameter, bracelet circumference approximately 210mm

Signed: case, dial and movement

Accessories: none

£ 500-700

€ 600-850 US\$ 700-950

18

MONTRES GENÈVE

WHITE GOLD DIAMOND-SET BRACELET
WATCH
CIRCA 1975

Dial: diamond-set

Calibre: manual winding, 17 jewels

Case: 18ct white gold and diamond-set, snap-on back

Case number: R-K

Closure: integrated 18ct white gold bangle with diamond-set clasp

Dimensions: 48mm width x 31mm length, bracelet circumference approximately 170mm

Signed: movement

Accessories: none

£ 1,000-1,500

€ 1,200-1,750 US\$ 1,350-2,000



19



20



21

19

PIAGET

REFERENCE 9330 B 43
YELLOW GOLD DIAMOND-SET CUFF WATCH
WITH LAPIS LAZULI DIAL
MADE IN 1971

Dial: lapis lazuli

Calibre: cal. 9P2 manual winding, 18 jewels

Case: 18ct yellow gold, diamond-set bezel, back secured by 2 screws

Case number: 198'508

Closure: 18ct yellow gold cuff bracelet with clasp

Dimensions: 32mm wide, 28mm width x 25mm length, bracelet circumference approximately 195mm

Signed: case, dial and movement

Accessories: none

£ 3,000-5,000

€ 3,500-5,800 US\$ 3,950-6,600

20

PIAGET

REFERENCE 9852 D 65
YELLOW GOLD BRACELET WATCH WITH
LAPIS LAZULI DIAL
MADE IN 1971

Dial: lapis lazuli

Calibre: manual winding, 18 jewels

Case: 18ct yellow gold, back secured by 4 screws

Case number: 197'530

Closure: integrated 18ct yellow gold bracelet with clasp

Dimensions: 32mm width x 25mm length, bracelet circumference approximately 185mm

Signed: case, dial, movement and bracelet

Accessories: none

£ 4,000-6,000

€ 4,650-7,000 US\$ 5,300-7,900

21

PIAGET

RETAILED BY CARTIER, REFERENCE 9131 C 210

YELLOW GOLD BRACELET WATCH WITH
LAPIS LAZULI DIAL
MADE IN 1972

Dial: lapis lazuli

Calibre: manual winding, 18 jewels

Case: 18ct yellow gold, back secured by 4 screws

Case number: 215'798

Closure: integrated 18ct yellow gold bracelet with locking clasp

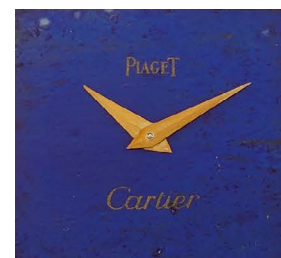
Dimensions: 25mm width x 24mm length, bracelet circumference approximately 185mm

Signed: case, dial and movement

Accessories: none

£ 3,000-5,000

€ 3,500-5,800 US\$ 3,950-6,600





22

22

PIAGET

REFERENCE 9060 D 78
 YELLOW GOLD CUFF WATCH WITH LAPIS
 LAZULI DIAL
 MADE IN 1969

Dial: lapis lazuli
Calibre: manual winding, 18 jewels
Case: 18ct yellow gold, back secured by 4 screws
Case number: 174'445
Closure: integrated 18ct yellow gold cuff bracelet
 with clasp
Dimensions: 37mm width x 23mm length,
 bracelet circumference approximately 170mm
Signed: case, dial, movement and bracelet
Accessories: none

£ 5,000-7,000
 € 5,800-8,100 US\$ 6,600-9,200



23

23

PIAGET

REFERENCE 9537 N 20
 YELLOW GOLD SAPPHIRE AND DIAMOND-
 SET CUFF WATCH WITH OPAL DIAL
 MADE IN 1972

Dial: opal
Calibre: manual winding, 18 jewels
Case: 18ct yellow gold, sapphire and diamond-set
 bezel, back secured by 4 screws
Case number: 208'178
Closure: 18ct yellow gold woven cuff bracelet with
 clasp
Dimensions: 40mm width x 38.5mm length,
 bracelet circumference approximately 185mm
Signed: case, dial, movement and bracelet
Accessories: none

£ 8,000-12,000
 € 9,300-13,900 US\$ 10,500-15,700



24

PIAGET

REFERENCE 9190 A R6
 YELLOW AND WHITE GOLD DIAMOND-SET BRACELET
 WATCH WITH BLOODSTONE DIAL
 MADE IN 1970

Dial: bloodstone
Calibre: cal. 9P manual winding, 18 jewels
Case: 18ct yellow gold, 18ct white gold and diamond-set bezel, back secured by 2 screws
Case number: 175'044
Closure: integrated 18ct yellow gold bracelet with clasp
Dimensions: 25mm diameter, bracelet circumference approximately 195mm
Signed: case, dial, movement and bracelet
Accessories: none

£ 2,000-3,000 € 2,350-3,500 US\$ 2,650-3,950

25

PIAGET

REFERENCE 9865 D 97
 YELLOW GOLD BRACELET WATCH WITH MALACHITE
 DIAL
 MADE IN 1971

Dial: malachite
Calibre: cal. 9P manual winding, 18 jewels
Movement number: 716'074
Case: 18ct yellow gold, back secured by 2 screws
Case number: 202'290
Closure: integrated 18ct yellow gold bracelet with clasp
Dimensions: 26mm width x 32mm length, bracelet circumference approximately 195mm
Signed: case, dial, movement and bracelet
Accessories: none

£ 4,000-6,000 € 4,650-7,000 US\$ 5,300-7,900



26

27

26

PIAGET

REFERENCE 924 G 13
 YELLOW GOLD AND MALACHITE CUFF WATCH WITH
 MALACHITE DIAL
 MADE IN 1973

Dial: malachite
Calibre: cal. 9P1 manual winding, 18 jewels
Movement number: 7'311'435
Case: 18ct yellow gold, back secured by 2 screws
Case number: 230'674
Closure: integrated 18ct yellow gold and malachite circular
 linked bracelet with clasp
Dimensions: 47mm wide, dial 24mm diameter, bracelet
 circumference approximately 185mm
Signed: case, dial, movement and bracelet
Accessories: none

Piaget's 21st Century Collection was produced for only five years from 1969. During this short period, an array of exciting playful textures, designs and coloured dials were used including coral, malachite and lapis lazuli.

The effect in this lot is both impressive and attractive. The malachite pieces look like precious gemstones and create a rhythm that is perfectly offset by the sculpted yellow gold, high raised links. It is not only a watch, it is also a beautiful piece of avant-garde jewellery.

£ 10,000-20,000 € 11,600-23,100 US\$ 13,100-26,200

27

PIAGET

REFERENCE 9850 D 72
 OVAL YELLOW GOLD CUFF WATCH WITH CORAL DIAL
 MADE IN 1970

Dial: coral
Calibre: cal. 9P manual winding, 18 jewels
Movement number: 703'993
Case: 18ct yellow gold, textured bezel, back secured by 4 screws
Case number: 181'881
Closure: 18ct yellow gold cuff bracelet with clasp
Dimensions: 35mm width x 25mm length, bracelet
 circumference approximately 190mm
Signed: case, dial, movement and bracelet
Accessories: none

This superb lot captures the extravagant essence of the 21st century collection with an extremely fine and unusual articulated bracelet with the links in a similar shape to the case, making the coral dial look as though it is floating.

£ 10,000-20,000 € 11,600-23,100 US\$ 13,100-26,200

JEAN ROUSSEAU

SILVER MEMENTO MORI SKULL FORM WATCH
CIRCA 1650

Dial: silver, Roman chapter, foliate engraved centre

Movement: gilt full plate verge, cut and pierced foliate engraved balance cock secured by a screw, flat steel balance, worm and wheel set up, fusée and gut line

Case: silver in the detailed form of a skull

Dimensions: 34mm width x 41mm length x 34mm height, dial 26mm diameter

Signed: movement

Accessories: none

Jean Rousseau (1606-1684) was an important and well known watchmaker and Master of the Clockmakers' Company of Geneva. He was particularly known for making form watches, such as the present and following lot in this sale.

The sumptuary orders introduced by Calvin in the late 16th century expressly forbid the manufacture of crosses, chalices or other 'idolatory' instruments of worship. Some decades later, and perhaps even in reaction to this period saw a demand for form watches such as this. Although the human skull in miniature as a symbol of death had a long history dating back to the medieval period. This skull is cast with detailed indentations and engravings to the hinged outer and, as was often the case with these types of watches, also has subtle religious motifs on the dial.

With thanks to David Thompson for the help with this footnote

For a similar example see, David Thompson, 'Watches at the British Museum, P.46

£ 10,000-15,000 € 11,600-17,300 US\$ 13,100-19,700



JEAN ROUSSEAU

ROCK CRYSTAL AND GILT METAL CRUCIFIX FORM
WATCH
CIRCA 1630

Dial: silver, engraved Roman chapter and engraved town scene to the centre, gilt cruciform dial plate engraved with masks and putti, the bottom part with pious praying figure at the foot of the cross, blued steel hand

Movement: partially foliate engraved gilt-brass cruciform plate, decorative hybrid pillars, chain fusée, verge escapement, three-arm steel balance, pierced and engraved cock secured by a screw, offset worm-and-wheel set-up with blued steel brackets

Case: gilt brass-mounted rock crystal hinged at the top, plain pendant and ring, small lower finial

Dimensions: 34mm width x 52mm length x 20.5mm height, dial 26mm diameter

Signed: movement

Accessories: none

This watch is preserved in wonderful condition for a piece of its age. Very few examples such as this have appeared at auction to date.

For a note on Jean Rousseau, please refer to lot 28.

£ 15,000-25,000 € 17,300-28,800 US\$ 19,700-32,700



30



30

THOMAS TOMPION

SILVER PAIR-CASED VERGE WATCH
NO. 4372
CIRCA 1710

Dial: silver champlévé, Roman numerals and Arabic outer minute chapter, steel beetle and poker hands

Movement: gilt full plate fusée verge, winged balance cock pierced and engraved with foliate scrolls and mask, large Egyptian pillars, silvered regulation, steel three-arm balance

Movement number: 4372

Case: stamped WS for William Sherwood, outer plain

Case number: 4372

Dimensions: 56mm diameter

Signed: dial and movement

Accessories: none

Thomas Tompion, one of the most celebrated English watchmakers, was born at Ickwell Green in Bedfordshire in 1639. He originally trained as a blacksmith, eventually transitioning to clock and watchmaking. He became a celebrated and prolific maker, with numerous noble patrons, but the fact that so many of his watches survive is a testament to the undiminished quality of his work.

PROVENANCE

The watch was sold at Christie's Salerooms, London, Wednesday April 19th, 1978 for a hammer price of £85.00 This watch is listed in Jeremy Evans', 'The Dial and Three Crowns', 'P. 94

£ 3,000-4,000 € 3,500-4,650 US\$ 3,950-5,300



31



31

DAVID KEYS

YELLOW GOLD KEYLESS HUNTING-CASED MINUTE REPEATING CHRONOGRAPH WATCH
NO. 16649
CIRCA 1885

Dial: enamel regulator style, Roman numerals, outer chronograph seconds, subsidiary seconds at 6, 60 minute recording at 12

Movement: gilt 3/4 plate keyless wind English lever, diamond end-stone

Movement number: 16649

Case: 18ct gold hunter, engraved monogram and coat of arms front and back, slide repeat and chronograph button to the band

Case number: 16649

Dimensions: 57mm diameter

Signed: movement

Accessories: none

There are two addresses for David Keys listed in London, one on the Strand around 1881 and one on Picadilly between 1863-1874 listed as, 'Watch and chronometer maker to the Admiralty' and interestingly, as whole saler. They would likely have supplied good quality watch movements elsewhere.

£ 2,500-3,500 € 2,900-4,050 US\$ 3,300-4,600





Anatoly Nikolaievich Demidov, 1st Prince of San Donato

32

BREGUET ET FILS

YELLOW GOLD MONTRE À 1 AIGUILLE WATCH
 ORIGINALLY SOLD TO PRINCE DEMIDOF OF RUSSIA
 NO. 3027
 CIRCA 1815

Dial: white enamel, blued steel single hand, secret signature and number below 12, Arabic numerals and five minute divisions, signed beneath 6 *Breguet et Fils*

Movement: gilt ruby cylinder, central going barrel, gilt three-arm balance with parachute suspension and compensation curb

Movement number: 3027

Case: yellow gold case and bow by Jean Louis Joly and with Harris gold marks, applied engraved cyrillic monogram and Russian noble crown

Case number: 3027

Dimensions: 62mm diameter

Signed: case, dial and movement

Accessories: fitted associated red box and copy of the Extract from the Archives

According to the Extract from the Archives produced in 1993, this watch was originally sold in 1817 to *Monsieur Demidoff*, although the entry in the ledger is likely to have just said *Demidof*.

Breguet worked hard to expand his business in foreign markets and initially Breguet enjoyed great commercial success with his new flamboyant salesman Moreau in Russia. However, by 1810, relations between Napoleon and the Russian Tsar had entirely fragmented and French goods were prohibited from even entering Russia. Moreau liquidated whatever business he had and abandoned Russia for France, leaving all Breguet's equipment and ledgers behind. Despite this, thanks in part to his reputation and his diplomatic contacts, Breguet's business recovered.

It has been found in these Russian ledgers that the Demidof family were one of the first and most prominent clients of Breguet in Russia and they remained so for many years. Prince Demidof, a well-known Francophile and passionate patron of the arts, bought no fewer than 16 watches from Breguet between 1817 and 1821, so it is very probable that this was one of his first purchases. In fact, we know that on 2nd November 1830, he bought the Breguet *Sympathique* No.430, together with its companion watch No. 2787, for a combined price of 31,160 francs, making them some of Breguet's most expensive pieces he ever made.

Furthermore, this watch might also once have been described as a 'Souscription watch' but instead is described as a 'Montre a 1 Aiguille.' The term 'Souscription' refers to the fact that part payment was required in advance. This system was used by Breguet to refinance his business after his return from Switzerland. Possibly, by 1817 he was successful enough not to need to ask for a deposit so subsequent watches were referred to simply as having one hand. In any case, the wealthy Prince Demidof would certainly not have needed to pay an advance to secure his watch.

With sincere thanks to Andrew Crisford for his help with the research on this watch.

LITERATURE

Also see, '*Breguet, watchmakers since 1776*', Emmanuel Breguet and Edited by Emmanuel Ducamp, Pages 209-215, chapter entitled, '*Breguet's international network*'

£ 12,000-18,000

€ 13,900-20,800 US\$ 15,700-23,600



33

33

F. BERG

PINK GOLD HUNTING-CASED KEYLESS MINUTE REPEATING PERPETUAL CALENDAR CHRONOGRAPH WATCH WITH MOON-PHASES

NO. 90888

CIRCA 1880

Dial: white enamel, subsidiary dials for day, date, perpetual calendar indication and moon-phases

Movement: manual winding jewelled Swiss lever, 2 steel hammers striking on a gong

Case: 18ct pink gold

Case Number: 90888

Dimensions: 58mm diameter

Signed: cuvette

Accessories: none

£ 4,000-6,000 € 4,650-7,000 US\$ 5,300-7,900



34

34

PROPERTY OF THE FAMILY OF THE ORIGINAL OWNER

THOMAS ENGEL

CARRIAGE TIME PIECE WITH PERPETUAL CALENDAR, MOON-PHASES AND EQUATION OF TIME

NO.001

CIRCA 1980

Dial: silvered, engine-turned centre, power reserve indication for 8 days, apertures for day, date and month, moon-phase sector with equation hand, centre seconds, engine-turned gilt surround with silvered plaque No.001

Movement: skeletonised, spring barrel and club tooth lever escapement, bi-metallic compensation balance, micrometer-regulation

Case: arched case with chain handle and gilt feet

Case number: 001

Dimensions: 15cm height, dial 114.3mm diameter (4.5 inches)

Signed: dial

Accessories: gilt tooled green Morocco Breguet leather travelling case

Professor Thomas Engel was already an internationally known and award winning scientist, particularly in the field of polymers and organic chemistry. Having collected watches for many years, he decided to try his hands at making and developing complicated watches, with a particular passionate interest in the life and works of Abraham-Louis Breguet, on whom he wrote a book.

According to the family, there were so few examples of Breguet travelling clocks available on the market, that they decided to make their own. When they showed the finished clock to a dealer friend of theirs in Zurich, he was delighted to find that the original Breguet case he had fitted the clock perfectly, and so it remains with the piece today.

£ 5,000-10,000 € 5,800-11,600 US\$ 6,600-13,100

PROPERTY OF THE FAMILY OF THE ORIGINAL OWNER

THOMAS ENGELPINK GOLD KEYLESS OPEN-FACED POCKET
CHRONOMETER WITH TOURBILLON, MOON-PHASES AND
POWER RESERVE INDICATION

NO. 000

CIRCA 1998

Dial: silvered, engine-turned with Roman hour chapter and Arabic five minute divisions, moon-phases at 10, power reserve indication between 2 and 3, subsidiary seconds between 6 and 7, blued steel hands**Movement:** cal. 12 manual winding tourbillon lever, 19 jewels**Movement number:** 12**Case:** 18ct pink gold, engine-turned screw-down back, winding through the bow**Case number:** 000**Dimensions:** 56.5mm diameter**Signed:** case, dial and movement**Accessories:** numbered Thomas Engel Certificate, spare mainspring barrel and hands and fitted presentation case

The influence of Breguet is very clearly seen in the dial configuration of this watch. Another interesting element to note is that the tourbillon carriage in this watch is also likely to have been manufactured by the celebrated watchmaker Richard Daners, who also made unique and important commissions for Gubelin, and who in 1997 received the prestigious Prix Gaïa, only presented to those who have advanced horology and its importance throughout their work.

This watch, numbered 000 is the very first of its kind. It was originally gifted to a member of Engel's family.

£ 15,000-25,000 € 17,300-28,800 US\$ 19,700-32,700



PROPERTY OF A GENTLEMAN



36

JOHN ARNOLD & SON, LONDON

SILVER CONSULAR-CASED POCKET CHRONOMETER
WITH ARNOLD SPRING DETENT AND STEEL
ESCAPEMENT

NO. 146

CIRCA 1796

Dial: white enamel, signed *JRA*, Roman numerals, outer five minute divisions with Arabic numerals, large subsidiary seconds

Movement: gilt full plate fusée, 'Arnold type' spring detent escapement, foliate engraved balance cock, Z balance and gold helical balance spring, *modified* temperature compensation steel escapement, diamond end-stone, signed *John Arnold [& Son removed]* London, Inv. Et Fec No 146

Movement number: 146

Case: plain silver polished consular case with later stem and bow, the back with fixed cover with winding aperture, inner and outer cases London hallmarked for 1796, stamped with maker's mark *TH* for *Thomas Hardy*

Dimensions: 55.5mm diameter

Signed: dial signed *JRA*, movement signed *John Arnold [& Son removed]*

Accessories: none

John Roger Arnold apprenticed to his father John Arnold, the great chronometer maker and inventor, in 1783 at the age of 14. At the age of 18 and before the completion of his apprenticeship, his father took him on as a partner. John

Arnold then sent his son to train as a watchmaker in Paris under his esteemed friend and colleague, Abraham-Louis Breguet. John Roger returned from Paris a year later and, in June 1796, was made a Freeman of the Clockmakers' Company, and became Master of the Clockmakers' Company in 1817. Together, father and son formed the company Arnold & Son, which upon John Roger Arnold's death in 1843, was bought by Charles Frodsham.

The immediately preceding Arnold pocket chronometer to this one, No.145, has the same signatures on both the dial and movement. The updating of the temperature compensation accounts for the modified signature on both No. 145 and No.146.

For an illustration of the John Roger Arnold No.145 with the same signature, as well as information on the transfer of the business between father and son, see Hans Staeger, "100 Years Of Precision Timekeepers," pp. 170, 189 and figs. 1-3. Staeger writes that, 'according to an existing record written by John Roger Arnold and sent to Breguet in Paris 1796, that his father John Arnold, had transferred the running of the business to his son John Roger Arnold. However, according to existing documents, the transfer took place on the 10th May 1799.' During this three-year period between the letter to Breguet and the transfer of the business, dials of marine chronometers and pocket watches have been found with the 'conjoined' J.A.R initials.

With thanks to Rory McEvoy and Jonathan Betts for their help with this footnote.

£ 7,500-15,000 € 8,700-17,300 US\$ 9,900-19,700



37

37

S. SMITH & SON, LONDON

SILVER OPEN-FACED KEYLESS WIND WATCH WITH KARUSSELL MOVEMENT

NO. 11326

MADE IN 1901

Dial: white enamel, Roman numerals and outer minute chapter, subsidiary seconds, blued steel hands

Movement: gilt 3/4 plate Karussell, cut bimetallic compensation balance, lever escapement, blued steel over-coil hair spring, diamond end-stone

Movement number: 11326

Case: plain silver hinged case with London hallmark for 1901, and stamped SS possibly for Simon Silverstone, Clerkenwell

Case number: 11326

Dimensions: 58mm diameter

Signed: dial and movement

Accessories: none

S. Smith and Sons are listed at the Strand, London between 1875-1918 and were one of the most prolific suppliers of high quality precision timepieces at the time, supplying watches to both the Admiralty and the Royal Geographical Society.

£ 15,000-24,000 € 17,300-27,700 US\$ 19,700-31,400



38

38

CHARLES FRODSHAM, LONDON

YELLOW GOLD KEYLESS WIND POCKET CHRONOMETER WITH SPRING DETENT ESCAPEMENT AND POWER RESERVE INDICATION MADE FOR THE INDIAN MARKET

NO. 04794

MADE IN 1875

Dial: white enamel, Roman numerals, power reserve indication at 12 and subsidiary seconds at 6

Movement: 3/4 plate, keyless wind fusée, spring detent escapement, split bi-metallic balance, blued steel helical spring

Movement number: 04794

Case: 18ct yellow gold engine-turned hunter case stamped GAP (for George Augustus Potter, Clerkenwell), the later cuvette stamped AF but lacking date letter, painted with polychrome enamel portrait of an Indian Prince, outer case with London hallmark for 1875

Dimensions: 56.2mm diameter

Signed: dial and movement

Accessories: none

Watches made for the Indian market, known as 'Maharaja watches,' frequently made use of photographs sent from Indian dignitaries so that artists could render the portraits in enamel. These subjects presented a particular challenge to enamellers, as the portraits were done using often-blurry photographs sent from overseas as the basis, rather than seeing the subject first-hand or working from a clear likeness. The portrait included on this watch is a testament to the skill of the artists at work.

For further discussion of 'Maharaja watches' and Swiss watch trade in India, see Jaquet, E., & Chapuis, A., *Technique and History of the Swiss Watch*, pp. 100 and 128-9, and illustrations on pl. 133.

£ 12,000-19,000 € 13,900-21,900 US\$ 15,700-24,900



38



King George III in coronation robes

JUSTIN VULLIAMY

YELLOW GOLD ENAMEL AND DIAMOND-SET DUMB QUARTER REPEATING CYLINDER WATCH

CODE OMC
CIRCA 1768

Dial: white enamel, Roman numerals and outer Arabic five minute chapter ring, diamond-set skeletonised cross-over style hands

Movement: fusée, cylinder escapement, plain steel 3-arm balance, diamond end-stone, balance cock engraved with mask and foliate scrolls, 2 hammers striking on the dust cap

Case: 18ct yellow gold, restored translucent blue enamel back with gold stars over engine-turned ground, decorative enamel blue and white enamel bands, applied diamond-set Royal Coronet and Cypher, "GR" on reverse, plunge repeat through the bow

Dimensions: 50.5mm diameter

Signed: movement signed *Justin Vulliamy*, datecode OMC

Accessories: none

Justin Vulliamy was the patriarch of three generations of watch and clockmakers. He left Switzerland and moved to England becoming the partner of Benjamin Gray, whose daughter he married. Following his father-in-law's death, Vulliamy continued to employ Gray's coded numbering system, which is still not fully understood. It is known that the coding system moved from 3 letters to four letters around 1812.

This is one of a small number of watches in large cases covered in blue enamel and lavishly set with diamonds, which bear the crowned cypher of King George III (r.1760-1820). There are two

currently in the British Royal Collection [Note 1], and two others which sound very similar were exhibited in a 'Royal Treasures' loan exhibition in 1937 [Note 2]. The cypher does not indicate that such watches were for the King's own use, but rather that they were royal gifts to friends and close personal acquaintances within the Court circle. For example, one of the two now in the Royal Collection is reputed to have been given by the King to the Earl of Courtown.

Like the present watch, the two watches in the Royal Collection originally contained movements by (François) Justin Vulliamy (1712-1797). The movement in the Courtown watch is now missing, but was almost certainly *Justin Vulliamy ama*, while the other movement is signed *Justin Vulliamy rzz*. It is interesting to note that these code numbers and that of the present watch indicate that the movements were made several years apart - c.1764 for *ama*, c.1768 for *omc*, and as late as c.1789 for *rzz*.

This suggests that a number of these distinctive cases may have been made early in the reign of George III, and movements were subsequently inserted as required, and resized when necessary, as with the present watch. This was not an uncommon practice with particularly prized cases, and the surviving Vulliamy business papers record several such instances, as well as the reverse process of recasing earlier movements, though unfortunately they do not cover these royal watches.

The immigrant Swiss watchmaker Justin Vulliamy had previously been in business with his father-in-law Benjamin Gray, who had been King's Watchmaker to George II from 1742 until that King died in 1760. On Gray's own death in 1764, Vulliamy took full control of the firm, and although

he himself never obtained the Royal Warrant as King's Watchmaker, probably because he was not naturalised and so remained ineligible for this Civil List post, he certainly maintained close links with the horologically-minded new king, George III, and the Royal Household. Indeed, he received a personal appointment as clockmaker to Queen Charlotte, while his son and partner Benjamin Vulliamy (1747-1811) received a warrant as King's Clockmaker in 1772, and was in due course to be succeeded in this post by his own son Benjamin Lewis Vulliamy (1780-1854), who retained the Royal Warrant under several sovereigns until his death in 1854.

With sincere thanks to Roger Smith for his kind assistance with the detailed research on this watch.

1) Royal Collection, Inventory numbers RCIN 43796-7 and RCIN 65350. They can be seen on the website of the Royal Collection Trust.

2) The watches exhibited in 1937 are noted in Cedric Jagger, *Royal Clocks* (London 1983), p. 307, nos. 501 and 513B. An enamel and diamond watch in the same exhibition, no. 258H, which was apparently given by George III to Lord Harcourt, may have been similar. Interestingly, the lender of no. 501 was Kenneth Clark Esq., quite possibly the famous art historian who was then Director of the National Gallery.

For a short account of the Vulliamy family of watch and clockmakers, see Roger Smith's article in the Oxford Dictionary of National Biography (Oxford 2004 - also available online).

£ 30,000-45,000

€ 34,600-52,000 US\$ 39,300-59,000

VARIOUS OWNERS

40

ULYSSE NARDIN

PRESENTED TO PAUL WOOTON BY
PRESIDENT FRANKLYN D. ROOSEVELT
PINK GOLD KEYLESS OPEN-FACED WATCH
CIRCA 1928

Dial: silvered, applied Breguet numerals

Calibre: cal. UN 17" manual winding, 18 jewels

Movement number: 26'172

Case: 14ct pink gold, snap-on back with
personalised engraving

Case number: 196'278

Dimensions: 43.5mm diameter

Signed: case, dial and movement

Accessories: Ulysse Nardin Extract from the Archives, three photographs of Mr. Paul Wooton with President Roosevelt circa 1943, Mr. Wooton with Prime Minister Churchill, circa 1952, and of Mr. Paul Wooton with Queen Elizabeth II, circa 1957 and a pink metal chain

Mr. Paul Wooton was a very well-respected American newspaper correspondent during the mid-20th century. He began his career at the New Orleans Times-Picayune in 1911, shortly afterwards becoming the newspaper's Washington correspondent, covering the First World War in dispatches. His career continued to flourish and he served as president of the White House Correspondents' Association and president of the National Press Club throughout the 1940's.

He was particularly liked by President Franklin D. Roosevelt for his important work in the press at a particularly volatile time in the United States' history. They were great friends, attending the infamous White House Correspondents' Dinner together, as well as other important social and political press events at the time.

The inscription reads;

Presented to Paul Wooton by President Franklin D. Roosevelt, On Behalf of the Associated Business Papers, In Appreciation of His Outstanding Service to the Business Press in Time of War, June 11, 1943.

This watch is accompanied by an Ulysse Nardin Extract from the Archives which confirms that the watch was produced in their workshops in 1928 and then sold to the Bigalke & Eckert Co. New York within the same year. Bigalke and Eckert were the sole agents for Ulysse Nardin in the United States, and they were in business between 1920-1935.

£ 6,000-8,000

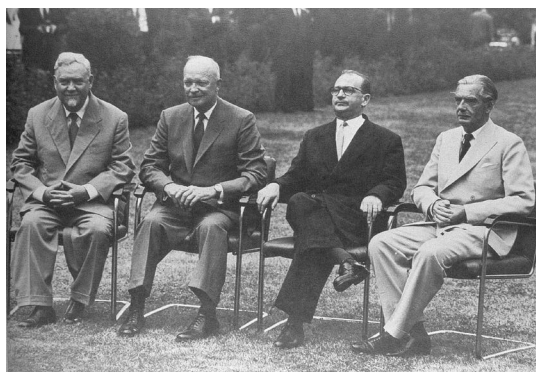
€ 7,000-9,300 US\$ 7,900-10,500



Sir Winston Churchill and Paul Wooton



President Franklin D. Roosevelt with Paul Wooton



Premier Nikolai A. Bulganin, President Dwight D. Eisenhower, Premier Edgar Faure and Prime Minister Sir Anthony Eden

41

VACHERON CONSTANTIN

PRESENTED TO THE PRIME MINISTER OF GREAT BRITAIN
SIR ANTHONY EDEN, REFERENCE 6032
YELLOW GOLD WRISTWATCH
MADE IN 1954

Dial: off-white

Calibre: cal. 453 manual winding, 17 jewels

Movement number: 513'261

Case: 18ct yellow gold, snap-on back with personalised engraving

Case number: 343'117

Closure: black unsigned alligator strap with unsigned yellow metal pin buckle

Dimensions: 34mm diameter

Signed: case, dial and movement

Accessories: Vacheron Constantin Extract from the Archives confirming year of manufacture in 1954

Robert Anthony Eden, 1st earl of Avon, Viscount Eden of Royal Leamington Spa, (June 12, 1897- January 14, 1977) was British foreign secretary intermittently between 1935 and 1955, becoming Prime Minister in 1955 until 1957. He had been a popular politician, renowned for his firm stance against Fascism throughout the 1930's. His leading role at the Geneva summit of 1955 was a major contribution in the global effort to end the Cold War. However, despite the important political progress he made at the 1955 summit, his short tenure as Prime minister came to an abrupt end due to an ill-judged

invasion into Egypt over control of the Suez Canal. This always seemed to overshadow other notable achievements over 30 years in the public eye.

The summit that took place on July 18th 1955 was a crucial meeting between the 'Big Four' Heads of Government (The United Kingdom, the United States, France and the USSR) to openly discuss European security, German unification, nuclear disarmament, and East-West relations and the mounting tensions between them. Although no firm agreements were reached, it was widely recognised that this was an important first step in easing the political deadlock between the World leaders.

Similar to the famous Victory watches, a group of Swiss dignitaries gifted the group the finest of Swiss horological production. Eight Reference 6032 Vacheron Constantin wristwatches were presented to them in tribute to the leaders' continued efforts to find peace. Each watch was personally engraved with the name of the politicians, the date of the conference and originally accompanied by a letter signed by the generous patrons expressing their gratitude.

The inscription on the watch reads, '*Hommage de Citoyens de Geneve, A son Excellence Sir Anthony Eden 1^{re} Ministre de Mojesté Britannique, Conference de Geneve July 1955*'

We are extremely grateful to Vacheron Constantin for opening their archives and sharing this incredible and fascinating piece of history.

• £ 5,000-7,000 € 5,800-8,100 US\$ 6,600-9,200

PROPERTY OF A DISTINGUISHED EUROPEAN COLLECTOR

LOTS 42-48

Carefully selected over a lifetime of passion for Rolex by a distinguished European Collector, this exquisite collection captures the essence of the celebrated brand through time.



42

42

ROLEX

PRINCE BRANCARD, REFERENCE 1490
YELLOW GOLD RECTANGULAR WRISTWATCH
CIRCA 1939

Dial: black

Calibre: extra prima manual winding, 17 jewels

Case: 18ct yellow gold Prince, snap-on back

Case number: 13'009

Closure: black unsigned alligator strap with 18ct yellow gold Rolex pin buckle

Dimensions: 26mm width x 43mm length

Signed: case, dial and movement

Accessories: none

The Rolex Prince, launched around 1928, is synonymous with a period of huge social and economic change. Everything about this watch was new; the layout of this newly patented watch movement allowed Rolex to use a rectangular case design instead of the traditional round case. This type of case allowed for a much larger dial, with an oversized and very legible subsidiary seconds dial.

Two models were introduced at that time, the more subdued rectangular sided 'doctor's watch', the reference 1343, and the flared sided *Brancard*, such as this present reference 1490.

This particular watch also features an attractive black dial which is perfectly offset by the yellow gold case.

Illustration of similar examples please see "The Best of Time, Rolex Wristwatches", by James M. Dowling and Jeffrey P. Hess, P. 110 - P. 133.

£ 3,000-5,000 € 3,500-5,800 US\$ 3,950-6,600



43

43

ROLEX

DATE, REFERENCE 15038
YELLOW GOLD WRISTWATCH WITH DATE
CIRCA 1986

Dial: silvered

Calibre: cal. 3035 automatic, 27 jewels

Movement number: 1'858'049

Case: 18ct yellow gold Oyster, screw-down crown and back

Case number: 9'535'906

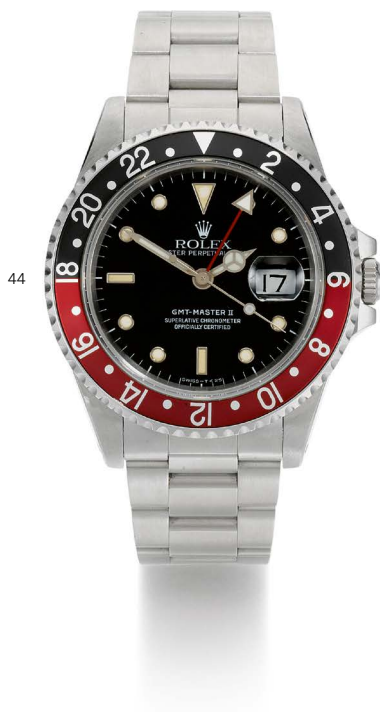
Closure: brown Rolex alligator strap with 18ct yellow gold Rolex pin buckle

Dimensions: 34mm diameter

Signed: case, dial and movement

Accessories: Rolex Guarantee dated April 5, 1989, Rolex Oyster booklet, green booklet, chronometer tag and presentation case

• £ 1,500-2,500 € 1,750-2,900 US\$ 2,000-3,300



44

44

ROLEX

GMT MASTER II, REFERENCE 16710
STAINLESS STEEL DUAL-TIME WRISTWATCH
WITH DATE AND BRACELET
CIRCA 1988

Dial: black

Calibre: cal. 3185 automatic, 31 jewels

Movement number: 5'441'617

Case: stainless steel Oyster, screw-down crown
and back

Case number: L'597'564

Closure: stainless steel Rolex Oyster bracelet
with integrated folding clasp

Dimensions: 40mm diameter, bracelet
circumference approximately 195mm

Signed: case, dial and movement

Accessories: Rolex Guarantee dated 17
September 1990, Rolex user manual and
presentation case

For a catalogue note about the Rolex GMT II
reference 16710, please refer to lot 6.

The present timepiece, manufactured in 1988,
displays a very sharp case and retains the original
factory bevels. The black and red 'Coke' bezel is
equally well-preserved.

£ 4,000-6,000

€ 4,650-7,000 US\$ 5,300-7,900



45

45

ROLEX

DAYTONA INVERTED 6 DIAL, REFERENCE
16520
STAINLESS STEEL CHRONOGRAPH
WRISTWATCH WITH BRACELET
CIRCA 1988

Dial: later, black

Calibre: cal. 4030 automatic, 31 jewels

Movement number: 33'165

Case: stainless steel Oyster, screw-down crown,
pushers and back

Case number: L'688'789

Closure: stainless steel Rolex Oyster bracelet
with integrated folding clasp

Dimensions: 40mm diameter, bracelet
circumference approximately 200mm

Signed: case, dial and movement

Accessories: Rolex Guarantee dated 28 February
1991, Rolex Oyster booklet, Rolex Cosmograph
booklet, green booklet and presentation case

Between 1988 and 2000, Rolex produced the first
automatic version of the Daytona, the reference
16520. The 40mm sports chronograph relied on
the Zenith El Primero caliber, extensively
modified by Rolex and named the cal. 4030. Over
the course of its 12-year-old life, the reference
16520 was produced in 5 different series and
available in stainless steel, yellow gold and in a
two-tone combination of both.

The present L series reference 16520 in stainless
steel left the Rolex manufacture in 1988 and has
little wear since. It is fitted with a third series
dial featuring an inverted 6 to the hour register, 5
text lines and a spread-out T Swiss T inscription.
This dial was introduced on the same year this
watch was originally sold. It is very likely that the
black dial was fitted by request from the original
purchaser. The case, retaining strong proportions
and most attractive finish, is adorned by a correct
third series bezel graduated to 400 units. The
first series bracelet (produced until 1994) with
fully brushed links is in very good condition.

This early automatic Daytona is accompanied
by its original guarantee dated from 1991, user
manuals and a presentation case. With its striking
condition and original set of accessories, this
wonderful early example of the increasingly
sought-after reference 16520 is an exciting
opportunity for a Daytona enthusiast.

£ 12,000-18,000

€ 13,900-20,800 US\$ 15,700-23,600

ROLEX

PRE-DAYTONA GUN-METAL, REFERENCE
6238

STAINLESS STEEL CHRONOGRAPH
WRISTWATCH
CIRCA 1965

Dial: silvered

Calibre: cal. 722 manual winding, 17 jewels

Case: stainless steel Oyster, screw-down crown
and back

Case number: 1'205'867

Closure: unsigned black alligator strap with
stainless steel Rolex pin buckle

Dimensions: 36mm diameter

Signed: case, dial and movement

Accessories: none

The Rolex reference 6238, colloquially referred to as the "Pre-Daytona", was produced between the early 1960s and 1967. Interestingly, its production life overlapped with the first Rolex Daytona, the reference 6239, launched in 1963 in the USA and the following year in Europe.

The present ref. 6238 was manufactured in 1965 and fitted with the cal. 722, the evolution of the 72B, which was introduced the same year and which equipped the 6238 until 1967.

The monochromatic light grey 'gun-metal' dial, fitted on this lot, was the third and of the last series, introduced around 1964.

• £ 12,000-18,000

€ 13,900-20,800 US\$ 15,700-23,600



ROLEX

DAYTONA BIG RED, REFERENCE 6263
 STAINLESS STEEL CHRONOGRAPH WRISTWATCH WITH
 BRACELET
 CIRCA 1979

Dial: silvered

Calibre: cal. 727 manual winding, 17 jewels

Movement number: 10'465

Case: stainless steel Oyster, screw-down crown, pushers and back

Case number: 6'294'555

Closure: stainless steel Rolex Oyster bracelet with integrated folding clasp

Dimensions: 37mm diameter, bracelet circumference approximately 190mm

Signed: case, dial and movement

Accessories: Rolex Guarantee dated 11 February 1978, sales tag and presentation case

The last in the long lineage of the hand-wound Rolex Daytonas were the references 6263 and 6265, produced from 1969 to 1988. The former came with a black acrylic bezel, as in this instance, and the latter with a stainless-steel bezel. They are regarded as the ultimate evolution of the vintage Daytona models. Superseding references 6262 and 6264, and following the success of the experimental 6240, the 6263 and 6265 models are further distinguished from their preceding references by the introduction of larger, screw-down chronograph pushers and winding crown and the addition of 'Oyster' signed to the dial. The introduction of these attributes marked the standard for all future references and are still utilised on Daytona models to this day.

The present piece is preserved in truly remarkable condition. The case has very sharp edges and still retains the original sticker on its case back. The Big Red floating dial is splendid with the lume plots all present and complete and with the patina perfectly matching the hands. The watch is fitted with its original matching bezel as well as its 78350 bracelet in beautiful condition with its correct 571 endlinks.

Last but not least, it is accompanied by its Rolex Guarantee, tag and presentation case. This lot will captivate the most demanding connoisseur.

£ 30,000-50,000

€ 34,600-58,000 US\$ 39,300-65,500



ROLEX

DAYTONA PAUL NEWMAN, REFERENCE 6262
STAINLESS STEEL CHRONOGRAPH WRISTWATCH
CIRCA 1971

Dial: black

Calibre: cal. 727 manual winding, 17 jewels

Case: stainless steel Oyster, screw-down crown and back

Case number: 2'737'249

Closure: unsigned black alligator strap with stainless steel Rolex pin buckle

Dimensions: 37mm diameter

Signed: case, dial and movement

Accessories: blank Rolex Guarantee and presentation case

The reference 6262, as well as its cousin 6264, had the shortest production period and were available only for approximately two years, between the very end of the 1960's and 1972.

The reference 6262 can be considered as the bridge between the early and the late vintage Rolex Daytona models. Indeed, it combines the pump pushers such as the 6239, the first Daytona, and the 727 Valjoux calibre, the final evolution of the movement which was also housed in the 6263 and 6265 models.

The present watch features the iconic "Paul Newman" dial. It was named after the actor was said to have worn one in the 1969 while promoting the film 'Winning'.

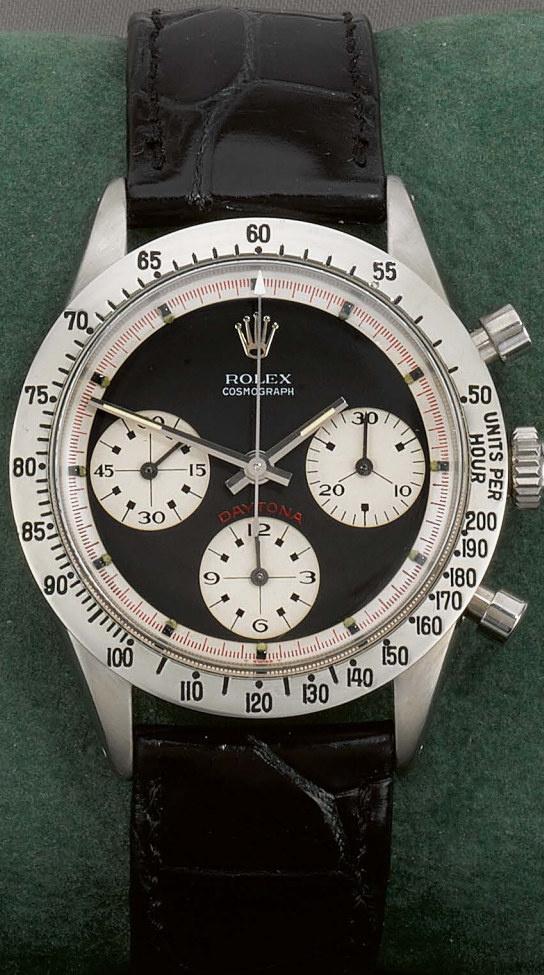
The three-colour black Paul Newman dial is rarely seen on a 6262 as it is usually fitted with the two-colour panda version. The black dial is perfectly complemented by the red outer track and Daytona signature above the subsidiary dial at 6 o'clock, giving a masculine twist to the piece.

• £ 70,000-120,000

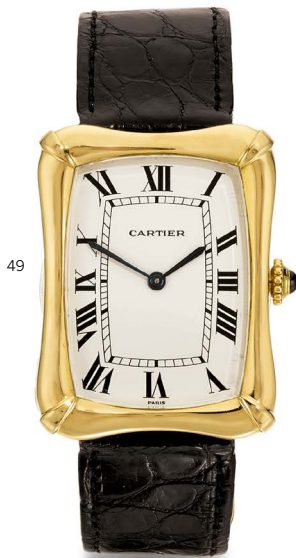
€ 81,000-139,000 US\$ 92,000-157,000



ROLEX



VARIOUS OWNERS



49

49

CARTIER

BAMBOO COUSSIN
YELLOW GOLD RECTANGULAR WRISTWATCH
CIRCA 1970

Dial: white

Calibre: cal. 78-1 manual winding, 17 jewels

Case: 18ct yellow gold, back secured by 4 screws

Case number: 781'020'222

Closure: black Cartier alligator strap with 18ct yellow gold Cartier deployant buckle

Dimensions: 27.5mm width x 36mm length

Signed: case, dial and movement

Accessories: none

Available in both men's and ladies' sizes, the Cartier Bamboo was launched during the early 1970s. It is a modern testimony of Cartier's inspiration from Asian culture. This influence started in the early 20th century with introduction of the Cartier Tank Chinoise in 1922 and beautiful Art Deco clocks.

The present large version of this rare timepiece is offered in well-preserved condition.

• £ 5,000-7,000

€ 5,800-8,100 US\$ 6,600-9,200



50

50

BLANCPAIN

LEMAN MOONPHASE, REFERENCE 2763
LIMITED EDITION PINK GOLD TRIPLE
CALENDAR WRISTWATCH WITH MOON-
PHASES
CIRCA 1998

Dial: black

Calibre: cal. 6553/6763 automatic, 29 jewels

Case: 18ct pink gold, snap-on back

Case number: limited edition 54/300

Closure: black Blancpain calfskin strap with 18ct pink gold Blancpain folding clasp

Dimensions: 38mm diameter

Signed: case, dial and movement

Accessories: Blancpain Guarantee dated March 1998, Blancpain user manual, setting pin and presentation case

£ 3,500-5,500

€ 4,050-6,400 US\$ 4,600-7,200



51

51

BLANCPAIN

VILLERET, REFERENCE 5585-1418-55
YELLOW GOLD PERPETUAL CALENDAR
CHRONOGRAPH WRISTWATCH WITH MOON-
PHASES
CIRCA 2000

Dial: white

Calibre: cal. 5585 automatic, 35 jewels

Case: 18ct yellow gold, snap-on back

Case number: 141

Closure: black Blancpain alligator strap with 18ct yellow gold Blancpain pin buckle

Dimensions: 34mm diameter

Signed: case, dial and movement

Accessories: Blancpain user manual and presentation case

The present automatic timepiece gathers two of the most desirable complications: the perpetual calendar with moon-phases and the chronograph.

• £ 4,000-6,000

€ 4,650-7,000 US\$ 5,300-7,900



52

PIAGET

ALTIPLANO DOUBLE JEU, REFERENCE 10436
 WHITE GOLD DUAL TIME ZONE WRISTWATCH WITH
 CONCEALED DIAL
 CIRCA 2018

Dials: silvered and dark grey

Calibre: cal. 838P manual winding, 19 jewels and cal. 830P
 manual winding, 19 jewels

Case: 18ct white gold hinged cases, sapphire crystal display
 inner-back secured by 8 screws, snap-on plain outer-back

Case number: 978'855

Closure: black Piaget alligator strap with 18ct white gold Piaget
 folding clasp

Dimensions: 43mm diameter

Signed: case, dial and movement

Accessories: Piaget International Limited Warranty dated 23
 January 2018, Piaget user manual and presentation case

The Double Jeu is a highly unconventional creation by Piaget.
 This large timepiece comprises two watches, each of them
 featuring its own independent movement and dial.

The cases are hinged so that the second watch with the black
 dial is protected by the front one fitted with the silvered dial.
 The hinge is unlocked by pressing the button at 3 o'clock,
 revealing both the second timepiece while enabling the wearer to
 admire the movement of the first one through the sapphire
 crystal display back.

• £ 6,000-9,000 € 7,000-10,400 US\$ 7,900-11,800



F.P. JOURNE

CHRONOMÈTRE BLEU
TANTALUM WRISTWATCH
CIRCA 2011

Dial: blue

Calibre: cal. 1304 manual winding, 22 jewels

Case: tantalum, sapphire crystal display back secured by 5 screws

Case number: 132-CB

Closure: dark blue F. P. Journe alligator strap with F.P. Journe tantalum pin buckle

Dimensions: 39mm diameter

Signed: case, dial and movement

Accessories: F. P. Journe Warranty Card dated 11 March 2011, F.P. Journe user manual and presentation case

Francois-Paul Journe began his career as a clock restorer in France. Ultimately, the talented watchmaker created his own manufacture in 1999. His innovative approach to watchmaking and great sense of design inevitably

made Francois Paul Journe one of the most acclaimed independent watchmakers and the only one to win the celebrated Aiguille d'Or prize three times.

The Chronometre Bleu timepiece is innovative in many ways. To begin with, the case is made from tantalum, a seldom seen and difficult metal to work with. The dial, made by the Journe Cadrans integrated dial manufacture, is lacquered to perfection to resemble a striking blue mirror above which the cream Roman numerals appear to be floating. Finally, the twin barrel movement is made from 18ct gold, a unique brand signature. The Chronometre Bleu is among FP Journe's most popular wristwatches to date and has become an increasingly sought-after piece.

The present example which left the Geneva ateliers in 2011 and stands in great condition is accompanied by its original warranty card, instructions manual and presentation case.

• £ 10,000-15,000

€ 11,600-17,300 US\$ 13,100-19,700



F.P. JOURNE
Invenit et Fecit

Breguet
 depuis 1775

Certificat d'origine et de garantie — Certificate of origin and warranty

Date d'achat 16-DEC-2011 Date of purchase

Modèle réf. 5317-PT 12 9V6 Model ref.

Montre N° (cf. cadran) 3109AP (cf. dial)

Breguet
 depuis 1775



54

BREGUET

CLASSIQUE, REFERENCE 5317
 PLATINUM TOURBILLON WRISTWATCH WITH POWER
 RESERVE
 CIRCA 2011

Dial: silvered

Calibre: cal. 587 DR automatic, 32 jewels

Movement number: 1623

Case: platinum, snap-on sapphire crystal display back

Case number: 3109AP

Closure: black Breguet alligator strap with platinum Breguet folding clasp

Dimensions: 40mm diameter

Signed: case, dial and movement

Accessories: Breguet Warranty dated 16 December 2011, Breguet user manual and presentation case

Abraham-Louis Breguet patented the tourbillon escapement in 1801 as a new way to compensate for the effects of gravity on the accuracy of a watch.

The present platinum example was manufactured in 2011 and proudly perpetuates the Breguet tourbillon legacy. Its traditional dial bears another brand signature: the hand guilloché decoration. Finally, the large tourbillon cage at 6 o'clock and the power reserve indication at 12 create a most pleasant symmetry to the dial.

The heavy platinum case with a coin-edge band has a sapphire crystal display back enabling admiration of the complex and beautifully decorated automatic movement.

This impressive piece is offered with its original Warranty and wooden presentation case.

• £ 20,000-30,000

€ 23,100-34,600 US\$ 26,200-39,300



55

55

PANERAI

LUMINOR LOGO PRÉ-VENDÔME, REFERENCE 5218-201A
STAINLESS STEEL WRISTWATCH
CIRCA 1993

Dial: black

Calibre: cal. UT-6497 manual winding, 17 jewels

Movement number: 3126

Case: stainless steel, screw-down back and lock-down crown

Case number: 0098

Closure: black Panerai calfskin strap with stainless steel Panerai pin buckle

Dimensions: 44mm diameter

Signed: case and dial

Accessories: Panerai registration and service booklet including Certificate of Conformity dated 27 October 1993, additional brown Panerai calfskin strap, screwdriver and Panerai presentation case

Watches made between the rebranding of Panerai in 1993 to the acquisition of the company by the Vendôme group in 1996-97 are usually referred to as “pre-Vendôme” models. The “logo” Luminor is so-nicknamed because of the presence of the distinctive “OP” signature for Officine Panerai on the dial.

£ 7,000-10,000 € 8,100-11,600 US\$ 9,200-13,100

56



56

AUDEMARS PIGUET

ROYAL OAK OFFSHORE, REFERENCE 25940SK.
OO.D002CA.01

STAINLESS STEEL AND RUBBER CHRONOGRAPH
WRISTWATCH WITH DATE
CIRCA 2010

Dial: black

Calibre: cal. 2326/2840 automatic, 50 jewels

Case: stainless steel, rubber bezel, screw-down crown, back secured by 8 screws

Case number: F62'183

Closure: black Audemars Piguet rubber strap with stainless steel Audemars Piguet folding clasp

Dimensions: 42mm diameter

Signed: case, dial and movement

Accessories: Audemars Piguet user manual and presentation case

The Royal Oak Offshore collection was launched in 1993 and has held a special place in the enthusiast's collections since then. This piece is a typical example with its strong 42mm case and rubber bezel.

£ 5,000-8,000 € 5,800-9,300 US\$ 6,600-10,500

AUDEMARS PIGUET

ROYAL OAK OFFSHORE ALINGHI TEAM, REFERENCE
26062OR.OO.A002CA.01

LIMITED EDITION PINK GOLD AND FORGED CARBON
FLYBACK CHRONOGRAPH WRISTWATCH
CIRCA 2007

Dial: black

Calibre: cal. 2326/2848 automatic, 50 jewels

Movement number: 668'597

Case: 18ct pink gold, forged carbon bezel, screw-down crown,
back secured by 8 screws

Case number: F91126-0281, limited edition 281/600

Closure: black Audemars Piguet rubber strap with 18ct pink
gold Audemars Piguet pin buckle

Dimensions: 44mm diameter

Signed: case, dial and movement

Accessories: Audemars Piguet warranty dated November 7th,
2007, Audemars Piguet user manual and presentation case

The Audemars Piguet Royal Oak Offshore Alinghi Team Chronograph was released in 2007. The entire series was limited to 2007 pieces whereas only 600 were made in this configuration with an 18ct pink gold case and forged carbon bezel. This watch noticeably bears the Alinghi symbol at 3 o'clock and depicts the sailing boat on the case-back.

Audemars Piguet was the sponsor of the Swiss sailing team Alinghi and to celebrate the anniversary of their victory at the 31st America's Cup in 2003, Audemars Piguet released this Regatta-timer with flyback function. This movement was designed with timing sailing competitions in mind and the in-house forged carbon bezel increases the shock resistance of the watch.

£ 12,000-18,000 € 13,900-20,800 US\$ 1 000-23 600



GARANTEE WARRANTY GARANTIE	GARANZIA GARANTIA ГАРАНТИЯ	保証書 保修 保固
Número de garantía Warranty number	A5R6A6.1578	
Número de référence Reference number	26062OR.OO.A002CA.01	
Número de boîtier Case number	F91126-0281	
Número de mouvement Movement number	668597	
Calibre Calibre	2326/2848	12/J
Pays Country	PT	100

Date / Date

07 / NOV / 07

Signature du détaillant / Retailer's signature

JOAQUINA TORRES
Rua do Bar, 255
1100 LISBOA

AP
AUDEMARS PIGUET
Le maître de l'horlogerie depuis 1875



58

RICHARD MILLE

REFERENCE RM005 AE T1
TITANIUM TONNEAU-FORM WRISTWATCH WITH DATE
CIRCA 2007

Dial: semi-skeletonised

Calibre: cal. RM-005 automatic, 32 jewels

Movement number: 1436

Case: titanium, sapphire crystal display back secured by 4 screws

Case number: 251

Closure: black Richard Mille rubber strap with titanium Richard Mille pin buckle

Dimensions: 38mm width x 45mm length

Signed: case, dial and movement

Accessories: Richard Mille Certificate of Authenticity

Instantly recognizable thanks to their tonneau-form case and highly technical architectural details, Richard Mille watches are considered as a must-have in any watch collection.

Clearly inspired by and using the World's most cutting-edge technologies, Richard Mille refused to compromise on strength or design. This watch therefore uses a combination of the lightest and hardest materials including Titanium and tungsten.

In the present watch, Mille wanted to give the wearer the opportunity to minutely adjust the very shape of the rotor to slow down or speed up its weight and motion according to their individual needs. He added the tiny 'ribs' on either side of the rotor which could be uniquely adjusted for the wearer.

The RM005 is the classic piece from Richard Mille and is extremely comfortable on the wrist.

£ 15,000-25,000 € 17,300-28,800 US\$ 19,700-32,700



59

59

PATEK PHILIPPE

RETAILED BY TRUST JOYERO, REFERENCE 600
 YELLOW GOLD OPEN-FACED WATCH WITH TWO-TONE
 SECTOR DIAL
 MADE IN 1930

Dial: silvered

Calibre: 17'' manual winding, 18 jewels

Movement number: 823'773

Case: 18ct yellow gold, snap-on back

Case number: 611'574

Dimensions: 44.5mm diameter

Signed: case, dial and movement

Accessories: Patek Philippe Extract from the Archives
 confirming date of sale on February 12th, 1935

The reference 600 was launched around 1930 and available until 1969. Over its long production period, the model was fitted with dials in numerous different configurations, from the classic plain pointed rectangular indexes to cloisonné enamel dials or diamond-set indexes.

This lot has a most appealing two-tone sector dial typical of that period. It is further signed by the Buenos Aires based retailer, Trust Joyero.

£ 2,500-3,500 € 2,900-4,050 US\$ 3,300-4,600



60

60

PATEK PHILIPPE

REFERENCE 600
 YELLOW GOLD OPEN-FACED WATCH
 MADE IN 1938

Dial: off-white

Calibre: 17'' manual winding, 18 jewels

Movement number: 880'303

Case: 18ct yellow gold, snap-on back

Case number: 617'128

Dimensions: 44.5mm diameter

Signed: case, dial and movement

Accessories: Patek Philippe Extract from the Archives
 confirming date of sale on November 11th, 1938

The reference 600 was available in yellow, pink, white gold and platinum as well as some pieces with a combination of pink and white gold. For further information regarding the Patek Philippe reference 600, please refer to lot 58.

£ 2,500-3,500 € 2,900-4,050 US\$ 3,300-4,600



61

61

PATEK PHILIPPE

REFERENCE 1590
YELLOW GOLD WRISTWATCH WITH STEPPED
DROP LUGS
MADE IN 1947

Dial: silvered
Calibre: cal. 12-120 manual winding, 18 jewels
Movement number: 960'211
Case: 18ct yellow gold, snap-on back
Case number: 643'105

Closure: brown unsigned alligator strap with
unsigned yellow metal pin buckle

Dimensions: 35mm diameter
Signed: case, dial and movement

Accessories: Patek Philippe Extract from the
Archives confirming date of sale on August 29th,
1947

The reference 1590 is a particularly interesting
vintage timepiece. Firstly, it has a generous
35mm case diameter making it oversized for that
period and a fitting size by today's standards.
Furthermore, the stepped drop lugs add a unique
character to the watch.

The reference 1590 was produced during six
years only, between 1944 and 1950. Until today,
less than twenty examples in yellow gold have
been offered at auction.

• £ 3,500-5,500

€ 4,050-6,400 US\$ 4,600-7,200



62

62

PATEK PHILIPPE

CALATRAVA, REFERENCE 3744/1
WHITE GOLD BRACELET WATCH
MADE IN 1978

Dial: white
Calibre: cal. E 27 quartz, 6 jewels
Movement number: 1'502'467
Case: 18ct white gold, snap-on back
Case number: 2'780'040
Closure: integrated 18ct white gold bracelet with
clasp

Dimensions: 33mm diameter, bracelet
circumference approximately 185mm

Signed: case, dial and movement

Accessories: Patek Philippe Certificate of
Origin, Patek Philippe Extract from the Archives
confirming date of sale on January 15th, 1980

The reference 3744 was produced between
1978 and 1999. It holds a special place in Patek
Philippe's history as it was the first quartz watch
produced in series after the famous Beta 21.

£ 4,000-6,000

€ 4,650-7,000 US\$ 5,300-7,900



63

63

PATEK PHILIPPE

GONDOLO, REFERENCE 3842
YELLOW GOLD TONNEAU-FORM
WRISTWATCH WITH BREGUET NUMERALS
MADE IN 1985

Dial: silvered
Calibre: cal. 177 manual winding, 18 jewels
Movement number: 1'369'693
Case: 18ct yellow gold, snap-on back secured by
1 screw

Case number: 2'824'527

Closure: unsigned black alligator strap with
unsigned 18ct yellow gold pin buckle

Dimensions: 29mm width x 37mm length

Signed: case, dial and movement

Accessories: Patek Philippe Extract from the
Archives confirming date of sale on February
13th, 1986

The reference 3842 was produced between 1983
and 1998 and belongs to the Gondolo collection.
The construction of the case is unusual as it
is made of two pieces and secured by a screw to
the case back. This example is particularly attractive
with the elegant combination of a yellow gold
case and matching applied Breguet numerals.

• £ 2,500-3,500

€ 2,900-4,050 US\$ 3,300-4,600

64



64

PATEK PHILIPPE

GONDOLO, REFERENCE 5010G
WHITE GOLD RECTANGULAR WRISTWATCH
WITH SECTOR DIAL
MADE IN 2001

Dial: black

Calibre: cal. 215 PS manual winding, 18 jewels

Movement number: 1'876'508

Case: 18ct white gold, back secured by 4 screws

Case number: 4'154'148

Closure: brown Patek Philippe alligator strap with 18ct white gold Patek Philippe pin buckle

Dimensions: 25mm width x 29mm length

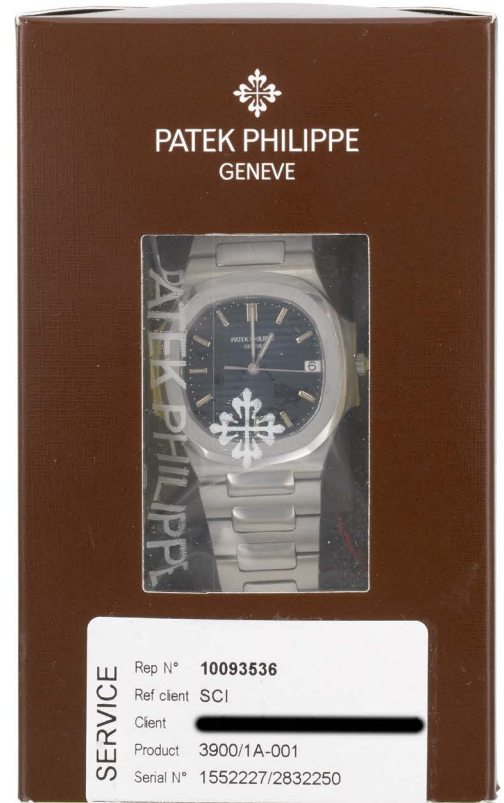
Signed: case, dial and movement

Accessories: Patek Philippe Extract from the Archives confirming the date of sale on November 8th, 2001 and presentation case

The Reference 5010 was produced between 1993 and 2005. This lot is particularly alluring with its white gold case and black sector dial combination.

• £ 4,000-6,000

€ 4,650-7,000 US\$ 5,300-7,900



65

65

PATEK PHILIPPE

NAUTILUS SERVICE SEALED, REFERENCE
3900/1
STAINLESS STEEL BRACELET WATCH WITH
DATE
MADE IN 1986

Dial: black

Calibre: cal. E23 SC quartz, 8 jewels

Movement number: 1'552'227

Case: stainless steel Nautilus, screw-down crown and back

Case number: 2'832'250

Closure: integrated stainless steel Nautilus bracelet with double folding clasp

Dimensions: 33mm diameter, bracelet circumference approximately 150mm

Signed: case, dial and movement

Accessories: Patek Philippe Extract from the Archives confirming date of sale on May 7th, 1987 and presentation case

The reference 3900 was described as the 'boy size' in the Nautilus family. It was only produced between 1985 and 1989.

This watch has just been serviced and is presented in its double sealed service box.

£ 3,500-5,500

€ 4,050-6,400 US\$ 4,600-7,200

PATEK PHILIPPE

NAUTILUS, REFERENCE 5712/1
 STAINLESS STEEL BRACELET WATCH WITH DATE,
 MOON-PHASES AND POWER RESERVE
 MADE IN 2007

Dial: blue

Calibre: cal. 240 PS automatic, 29 jewels

Movement number: 3'174'922

Case: stainless steel Nautilus, screw-down crown and sapphire crystal display back

Case number: 4'419'326

Closure: integrated stainless steel Nautilus bracelet with double folding clasp

Dimensions: 40.5mm diameter, bracelet circumference approximately 180mm

Signed: case, dial and movement

Accessories: Patek Philippe Certificate of Origin, Extract from the Archives confirming date of sale on November 26th, 2007, Patek Philippe booklets, user manual, setting pin and presentation case

In 1976, Gerald Genta designed the first Nautilus case for Patek Philippe which was given the reference 3700. After 30 years of the production of the Nautilus model, the reference the 5712, very similar to the 3712, was introduced with a date indicator, moon phases and a power reserve indicator. This piece was made in 2007 and is part of the early series as its movement bears the Geneva seal. The Patek Philippe seal replaced it in 2009, making these '5712 Geneva seals' rarer and even more collectible.

£ 20,000-30,000

€ 23,100-34,600 US\$ 26,200-39,300



PATEK PHILIPPE
 GENEVE
Certificat d'Origine
 Certificate of Origin

*Nous certifions que la montre
 We certify that the watch*

Référence: 5712/1A-001

Mouvement: 3'174'922

Calibre: 240 PS IRM C LU

*a été construite et réglée aux diverses températures et positions dans nos
 ateliers de Genève.
 was manufactured, and adjusted at various temperatures and positions, in
 our Geneva workshops.*

Robis / Movement jewels: 29R
 Cadran / Dial: NOIR TRAME INDEX GRIS + SLM C3
 Boîtier / Case: Acier
 Bracelet / Bracelet: ACIER

Pierres / Gem stones:

PATEK PHILIPPE
 GENEVE

Nautilus

Ref. 5712
 5712/1A

English
 Français
 Deutsch
 Italiano
 Español
 日本語
 廣東話
 國語

PATEK PHILIPPE

NAUTILUS, REFERENCE 5711/1A-010
STAINLESS STEEL BRACELET WATCH WITH DATE
CIRCA 2015

Dial: blue

Calibre: cal. 324 SC automatic, 29 jewels

Movement number: 5'862'083

Case: stainless steel Nautilus, screw-down crown and sapphire crystal display back

Case number: 6'040'712

Closure: integrated stainless steel Nautilus bracelet with double folding clasp

Dimensions: 40.5mm diameter, bracelet circumference approximately 170mm

Signed: case, dial and movement

Accessories: Patek Philippe Certificate of Origin, Patek Philippe leather folder with booklets and user manual, one additional stainless steel bracelet link, one sales tag and presentation case

The iconic design of the Nautilus was created by Gerald Genta. He had a crucial influence on the watch world thanks to some of his famous designs, which also included the Audemars Piguet Royal Oak in 1972. Genta's design for the Nautilus was inspired by portholes on ships.

The first iteration of the Nautilus was the reference 3700, which was released in 1976. This reference was one of the first high-end luxury watches made exclusively out of steel. At the time, it was a ground-breaking approach, especially considering the quartz crisis hitting the traditional Swiss industry. Watch brands such as Patek Philippe felt the need to offer something different. Ultimately this audacious move paid off and the Nautilus quickly became a central piece in many collections.

Over time there have been many versions of the Nautilus including versions in precious metals.

In 2006, 30 years after the initial release of the Nautilus 'Jumbo', Patek introduced the reference 5711/1A which became an instant success subject to an extensive waiting list.

This particular watch made in stainless steel, comes as a complete set including the original invoice and Certificate of origin.

£ 25,000-40,000

€ 28,800-46,100 US\$ 32,700-52,500





PATEK PHILIPPE

NAUTILUS SERVICE SEALED, REFERENCE 5712R-001
PINK GOLD WRISTWATCH WITH DATE, MOON-PHASES
AND POWER RESERVE
MADE IN 2006

Dial: brown

Calibre: cal. 240 PS automatic, 29 jewels

Movement number: 3'172'287

Case: 18ct pink gold Nautilus, screw-down crown and sapphire crystal display back

Case number: 4'396'573

Closure: dark grey Patek Philippe alligator strap with 18ct pink gold Patek Philippe double folding clasp

Dimensions: 40mm diameter

Signed: case, dial and movement

Accessories: Patek Philippe Certificate of Origin. Extract from the Archives confirming date of sale on December 19th, 2006, one extra brown Patek Philippe alligator strap, Patek Philippe user manual and presentation case

The reference 5712 was introduced in 2006 to celebrate the 30th anniversary of the Nautilus.

The model is produced in stainless steel, white gold, pink gold, two-tone as well as a unique piece in titanium.

The present lot in pink gold with an alligator strap and from the first year of production of the reference is particularly attractive as it is in excellent condition, unused since it was serviced and accompanied by its original presentation case and Certificate of Origin.

• £ 18,000-25,000

€ 20,800-26,800 US\$ 23,600-32,700



PATEK PHILIPPE

REFERENCE 5035G-025
 WHITE GOLD ANNUAL CALENDAR WRISTWATCH
 MADE IN 2004

Dial: black

Calibre: cal. 315 S QA automatic, 35 jewels

Movement number: 3'136'367

Case: 18ct white gold, screw-down sapphire crystal display back

Case number: 4'263'235

Closure: black Patek Philippe alligator strap with 18ct white gold Patek Philippe pin buckle

Dimensions: 37mm diameter

Signed: case, dial and movement

Accessories: Patek Philippe Certificate of Origin, Patek Philippe Extract from the Archives confirming date of sale on May 25th, 2004, Patek Philippe user manual and setting pin

Patek Philippe first introduced the reference 5035 in 1996 and the model stayed in production until 2005. This reference became the world's first annual calendar wristwatch. This particular calibre 315 S-QA uses 41 more parts than the Patek Philippe perpetual calendar calibers.

The reference 5035 is today considered as the inspiration for later models such as 5036, 5350, 5146, to name but a few.

The present watch was manufactured in 2004 and has a most attractive combination of a white gold case and black dial.

• £ 10,000-15,000

€ 11,600-17,300 US\$ 13,100-19,700



*C*ertificat d'
*C*ertificate of

Nous certifions qu
 We certify that

ence:

ment:

5035G-025

3136367/4263235

315 S QA 24H aut.

IPPE

PATEK PHILIPPE

REFERENCE 3940J
YELLOW GOLD PERPETUAL CALENDAR WRISTWATCH
WITH MOON-PHASES AND LEAP-YEAR INDICATION
MADE IN 1991

Dial: silvered

Calibre: cal. 240 Q automatic, 27 jewels

Movement number: 772'996

Case: 18ct yellow gold, snap-on sapphire crystal display back

Case number: 2'905'252

Closure: brown Patek Philippe alligator strap with 18ct yellow gold Patek Philippe pin buckle

Dimensions: 36mm diameter

Signed: case, dial and movement

Accessories: Patek Philippe Certificate of Origin, Extract from the Archives confirming date of sale on January 31st, 1992, Patek Philippe leather folder with booklets and user manual, one setting pin, one additional plain 18ct yellow gold caseback and later presentation case

The 3940 was produced over a period of twenty years from about 1985 to 2007. It is considered as the quintessential automatic perpetual calendar reference manufactured by Patek Philippe.

The design was so well received and timeless that it was preserved by its successor, the reference 5140, where only subtle changes were made.

Becoming increasingly collectible, the 3940 underwent several evolutions. The present lot belongs to the second series which was produced between 1988 and 1998. Pieces from that series have an opaline silvered dial, beveled subsidiary dials with divided leap year indication, 'obus' indexes and a slightly larger Patek Philippe signature.

The present lot still retains very good proportions, and is offered with its two original case backs, Certificate of Origin and literature.

• £ 18,000-28,000

€ 20,800-32,300 US\$ 23,600-36,700



PATEK PHILIPPE

IN CELEBRATION OF 200 YEARS BOODLE & DUNTHORNE,
REFERENCE 5049

LIMITED EDITION PLATINUM PERPETUAL CALENDAR
WRISTWATCH WITH MOON-PHASES AND LEAP-YEAR
INDICATION

MADE IN 1999

Dial: black

Calibre: cal. 240 Q automatic, 27 jewels

Movement number: 3'124'468

Case: platinum, snap-on back

Case number: 4'065'356, limited edition 18/20

Closure: black Patek Philippe alligator strap with platinum
Patek Philippe pin buckle

Dimensions: 35mm diameter

Signed: case, dial and movement

Accessories: Patek Philippe Certificate of Origin, Extract from
the Archives confirming date of sale on June 3rd, 1999, Patek
Philippe user manual, booklets, setting pin and Patek Philippe
presentation watch winder

The prestigious British jewellery and watches retailer, Boodle & Dunthorne was founded in 1798 and celebrated their 200th anniversary in 1998.

For this special event, they commissioned a very limited edition of twenty wristwatches from Patek Philippe.

The classic stepped platinum case houses a perpetual calendar movement and a black dial. The snap-on case back is decorated with an engraving commemorating the anniversary. It also bears the limited edition number, the present lot being number 18. The piece is extremely elegant yet understated.

The present timepiece is offered on behalf of the original and only owner, who has kept it for twenty years in outstanding condition. It comes as a complete set with the original Patek Philippe watch winder, Certificate of Origin, booklets, and even the original sealed setting pin.

This lot represents a rare opportunity to acquire one of the most collectible modern Patek Philippe perpetual calendars.

• £ 30,000-50,000

€ 34,600-58,000 US\$ 39,300-65,500



PROPERTY OF AN IMPORTANT COLLECTOR

PATEK PHILIPPE

WORLD TIME, REFERENCE 5131G-001
 WHITE GOLD WORLD TIME WRISTWATCH WITH
 CLOISSONNÉ ENAMEL DIAL
 MADE IN 2010

Dial: silvered, cloisonné enamel**Calibre:** cal. 240 HU automatic, 33 jewels**Movement number:** 5'530'456**Case:** 18ct white gold, screw-down sapphire crystal display back**Case number:** 4'500'999**Closure:** black Patek Philippe alligator strap with 18ct white gold Patek Philippe folding clasp**Dimensions:** 39.5mm diameter**Signed:** case, dial and movement**Accessories:** Patek Philippe Certificate of Origin, Extract from the Archives confirming date of sale on August 19th, 2010, Patek Philippe service invoice and user manual, presentation case

Patek Philippe launched the reference 5131 in 2008. First introduced in yellow gold, the white gold version, as the present example, was also unveiled at Baselworld the following year. Today discontinued, the 5131G is considered both as an horological marvel as well as a work of art with its hand painted cloisonné enamel dial depicting four continents, Europe, Asia, Africa and Oceania.

Due to the laborious nature of the enamelling process, Patek Philippe only produces a limited number of this reference every year, making this a highly sought-after watch among collectors. The reference was in fact already subject to a long waiting list at the time of production. Additionally, each dial is individually enameled by hand, resulting in no two dials being identical.

As the perpetual calendar chronograph pieces, the World Time watches are iconic models from Patek Philippe. The manufacture has kept the essence of the early references such as the 1415 which was first introduced in 1939 and engineered by Louis Cottier. Coincidentally, the first 1415 with an enamel dial, also depicting a map, was made exactly 60 years before the 5131 was introduced.

Until today, less than 25 examples of the 5131G have appeared on the market. The present lot is offered on behalf of an important private collector, in immaculate condition, just serviced by Patek Philippe and accompanied by all its original accessories.

⊙ £ 55,000-110,000

€ 63,500-127,000 US\$ 72,000-144,000







73

73

PROPERTY OF THE FAMILY OF THE ORIGINAL OWNER

OMEGA

SPEEDMASTER ED WHITE, REFERENCE ST 105.003-65
STAINLESS STEEL CHRONOGRAPH WRISTWATCH
MADE IN 1966

Dial: black

Calibre: cal. 321 manual winding, 17 jewels

Movement number: 24'004'538

Case: stainless steel, screw-down back

Closure: unsigned black calfskin strap with unsigned stainless steel pin buckle

Dimensions: 39mm diameter

Signed: case, dial and movement

Accessories: invoice dated 1 March 1969, Omega Extract from the Archives confirming delivery to the United Kingdom in 1966, Burrells service certificate, original hour, minute and subdial hands, original Omega hesalite crystal, incomplete original pusher parts

This third iteration of the Speedmaster, reference ST 105.003, is also known as the Ed White among watch collectors. Even though the Speedmaster was popular among many astronauts such as Jim Lovell and Eugene Cernan, it is Ed White that is most closely associated with this particular reference. Indeed, he wore his Omega during the Gemini IV mission in 1965, which saw White as the first American performing an E.V.A. (Extra vehicular activity) in space. It was only shortly after that the Speedmaster was flight certified by NASA to become the official watch for the Apollo missions and ultimately the first watch that went to the moon.

£ 4,000-6,000 € 4,650-7,000 US\$ 5,300-7,900

74



74

OMEGA

SPEEDMASTER, REFERENCE 2998-6
STAINLESS STEEL CHRONOGRAPH WRISTWATCH
MADE IN 1962

Dial: black

Calibre: cal. 321 manual winding, 17 jewels

Movement number: 18'645'549

Case: stainless steel, screw-down back

Closure: unsigned black calfskin strap with unsigned stainless steel pin buckle

Dimensions: 39mm diameter

Signed: case, dial and movement

Accessories: Omega Extract from the Archives confirming delivery to the United Kingdom in 1962

When the ref CK 2998 was introduced in 1959, there were many successive changes made to the case design that were distinctive to its predecessors. The black acrylic bezel was introduced as well as noticeable changes to the hands. However, there were numerous much more subtle changes to come over the four following years, which are less easily identifiable, and that might only be differentiated by the length of the hands for example, or the scale on the bezel, with each modification only defined by the number after the hyphen in the reference number inscribed on the inside of the case back.

£ 12,000-18,000 € 13,900-20,800 US\$ 15,700-23,600

PROPERTY OF THE FAMILY OF THE ORIGINAL OWNER

ROLEX

EXPLORER II, 22 SPECIAL AIR SERVICE, REFERENCE 216570

MILITARY STAINLESS STEEL DUAL-TIME WRISTWATCH WITH DATE AND BRACELET
CIRCA 2010

Dial: black

Calibre: cal. 3187 automatic, 31 jewels

Case: stainless steel Oyster, screw-down crown and back

Case number: G'740'606

Closure: stainless steel Rolex Oyster bracelet with integrated folding clasp

Dimensions: 42mm diameter, bracelet circumference approximately 250mm

Signed: case, dial and movement

Accessories: Rolex Guarantee dated December 2012, Rolex user manual and presentation case

The British Special Air Service (SAS) was founded in 1941 as a Special Operations division of the British Army and has remained one of the most respected military organizations in the world. In spite of its absolute secrecy, the unit is rumoured to employ 500 active soldiers and is renowned for its extreme recruitment and training methods.

This Rolex Explorer II reference 216570 was part of a limited edition exclusively available to members of the SAS regiment in 2012. This Explorer II SAS edition is a fantastic illustration of the long-lasting relationship between Rolex and the military forces, making it an extremely desirable watch.

The present lot is part of that special series and has been preserved in like-new, unworn condition, retaining its original protective stickers. On the side of the case, the motto of the SAS, 'Who Dares Wins' is engraved. Furthermore, the case back is decorated with the SAS logo (a dagger with wings) and a personalised serial number bearing the original owner's initials.

£ 12,000-18,000 € 13,900-20,800 US\$ 15,700-23,600



ROLEX
ATTESTATION DE CHRONOMETRE

Pour les informations complémentaires concernant la GARANTIE, l'attestation de CHRONOMETRE et le Service Mondial Rolex, veuillez vous référer au manuel joint.

N° client	160
Réf. montre	216570
N° série	G740606
Modèle	OYSTER PERPETUAL

Le fonctionnement de cette montre pour la durée de deux ans à partir de la date d'achat. La présente garantie normale, la perte, le vol ou les dommages résultant d'une utilisation inappropriée. Toute pièce ou d'accessoires non fabriqués par ROLEX entraîne la fin de la garantie. Toute modification du modèle précisé ci-dessus a acquis le droit de porter le titre de Chronomètre Suisse



76



76

ROLEX

EXPLORER, REFERENCE 1016
STAINLESS STEEL WRISTWATCH WITH TROPICAL DIAL
CIRCA 1964

Dial: brown, tropical
Calibre: cal. 1560 automatic, 26 jewels
Movement number: D82'632
Case: stainless steel Oyster, screw-down crown and back
Case number: 1'053'589
Closure: unsigned brown alligator strap with unsigned stainless steel pin buckle
Dimensions: 36mm diameter
Signed: case, dial and movement
Accessories: none

Since its introduction in 1953 and the first summit ascent of the Everest on the same year, the Rolex Explorer has embodied the pioneering and adventurous spirit of the brand.

The most famous Explorer reference is arguably the 1016 which was produced between 1963 and 1989.

This present lot is very attractive, not only because it is an early example, but also thanks to the very rare tropical patina of the dial.

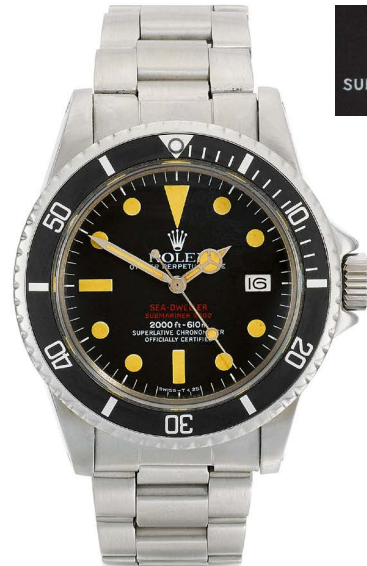
£ 8,000-12,000 € 9,300-13,900 US\$ 10,500-15,700



56

Buyers are liable to pay both the hammer price (as estimated above) and the buyer's premium together with any applicable taxes and Artist's Resale Right (which will depend on the individual circumstances). Refer to the Buying at Auction and VAT sections at the back of this catalogue for further information.

77



SEA-DWELLER
SUBMARINER 2000
2000 ft = 610m
SUPERLATIVE CHRONOMETER
OFFICIALLY CERTIFIED

77

PROPERTY OF THE ORIGINAL OWNER

ROLEX

SEA-DWELLER DOUBLE RED, REFERENCE 1665
STAINLESS STEEL WRISTWATCH WITH DATE AND
BRACELET
CIRCA 1975

Dial: black
Calibre: cal. 1570 automatic, 26 jewels
Movement number: D'950'215
Case: stainless steel Oyster, screw-down crown and back
Case number: 4'108'831
Closure: stainless steel Rolex Oyster bracelet with integrated folding clasp
Dimensions: 40mm diameter, bracelet circumference approximately 190mm
Signed: case, dial and movement
Accessories: none

Rolex officially launched the first version of the Sea Dweller reference 1665 in 1967. The highly technical diving watch was specifically engineered to sustain extreme depths. The helium escape valve was a revolution by allowing the accumulated gas to be released out of the case without harming the movement or dislocating the plexiglass. The present Rolex 1665 Double Red, dated from 1975, bears a Mark IV dial with a larger font '2000ft = 610m' script, a closed 6 for the depth rate and a wide oval base to the sharper coronet. The dial displays a striking patina to its indexes with matching hands and a period correct silver date disc. Another Mark IV feature, the full case number is engraved to the inside case back as opposed to the sole last three digits until 1974.

£ 14,000-20,000 € 16,200-23,100 US\$ 18,400-26,200



78

78

ROLEX

GMT MASTER, REFERENCE 16750
STAINLESS STEEL DUAL-TIME WRISTWATCH WITH DATE
AND BRACELET
CIRCA 1983

Dial: black

Calibre: cal. 3075 automatic, 27 jewels

Movement number: 0'949'235

Case: stainless steel Oyster, screw-down crown and back

Case number: 7'620'424

Closure: stainless steel Rolex Oyster bracelet with integrated folding clasp

Dimensions: 40mm diameter, bracelet circumference approximately 190mm

Signed: case, dial and movement

Accessories: additional black 24-unit bezel

For a note regarding the Rolex GMT Master reference 16750, please refer to lot 7.

£ 4,000-6,000 € 4,650-7,000 US\$ 5,300-7,900



79

79

PROPERTY OF THE FAMILY OF THE ORIGINAL OWNER

ROLEX

GMT MASTER GILT, REFERENCE 1675
STAINLESS STEEL DUAL-TIME WRISTWATCH WITH DATE
AND BRACELET
CIRCA 1964

Dial: black

Calibre: cal. 1560 automatic, 26 jewels

Movement number: 83'475

Case: stainless steel Oyster, screw-down crown and back, personalised engraving to the back

Case number: 1'191'619

Closure: stainless steel Rolex Oyster bracelet with integrated folding clasp

Dimensions: 40mm diameter, bracelet circumference approximately 200mm

Signed: case, dial and movement

Accessories: Rolex Guarantee dated 15 December 1964, Chronometer Certificate and 'Swimpruf' tag

The Rolex 1675 was introduced in 1959 and produced until 1980. It is the most famous GMT reference as well as one of the most sought-after models ever made by Rolex.

During its 21 years of production, the 1675 went through several evolutions of the case, the dial, movement and the bracelet.

This early 1675 from 1964 is fitted with an attractive gilt glossy dial. The gilt dials were produced until approximately 1967. The example present on this lot is the last generation, with tritium luminescent material and the Swiss -T. While the watch was worn everyday and enjoyed by its proud owner, it has survived with its original Guarantee, certificate and tag, a rarity for a watch from that period.

£ 6,000-8,000 € 7,000-9,300 US\$ 7,900-10,500

ROLEX

GMT MASTER EXCLAMATION POINT DIAL AND EAGLE BEAK CROWN GUARDS, REFERENCE 1675
STAINLESS STEEL DUAL-TIME WRISTWATCH WITH DATE
AND TROPICAL DIAL
CIRCA 1960

Dial: brown, tropical

Calibre: cal. 1560 automatic, 25 jewels

Movement number: D21'792

Case: stainless steel Oyster, screw-down crown and back

Case number: 623'538

Closure: brown unsigned suede strap with unsigned stainless steel pin buckle

Dimensions: 40mm diameter

Signed: case, dial and movement

Accessories: none

Superseding the reference 6542, the Rolex GMT Master reference 1675 had a long production run spanning from 1959 to 1980. This particular watch was manufactured in around 1960, making it an early 1675.

These early pieces had cases with eagle beak guards as opposed to later rectangular crown guards. Also nicknamed 'cornino', these cases are extremely sought-after by collectors. The faded bezel perfectly complements the case.

The dial of this watch gathers some most attractive particularities.

Indeed, this dial is characteristic of the early production of the 1675.

First of all, it is a gilt glossy dial, referring to the gilt lettering that was used during the 8 first years of production.

Secondly, it has the small GMT hand which is another feature of the early GMT production.

It is also a 'Swiss only' dial as per the signature at 6 o'clock, which indicates that the dial had radium as luminescent material in opposition to the tritium used from 1963 by Rolex.

Furthermore, the gilt glossy Swiss only dial has a small luminescent dot below the 6 o'clock index. These so-called exclamation point dials were produced during a short period between 1960 and 1963, making them highly desirable among aficionados. It is usually believed that it was used to indicate the lower radioactivity of the luminescent material.

Nonetheless, the most striking element of the dial is its even and extremely desirable natural tropical patina. The type of coating originally designed to protect the dial from UV radiation and prevent its discolouration has instead turned the dial colour to an attractive warm brown over time.

A 'standard' tropical dial is extremely rare and desirable already but this all matching tropical gilt glossy Swiss only exclamation point dial with small GMT hand and cornino case is a true dream for a collector.

£ 50,000-100,000

€ 58,000-116,000 US\$ 65,500-131,000





PROPERTY OF THE ORIGINAL OWNER

ROLEX

DAYTONA, REFERENCE 6265
STAINLESS STEEL CHRONOGRAPH WRISTWATCH WITH
BRACELET
CIRCA 1971

Dial: black
Calibre: cal. 727 manual winding, 17 jewels
Case: stainless steel Oyster, screw-down crown, pushers and
back, personalised engraving to the back
Case number: 2'788'789
Closure: stainless steel Rolex Oyster bracelet with integrated
folding clasp
Dimensions: 37mm diameter, bracelet circumference
approximately 180mm
Signed: case, dial and movement
Accessories: Rolex Guarantee dated 3 July 1972 and
presentation case

The production of the references 6263 and the 6265 started in 1969. This piece is characteristic of the early production: the dial is without sigma signs at 6 o'clock or big red Daytona above the subsidiary dial for hour register present on the later production. This watch is overall in very appealing condition as it still has its original screw-down pushers, Mark I bezel, 7835 bracelet with 271 endlinks and the case still retains good proportions.

These references stayed in production until 1987 and were the last Daytona references powered by a manual-wound chronograph movement. These references were fitted with the famous caliber Valjoux 727, which was an evolution from the caliber 722-1 present on some 6239, 6241 and 6240. To further enhance its performance, Rolex replaced the balance to increase the precision by increasing vibrations from 18,000 to 21,000. This movement was eventually replaced by the automatic 'Zenith' chronograph caliber 4030 in 1988. This is the very first time that this watch has appeared on the market since it was bought by its only owner on 3 July 1972. The watch comes with the original Rolex Guarantee stamped by a retailer in Bermuda. Passionate about the marine-world, the original owner used his watch while crossing the seas, taking part in regattas and yachting, as pictured.

£ 35,000-55,000
€ 40,400-63,500 US\$ 45,800-72,000



The original owner wearing the presented lot while sailing



2788789

entirely manufactured by Rolex, Bienne and Geneva, Switzerland. It has been minutely examined and regulated and certified to be in perfect condition.

THE ROLEX WATCH COMPANY LTD. GUARANTEES the dependable functioning of this watch for the period of one year, damage resulting from ill treatment excepted.

John S. & E. Crissan
Jewellers
Bermuda

Purchased from: *July 1972*

Date of sale: *July 1972* which may be necessary during the guarantee period to return your Rolex to the jeweller who supplied any of the official Rolex service stations.

is valid only if duly completed at time

11.618.930-971-100 PRINTED IN SWITZERLAND

Guarante

FROM THE FAMILY OF THE ORIGINAL OWNER

ROLEX

SUBMARINER EXPLORER DIAL WITH EXCLAMATION POINT AND POINTED CROWN GUARDS, REFERENCE 5513 STAINLESS STEEL WRISTWATCH WITH BRACELET CIRCA 1962

Dial: black

Calibre: cal. 1530 automatic, 26 jewels

Movement number: 77'455

Case: stainless steel Oyster, screw-down crown and back

Case number: 765'454

Closure: stainless steel Rolex Oyster bracelet with integrated folding clasp

Dimensions: 40mm diameter, bracelet circumference approximately 195mm

Signed: case, dial and movement

Accessories: Rolex Guarantee dated 31 July 1964, invoice, insurance and service invoices

The Rolex Submariner is a landmark in wristwatch history which has fascinated the watch collecting community since its creation.

Early Submariner models have long been elevated to a treasure status by enthusiasts. Nonetheless, some treasures are more coveted than others. Due to its rarity and its instantly recognisable look, the 'Submariner Explorer dial' is certainly one of the most sought-after gems.

Only a few Rolex Submariner references from the early production were fitted with this special '3-6-9' dial, such as the references 6538, 6200, 5510, 5512 and the 5513. The 'Explorer

dial' or '3-6-9 dial' is named after its similar layout to the Explorer design as opposed to the standard Submariner dial with the usual round, baton and triangle indexes.

The present 5513, dating from 1962, when this model was introduced, is a most attractive example as it combines an Submariner Explorer dial with other highly collectable particularities.

Firstly, the depth rating is different to the standard meters first. Indeed, the 'm' for meters is missing and the FT is written using a different, non italic, font. Furthermore, it is an exclamation point dial. Indeed, there is a luminescent dot underneath the index at 6 o'clock, indicating the lower radioactivity of the dial. The case is also characteristic of that period as it is equipped with clearly defined pointed crown guards (or PCG).

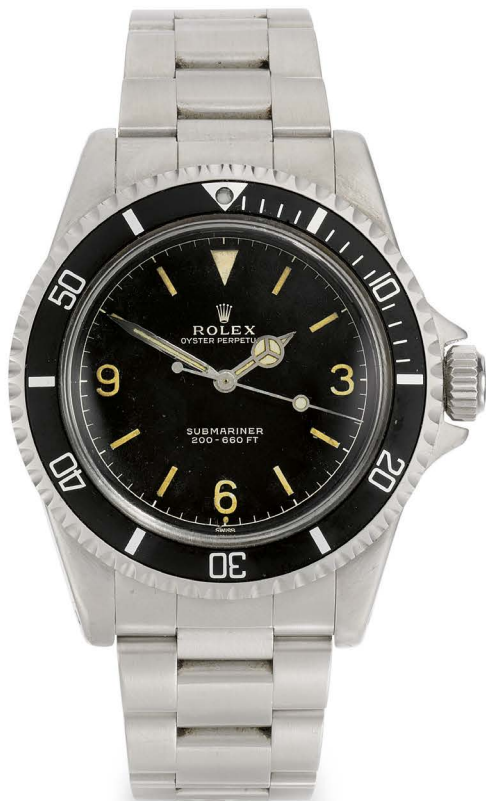
The watch alone could be considered a dream for a collector.

However, in addition, the present piece is accompanied by its original guarantee stamped by Watches of Switzerland as well as an extensive number of receipts from the day of purchase. These include a watch insurance document and all the receipts from services carried out on this extraordinary timepiece making this an especially complete and desirable piece. In addition to this, the watch has been kept in the family of the original owner and was until today, unknown to the market.

This extraordinary and fresh to the market piece, with such an exceptional dial and case and fully documented history represents a truly unique opportunity to acquire a wonderful treasure.

£ 60,000-90,000

€ 69,500-104,000 US\$ 78,500-118,000



PROPERTY OF THE ORIGINAL OWNER

ROLEX

DAYTONA PAUL NEWMAN, REFERENCE 6262
STAINLESS STEEL CHRONOGRAPH WRISTWATCH WITH
BRACELET
CIRCA 1970

Dial: white

Calibre: cal. 727 manual winding, 17 jewels

Case: stainless steel Oyster, screw-down crown and back

Case number: 2'475'545

Closure: stainless steel Rolex Oyster bracelet with integrated folding clasp

Dimensions: 36.5mm diameter, bracelet circumference approximately 200mm

Signed: case, dial and movement

Accessories: Rolex Guarantee dated 1971, invoice and tax papers

This exceptional Rolex Daytona Paul Newman comes with its original guarantee stamped by Bucherer, original invoice also signed by the famous retailer as well as the French tax document from when the watch accompanied the owner back to France on the day of the purchase.

This most attractive piece is fitted with an elegant panda dial that has survived in excellent and unrestored condition. The contrast of the white dial with the black subsidiary dials and outer track is striking and perfectly balanced with the warm patina of the lume plots and hands. Furthermore, the watch is presented at auction on behalf of its original and only owner, who received it as a birthday present nearly 50 years ago, making this an extremely rare opportunity for a discerning collector to acquire a superb and very complete piece. For a technical note about the reference 6262, please refer to lot 48.

£ 95,000-190,000

€ 110,000-219,000 US\$ 125,000-249,000



TAXES
ayant fait l'objet
verbale



SOULAS
2, rue de la Carbonnerie
Cellier

DÉSIGNATION DES MARCHANDISES

MONTANT
des droits
et taxes

d'origine : Suisse
Une montre en acier
Rolex Chronographe
n° 6262/ac
1.000fr

BUCHERER
PORTANTE MAISON D'HORLOGERIE ET DE JOAILLER
Genève
SALE LUGANO LOCARNO ST. MORITZ INTERLAKEN BUR
Tél. 1

Bernard

CCA	CCD		
P. CH.	P. P. CH	11	02
		GT	S'F

Chronographe

666
043
503

77



ROLEX
OYSTER

GUARANTEE

The Rolex Watch Company Limited guarantee the dependable functioning of this Rolex Oyster for the period of one year from the date of purchase, damage resulting from ill-treatment excepted.

This watch has been entirely manufactured by Rolex, Bienne and Geneva. It has been minutely examined and regulated and is certified to be in perfect condition.

IMPORTANT:
Should your Rolex require attention during the guarantee period, please return it to the jeweller who supplied it or to any of the official Rolex Service stations listed in this booklet.

Name and address of purchaser

Jeweller's name and address
**BUCHERER
GENÈVE**

Date of purchase
14. 7. 71

ROLEX
OYSTER

This guarantee is valid only if signed and dated by the jeweller at the time of purchase

PROPERTY OF THE FAMILY OF THE ORIGINAL OWNER

ROLEX

RETAILED BY DOBBIES LTD NAIROBI, MONOBLOCCO,
REFERENCE 3525

STAINLESS STEEL CHRONOGRAPH WRISTWATCH,
FORMER PROPERTY OF A MEMBER OF THE SAS
REGIMENT
CIRCA 1946

Dial: off-white

Calibre: cal. 23 manual winding, 17 jewels

Case: stainless steel Oyster, screw-down crown and back

Case number: 386'301

Closure: brown unsigned calfskin strap with unsigned stainless steel pin buckle

Dimensions: 35mm diameter

Signed: case, dial and movement

Accessories: none

This Rolex chronograph reference 3525 is unlike any other seen on the market before. Not only is this watch in fantastic condition and a rare piece by its own merit, but the provenance is equally fascinating.

The original owner, Anthony (Tony) O'Brien, had a remarkable military career and has even been mentioned in books dedicated to the Luftwaffe Prisoner of War camps in Poland and Germany such as, *'The Wire and Beyond'* by David W. Fraser and, *'Stalag Luft III – An official History of the 'Great Escape' PoW camp'*, by Howard Grehan and Howard Tuck.

Anthony O'Brien originally enlisted into the Kenyan Army in 1937, and later served in the King's African Rifles as a commissioned officer in Nyasaland and Abyssinia. O'Brien then volunteered as a Sergeant for the newly formed British first SAS Brigade, 8th Army, Middle-Eastern Command, where he saw active duty again in the North Africa Campaign, predominantly in Libya. He was captured behind enemy lines where he narrowly avoided execution for being SAS by convincing the enemy he was in the RAF. He was instead transported through Italy to the notorious Prisoner of War (PoW) camps (Stalag Luft III, Stalag Luft VI, Stalag Luft I and Stalag Luft 357) used for predominantly allied air force personnel.



The original owner, Sergeant Anthony O'Brien wearing his SAS uniform

Perhaps O'Brien's most impressive and famous undertaking however was his active involvement in the *'Tally-Ho'* escape committee where he was in charge of tunnelling operations and camp security at Stalag Luft III prison before he was eventually liberated in 1945. It was these events in Stalag Luft III that went on to inspire the internationally famous movie, *'The Great Escape'*.

After the war he returned to Nairobi where he got married in 1946 and acquired the present Rolex 3525. He then moved to Uganda to farm coffee and later became a professional hunter in Kenya and Tanzania.

The Reference 3525 is well-known for having been supplied to British prisoners by Rolex during WWII. This may explain why O'Brien chose this model that he could have seen on the wrist of other RAF prisoners, hence celebrating the end of this dark period and his continued life in Kenya.

The 3525 Monoblocco was the first Rolex chronograph fitted in an Oyster case. The watch is divided into two main series. The first one (1939-1942) has the reference and case number engraved on the outside case back. The second series (1942-1946) can be identified with the reference number present on the inside case back and the case number engraved between the lugs.

The present example is a superb specimen of the second series. The case number dates the watch to 1946, the very end of the production of the 3525. The dial is also characteristic of the very last pieces produced. The Rolex Oyster chronograph signature is written with a different font and straight with Rolex on its own line above Oyster chronograph, very similar to that of the reference 4500. The vast majority of the production bear a curved Rolex Oyster signature with 'Chronograph' written underneath.

This particular piece is further distinguished by its attractive patinated dial bearing the rare and sought-after, *'Dobbies Ltd Nairobi'* signature. Another striking quality of this lot is the extremely well preserved case. Whilst the edge of the inside of the case shows some signs of corrosion as often observed on pieces that stayed in the humid African climate, the lugs will instantly please the eyes of an educated collector with their very sharp edges, looking similar to when the watch was originally purchased. The timepiece still has its original Patent Oyster crown and its case back has very few watchmaker marks, underlining the very original condition of this splendid watch.

Preserved in the family of the original owner until today, this present lot is a rare opportunity to acquire both a historically interesting and high quality piece.

£ 30,000-60,000

€ 34,600-69,500 US\$ 39,300-78,500



DOBBIES LTD.
NAIROBI



ROLEX

DAYTONA RAINBOW, REFERENCE 116595RBOW
PINK GOLD DIAMOND AND SAPPHIRE-SET
CHRONOGRAPH WRISTWATCH WITH DIAMOND,
SAPPHIRE-SET DIAL AND CASE WITH BRACELET
CIRCA 2018

Dial: diamond and sapphire-set

Calibre: cal. 4130 automatic, 44 jewels

Movement number: V8'A21'058

Case: 18ct pink gold Oyster, sapphire and diamond-set, screw-down crown, pushers and back

Case number: 5T'258'450

Closure: 18ct pink gold Rolex Oyster bracelet with integrated folding clasp

Dimensions: 40mm diameter, bracelet circumference approximately 200mm

Signed: case, dial and movement

Accessories: Rolex Guarantee dated October 11th, 2018, Rolex user manual, chronometer tag and presentation case

There are very few watches that can assume an iconic status, even after several decades. The Daytona Rainbow has instantly been recognized as a legend by collectors.

The model was first introduced in 2012 in yellow gold and later in white gold. In 2018, Rolex revealed the Everose version, the pink gold edition. This last version is considered by many as the most beautiful, as the warm pink gold perfectly complements and reaffirms the sapphire-set rainbow bezel. The pink gold edition also introduced the baguette rainbow

indexes as opposed to the simpler, brilliant diamond-set indexes of the two previous versions. The model is sometimes further obtainable with a black or a rarer fully pavé diamond-set dial, such as the present lot.

Only a handful of these pieces are produced each year by Rolex. This is due to the difficulty in sourcing perfectly calibrated sapphires of the right colour to construct the spectacular rainbow beautifully adorning the bezel.

The Rolex tradition of setting precious stones on the Daytona started in the 1980's. This began with some rare 6239 examples with brilliant diamond-set bezels and the famous reference 6270 with a baguette diamond-set bezel. Rolex continued experimenting with the use of precious stones and special dials during the Zenith Daytona era as well as with the introduction of the in-house movement, the calibre 4130 that was used within the Saco model, for example. Nonetheless, never before the Rainbow did a Daytona go so far in the pursuit of a bold and uncompromising, yet timeless model.

Not only is the Rainbow, especially in pink gold, the ultimate modern Daytona, but it is without doubt one of the most exceptional pieces ever produced by Rolex.

This watch, offered in excellent condition and with its complete set is the first of its kind to appear at auction. It is the first pink gold version to be presented for sale with its original sublime and rare pavé diamond-set dial.

£ 140,000-240,000

€ 162,000-277,000 US\$ 184,000-314,000





“I design interiors that blend modernity with classicism. My starting point is always our client’s collection, or a single treasured artwork, which inspires my overall conception of the project.”

DOUGLAS MACKIE

Create a Legacy.

Sotheby's Private Sales Services source rare works of art and valued objects at a fixed price and discreetly broker the sale outside the restrictions of the auction calendar.

34-35 NEW BOND STREET, LONDON W1A 2AA
ENQUIRIES +44 (0)20 7293 5589 JAMESV.MACDONALD@SOTHEBYS.COM
SOTHEBYS.COM/PRIVATE SALES #SOTHEBYSPRIVATE SALES



DOWNLOAD SOTHEBY'S APP
FOLLOW US @SOTHEBYS

Sotheby's EST. 1744

Know Your Worth.

Sotheby's Valuations Services provide bespoke valuations across all collecting categories that are recognised around the world by financial institutions, insurance brokers and government agencies.

34-35 NEW BOND STREET, LONDON W1A 2AA
ENQUIRIES +44 (0)20 7293 6422 VALUATIONS@SOTHEBYS.COM
[SOTHEBYS.COM/VALUATIONS](https://www.sothebys.com/valuations) #SOTHEBYSVALUATIONS

© DOUGLAS MACKIE © SIMON UPTON © THE ESTATE OF ADRIAN HEATH



DOWNLOAD SOTHEBY'S APP
FOLLOW US @SOTHEBYS



Upcoming Watch Auctions 2019

24 March

Watches, Dubai

25 March – 1 April

Watches Online

3 April

Important Watches, Hong Kong

16 April

Watches, London

12 May

Important Watches, Geneva

31 May – 13 June

Watches Online

4 June

Important Watches, New York

8 – 17 July

Watches Online

ENQUIRIES

GENEVA +41 22 908 48 13

HONG KONG +852 2822 8117

NEW YORK +1 212 606 7184

LONDON +44 (0)20 7293 5793

SOTHEBYS.COM/WATCHES

#SOTHEBYSWATCHES

Patek Philippe

A possibly unique, fine and very rare yellow gold openface perpetual calendar minute repeating split seconds chronograph watch with moon phases, ref. 767, movement made in 1922 and cased in 1959

Estimate HK\$1,200,000–2,000,000 / US\$153,600–256,000



DOWNLOAD SOTHEBY'S APP
FOLLOW US @SOTHEBYSWATCHES

Sotheby's EST. 1744 Wine



decant.

wine is a never-ending journey.

sothebyswine.com

AUCTION • RETAIL • ADVISORY
New York Hong Kong London



A SPECTACULAR
88.22 CARAT OVAL
BRILLIANT DIAMOND

Upcoming Jewellery Auctions 2019

8 – 15 March

Jewels Online

21 – 28 March

Jewels Online

2 April

Magnificent Jewels and Jadeite
Hong Kong

17 April

Fine Jewels, New York

18 April

Magnificent Jewels, New York

30 April

Fine Jewels, Paris

14 May

Magnificent Jewels and Noble Jewels
Geneva

21 – 30 May

Jewels Online

5 June

Fine Jewels, London

13 – 20 June

Jewels Online

24 June – 2 July

Jewels Online

18 – 25 July

Jewels Online

ENQUIRIES

GENEVA +41 22 908 4849

NEW YORK +1 212 606 7392

SOTHEBYS.COM/JEWELS

HONG KONG +852 2822 8112

LONDON +44 (0)20 7293 6409

#SOTHEBYSJEWELS





Absentee/Telephone Bidding Form

Sale Number L19070 | **Sale Title** WATCHES | **Sale Date** 16 APRIL 2019

Please see the important information regarding absentee bidding on the reverse of this form. Forms should be completed in ink and emailed, mailed or faxed to the Bid Department at the details below.

SOTHEBY'S ACCOUNT NUMBER (IF KNOWN)

TITLE FIRST NAME LAST NAME

COMPANY NAME

ADDRESS

POSTAL CODE COUNTRY

DAYTIME PHONE MOBILE PHONE FAX

EMAIL

Please indicate how you would like to receive your invoices: Email Post/Mail

Telephone number during the sale (telephone bids only)

Please write clearly and place your bids as early as possible, as in the event of identical bids, the earliest bid received will take precedence. Bids should be submitted in pounds sterling and all bid requests should be submitted at least 24 hrs before the auction. Telephone bids are offered for lots with a minimum low estimate of £3,000.

LOT NUMBER	LOT DESCRIPTION	MAXIMUM STERLING PRICE OR ✓ FOR PHONE BID (EXCLUDING PREMIUM AND TAX)
		£
		£
		£
		£
		£
		£
		£
		£
		£
		£

We will send you a shipping quotation for this and future purchases unless you select one of the check boxes below. Please provide the name and address for shipment of your purchases, if different from above.

NAME AND ADDRESS

POSTAL CODE COUNTRY

- I will collect in person I authorise you to release my purchased property to my agent/shipper (provide name)
- Send me a shipping quotation for purchases in this sale only

I agree to be bound by Sotheby's "Conditions of Business" and the information set out overleaf in the Guide for Absentee and Telephone Bidders, which is published in the catalogue for the sale. Sotheby's Group companies may use your details to contact you about Sotheby's products or services, events or promotions and other activities that may be of interest to you. If you would prefer not to be contacted in this way, please tick the box below.

- I do not wish to receive promotional communications from Sotheby's

SIGNATURE

PRINT NAME DATE

Guide for Absentee and Telephone Bidders

If you are unable to attend an auction in person, you may give Sotheby's Bid Department instructions to bid on your behalf by completing the form overleaf. This service is confidential and available at no additional charge.

General

Before the Auction We will try and purchase the lot(s) of your choice for the lowest price possible (dependent on the reserve price and other bids) and never for more than the maximum bid amount you indicate. Where appropriate, your bids will be rounded down to the nearest amount consistent with the auctioneer's bidding increments.

Please place your bids as early as possible, as in the event of identical absentee bids the earliest received will take precedence. Bids should be submitted at least twenty-four hours before the auction.

If bidding by telephone, we suggest that you leave a maximum bid which we can execute on your behalf in the event we are unable to reach you.

Please refer to Condition 5 of the Conditions of Business printed in this catalogue.

After the Auction Successful bidders will receive an invoice detailing their purchases and giving instructions for payment and clearance of goods.

If you are bidding for items marked with a 'W' in the catalogue, we recommend you contact us on the afternoon of the sale to check whether you have been successful. These items will be sent to Sotheby's Greenford Park Fine Art Storage Facility immediately following the sale and therefore buyers are requested to arrange early collection of their goods as they will be subject to handling and storage charges after 30 days.

Without Reserve Lots Where a lot is offered "without reserve" absentee bids will be executed at a minimum of 10% of the low estimate.

Completing This Form

This form should be used for one sale only. Please indicate the sale number, sale title and sale date in the space provided at the top of the form if it is not already pre-populated.

Please record accurately the lot numbers, descriptions and the maximum hammer price you are willing to pay for each lot. Instructions to "BUY" or unlimited bids will not be accepted.

Bids must be numbered in the same order as the lots appear in the catalogue.

Alternate bids for items can be made by placing the word "OR" between lot numbers. This means if your bid on an early lot is successful, we will not continue to bid on subsequent lots for you. Or, if your early bids are unsuccessful, we will continue to execute bids for the remaining lots listed on your absentee bidding form.

If you are arranging a telephone bid, please clearly specify the telephone number on which you can be reached at the time of the sale, including the country code. We will call you from the saleroom shortly before the relevant lot is offered.

New Clients

If you have opened a new account with Sotheby's since 1 December 2002, and have not already provided appropriate identification, you will be asked to present documentation confirming your identity before your property or sale proceeds can be released to you. We may also contact you to request a bank reference.

Please provide government issued photographic identification such as a passport, identity card or driver's licence and confirm your permanent address.

Conditions of Absentee & Telephone Bidding

Please note that the execution of absentee and telephone bids is offered as an additional service for no extra charge. Such bids are executed at the bidder's risk and undertaken subject to Sotheby's other commitments at the time of the auction. Sotheby's therefore cannot accept liability for any reasonable error or failure to place such bids.

All bids are subject to the Conditions of Business applicable to the sale printed in the sale catalogue. Buyer's premium in the amount stated in paragraph 2 of Buying at Auction in the back of the sale catalogue will be added to the hammer price as part of the total purchase price, plus any applicable taxes and charges.

Bids will be executed for the lowest price as is permitted by other bids or reserves.

Where appropriate your written bids will be rounded down to the nearest amount consistent with the auctioneer's bidding increments.

Payment

In the event that you are successful, payment is due immediately after the sale unless otherwise agreed in advance. Payment may be made by bank transfer, debit and credit cards (up to £30,000 per sale, online or using Sotheby's Mobile App), cheque or cash (up to US\$10,000 equivalent). You will be sent full details on how to pay with your invoice.

Data Protection

Sotheby's will hold and process your personal information and may share it with another Sotheby's Group company for use as described in, and in line with, Sotheby's Privacy Policy published on Sotheby's website at www.sothebys.com or available on request by email to enquiries@sothebys.com.

BUYING AT AUCTION

The following pages are designed to give you useful information on how to buy at auction. Sotheby's staff as listed at the front of this catalogue will be happy to assist you. However, it is important that you read the following information carefully and note that Sotheby's act for the seller. Bidders' attention is specifically drawn to Conditions 3 and 4, which require them to investigate lots prior to bidding and which contain specific limitations and exclusions of the legal liability of Sotheby's and sellers. The limitations and exclusions relating to Sotheby's are consistent with its role as auctioneer of large quantities of goods of a wide variety and bidders should pay particular attention to these Conditions. Prospective bidders should also consult www.sothebys.com for the most up to date cataloguing of the property in this catalogue.

Buyer's Premium A buyer's premium will be added to the hammer price and is payable by the buyer as part of the total purchase price. The buyer's premium is 25% of the hammer price up to and including £300,000; 20% on any amount in excess of £300,000 up to and including £3,000,000; and 13.9% on any remaining amount in excess of £3,000,000. These rates are exclusive of any applicable VAT.

1. BEFORE THE AUCTION

Catalogue Subscriptions If you would like to take out a catalogue subscription, please ring +44 (0)20 7293 5000.

Pre-sale Estimates Pre-sale estimates are intended as a guide for prospective buyers. Any bid between the high and low pre-sale estimates would, in our opinion, offer a chance of success. However, lots can realise prices above or below the pre-sale estimates.

It is advisable to consult us nearer the time of sale as estimates can be subject to revision. The estimates printed in the auction catalogue do not include the buyer's premium or VAT.

Pre-sale Estimates in US Dollars and Euros Although the sale is conducted in pounds sterling, the pre-sale estimates in some catalogues are also printed in US dollars and/or euros. The rate of exchange is the rate at the time of production of this catalogue. Therefore, you should treat the estimates in US dollars or euros as a guide only.

Condition of Lots Prospective buyers are encouraged to inspect the property at the pre-sale exhibitions. Solely as a convenience, Sotheby's may also provide condition reports. The absence of reference to the condition of a lot in the catalogue description does not imply that the lot is free from faults or imperfections. Please refer to Condition 3 of the Conditions of Business for Buyers printed in this catalogue.

Electrical and Mechanical Goods All electrical and mechanical goods are sold on the basis of their artistic and decorative value only, and should not be assumed to be operative. It is essential that prior to

any intended use, the electrical system is checked and approved by a qualified electrician.

Provenance In certain circumstances, Sotheby's may print in the catalogue the history of ownership of a work of art if such information contributes to scholarship or is otherwise well known and assists in distinguishing the work of art. However, the identity of the seller or previous owners may not be disclosed for a variety of reasons. For example, such information may be excluded to accommodate a seller's request for confidentiality or because the identity of prior owners is unknown given the age of the work of art.

2. DURING THE AUCTION

Conditions of Business The auction is governed by the Conditions of Business and Authenticity Guarantee. These apply to all aspects of the relationship between Sotheby's and actual and prospective bidders and buyers. Anyone considering bidding in the auction should read them carefully. They may be amended by way of notices posted in the saleroom or by way of announcement made by the auctioneer.

Bidding at Auction Bids may be executed in person by paddle during the auction, in writing prior to the sale, by telephone or online.

Auction speeds vary, but average between 50 and 120 lots per hour. The bidding steps are generally in increments of approximately 10% of the previous bid.

Please refer to Conditions 5 and 6 of the Conditions of Business for Buyers printed in this catalogue.

Bidding in Person To bid in person, you will need to register for and collect a numbered paddle before the auction begins. Proof of identity will be required. If you have a Sotheby's Client Card, it will facilitate the registration process.

Should you be the successful buyer of a lot, please ensure that your paddle can be seen by the auctioneer and that it is your number that is called out. Should there be any doubts as to price or buyer, please draw the auctioneer's attention to it immediately.

All lots sold will be invoiced to the name and address in which the paddle has been registered and cannot be transferred to other names and addresses.

Please do not mislay your paddle; in the event of loss, inform the Sales Clerk immediately. At the end of the sale, please return your paddle to the registration desk.

Absentee, Telephone and Internet Bids If you cannot attend the auction, we will be happy to execute written bids on your behalf or you can bid on the telephone for lots with a minimum low estimate of £3,000 or you can bid online using BIDnow. A bidding form and more information can be found at the back of this catalogue.

Online Bidding If you cannot attend the auction, it may be possible to bid online via BIDnow, eBay, Invaluable or other Online Platforms for selected sales. This service

is free and confidential. For information about registering to bid via BIDnow, please refer to sothebys.com. For information about registering to bid on eBay, please see www.ebay.com/sothebys. For information about registering to bid on Invaluable, please see www.invaluable.com/invaluable/help.cfm. Bidders using any online platform are subject to the Additional Terms and Conditions for Live Online Bidding, which can be viewed at sothebys.com, as well as the Conditions of Business applicable to the sale.

Consecutive and Responsive Bidding

The auctioneer may open the bidding on any lot by placing a bid on behalf of the seller. The auctioneer may further bid on behalf of the seller, up to the amount of the reserve, by placing consecutive or responsive bids for a lot. Please refer to Condition 6 of the Conditions of Business for Buyers printed in this catalogue.

Interested Parties Announcement In situations where a person who is allowed to bid on a lot has a direct or indirect interest in such lot, such as the beneficiary or executor of an estate selling the lot, a joint owner of the lot, or a party providing or participating in a guarantee of the lot, Sotheby's will make an announcement in the saleroom that interested parties may bid on the lot. In certain instances, interested parties may have knowledge of the reserves.

Employee Bidding Sotheby's employees may bid only if the employee does not know the reserve and fully complies with Sotheby's internal rules governing employee bidding.

US Economic Sanctions The United States maintains economic and trade sanctions against targeted foreign countries, groups and organisations. There may be restrictions on the import into the United States of certain items originating in sanctioned countries, including Burma, Cuba, Iran, North Korea and Sudan. The purchaser's inability to import any item into the US or any other country as a result of these or other restrictions shall not justify cancellation or rescission of the sale or any delay in payment. Please check with the specialist department if you are uncertain as to whether a lot is subject to these import restrictions, or any other restrictions on importation or exportation.

3. AFTER THE AUCTION

Payment Payment is due immediately after the sale and may be made by Sterling Wire Transfer or Sterling Cheque. Payments by Sterling Cash and by Credit/Debit Cards are also accepted subject to certain restrictions and/or surcharges – please see below.

- It is against Sotheby's general policy to accept single or multiple related payments in the form of cash or cash equivalents in excess of the local currency equivalent of US\$10,000.
- It is Sotheby's policy to request any new clients or buyers preferring to make a cash payment to provide: proof of identity (by providing some form of government issued identification containing a photograph, such as a

passport, identity card or driver's licence) and confirmation of permanent address. Thank you for your co-operation.

Cheques should be made payable to Sotheby's. Although personal and company cheques drawn in pounds sterling on UK banks are accepted, you are advised that property will not be released until such cheques have cleared unless you have a pre-arranged Cheque Acceptance Facility. Forms to facilitate this are available from the Post Sale Services Department.

Bank transfers Our bank account details are shown on our invoices. Please include your name, Sotheby's account number and invoice number with your instructions to your bank. Please note that we reserve the right to decline payments received from anyone other than the buyer of record and that clearance of such payments will be required. Please contact our Post Sale Services Department if you have any questions concerning clearance.

Card payment Sotheby's accepts payment by Visa, MasterCard, American Express and CUP credit and debit cards. Card payments may not exceed £30,000 per sale. All cards are accepted in person at Sotheby's premises at the address noted in the catalogue. With the exception of CUP, card payments may also be made online at <http://www.sothebys.com/en/invoice-payment.html> or by calling Post Sale Services at +44 (0)20 7293 5220.

We reserve the right to seek identification of the source of funds received.

The Conditions of Business require buyers to pay immediately for their purchases. However, in limited circumstances and with the seller's agreement, Sotheby's may grant buyers it deems creditworthy the option of paying for their purchases on an extended payment term basis. Generally credit terms must be arranged prior to the sale. In advance of determining whether to grant the extended payment terms, Sotheby's may require credit references and proof of identity and residence.

Collection It is Sotheby's policy to request proof of identity on collection of a lot. Lots will be released to you or your authorised representative when full and cleared payment has been received by Sotheby's. If you are in doubt about the location of your purchases, please contact the Sale Administrator prior to arranging collection. Removal, storage and handling charges may be levied on uncollected lots. Please refer to Condition 7 of the Conditions of Business for Buyers printed in this catalogue.

Storage Storage and handling charges may apply. For information concerning post sale storage and charges, please see Sotheby's Greenford Park, Storage and Collection Information at the back of this catalogue. Please refer to Condition 7 of the Conditions of Business for Buyers printed in this catalogue.

All purchases remaining at our New Bond Street premises 90 days after the sale will be transferred to Sotheby's Greenford Park Fine Art Storage (see Sotheby's Greenford Park, Storage and Collection information). All such purchases

will be subject to further storage and handling charges from this point.

Loss or Damage Buyers are reminded that Sotheby's accepts liability for loss or damage to lots for a maximum period of thirty (30) days after the date of the auction. Please refer to Condition 7 of the Conditions of Business for Buyers printed in this catalogue.

Shipping Sotheby's offers a comprehensive shipping service. Except if otherwise indicated in this Buying At Auction Guide, our Shipping Department can advise buyers on exporting and shipping property, and arranging delivery.

For assistance please contact:
Post Sale Services (Mon-Fri 9am to 5pm)
Tel +44 (0)20 7293 5220
Fax +44 (0)20 7293 5910
Email: ukpostsaleservices@sothebys.com

We will send you a quotation for shipping your purchase(s). Transit risk insurance may also be included in your quotation. If the quotation is accepted, we will arrange the shipping for you and will despatch the property as soon as possible after receiving your written agreement to the terms of the quotation, financial release of the property and receipt of any export licence or certificates that may be required. Despatch will be arranged at the buyer's expense. Sotheby's may charge an administrative fee for arranging the despatch.

All shipments should be unpacked and checked on delivery and any discrepancies notified immediately to the party identified in your quotation and/or the accompanying documentation.

Export The export of any lot from the UK or import into any other country may be subject to one or more export or import licences being granted. It is the buyer's responsibility to obtain any relevant export or import licence. The denial of any licence required or delay in obtaining such licence cannot justify the cancellation of the sale or any delay in making payment of the total amount due.

Sotheby's, upon request and for an administrative fee, may apply for a licence to export your lot(s) outside the UK

- An **EU Licence** is necessary to export cultural goods subject to the EU Regulation on the export of cultural property (EEC No. 3911/92, Official Journal No. L395 of 31/12/92) from the European Community.
- A **UK Licence** is necessary to move cultural goods valued at or above the relevant UK Licence limits from the UK.

For export outside the European Community, an EU Licence will be required for most items over 50 years of age with a value of over £41,018. The following is a selection of categories of items for which other value limits apply and for which an EU Licence may be required. It is not exhaustive and there are other restrictions.

EU Licence Thresholds
Archaeological objects
EU LICENCE THRESHOLD: ZERO
Elements of artistic, historical or religious monuments

EU LICENCE THRESHOLD: ZERO
Manuscripts, documents and archives (excluding printed matter)
EU LICENCE THRESHOLD: ZERO
Architectural, scientific and engineering drawings produced by hand
EU LICENCE THRESHOLD: £12,305
Photographic positive or negative or any assemblage of such photographs
EU LICENCE THRESHOLD: £12,305
Textiles (excluding carpets and tapestries)
EU LICENCE THRESHOLD: £41,018
Paintings in oil or tempera
EU LICENCE THRESHOLD: £123,055
Watercolours, gouaches and pastels
EU LICENCE THRESHOLD: £24,611
Prints, Engravings, Drawings and Mosaics
EU LICENCE THRESHOLD: £12,305

There are separate thresholds for exporting within the European Community. A UK Licence will be required for most items over 50 years of age with a value of over £65,000. Some exceptions are listed below:-

UK Licence Thresholds
Photographic positive or negative or any assemblage of such photographs
UK LICENCE THRESHOLD: £10,000
Textiles (excluding carpets and tapestries)
UK LICENCE THRESHOLD: £12,000
British Historical Portraits
UK LICENCE THRESHOLD: £10,000

Sotheby's recommends that you retain all import and export papers, including licences, as in certain countries you may be required to produce them to governmental authorities.

Endangered Species Items made of or incorporating plant or animal material, such as coral, crocodile, ivory, whalebone, tortoiseshell, etc., irrespective of age or value, may require a licence or certificate prior to exportation and require additional licences or certificates upon importation to any country outside the EU. Please note that the ability to obtain an export licence or certificate does not ensure the ability to obtain an import licence or certificate in another country, and vice versa. For example, it is illegal to import African elephant ivory into the United States and there are other restrictions on the importation of ivory into the US under certain US regulations which are designed to protect wildlife conservation. Sotheby's suggests that buyers check with their own government regarding wildlife import requirements prior to placing a bid. It is the buyer's responsibility to obtain any export or import licences and/or certificates as well as any other required documentation (please refer to Condition 11 of the Conditions of Business for Buyers printed in this catalogue). Please note that Sotheby's is not able to assist buyers with the shipment of any lots containing ivory and/or other restricted materials into the US. A buyer's inability to export or import these lots cannot justify a delay in payment or a sale's cancellation.

EXPLANATION OF SYMBOLS

The following key explains the symbols you may see inside this catalogue.

◊ **Guaranteed Property**
The seller of lots with this symbol has

been guaranteed a minimum price from one auction or a series of auctions. This guarantee may be provided by Sotheby's or jointly by Sotheby's and a third party. Sotheby's and any third parties providing a guarantee jointly with Sotheby's benefit financially if a guaranteed lot is sold successfully and may incur a loss if the sale is not successful. If the Guaranteed Property symbol for a lot is not included in the printing of the auction catalogue, a pre-sale or pre-lot announcement will be made indicating that there is a guarantee on the lot. If every lot in a catalogue is guaranteed, the Important Notices in the sale catalogue will so state and this symbol will not be used for each lot.

▲ **Property in which Sotheby's has an Ownership Interest**

Lots with this symbol indicate that Sotheby's owns the lot in whole or in part or has an economic interest in the lot equivalent to an ownership interest.

➤ **Irrevocable Bids**

Lots with this symbol indicate that a party has provided Sotheby's with an irrevocable bid on the lot that will be executed during the sale at a value that ensures that the lot will sell. The irrevocable bidder, who may bid in excess of the irrevocable bid, may be compensated for providing the irrevocable bid by receiving a contingent fee, a fixed fee or both. If the irrevocable bidder is the successful bidder, any contingent fee, fixed fee or both (as applicable) for providing the irrevocable bid may be netted against the irrevocable bidder's obligation to pay the full purchase price for the lot and the purchase price reported for the lot shall be net of any such fees. From time to time, Sotheby's may enter into irrevocable bid agreements that cover multiple lots. In such instances, the compensation Sotheby's will pay the irrevocable bidder is allocated to the lots for which the irrevocable bidder is not the successful purchaser. Under such circumstances, the total compensation to the irrevocable bidder will not exceed the total buyer's premium and other amounts paid to Sotheby's in respect of any lots for which the irrevocable bidder is not the successful bidder. If the irrevocable bid is not secured until after the printing of the auction catalogue, Sotheby's will notify bidders that there is an irrevocable bid on the lot by one or more of the following means: a pre-sale or pre-lot announcement, by written notice at the auction or by including an irrevocable bid symbol in the e-catalogue for the sale prior to the auction. From time to time, Sotheby's or any affiliated company may provide the irrevocable bidder with financing related to the irrevocable bid. If the irrevocable bidder is advising anyone with respect to the lot, Sotheby's requires the irrevocable bidder to disclose his or her financial interest in the lot. If an agent is advising you or bidding on your behalf with respect to a lot identified as being subject to an irrevocable bid, you should request that the agent disclose whether or not he or she has a financial interest in the lot.

∟ **Interested Parties**

Lots with this symbol indicate that parties with a direct or indirect interest in the lot

may be bidding on the lot, including (i) the beneficiary of an estate selling the lot, or (ii) the joint owner of a lot. If the interested party is the successful bidder, they will be required to pay the full Buyer's Premium. In certain instances, interested parties may have knowledge of the reserve. In the event the interested party's possible participation in the sale is not known until after the printing of the auction catalogue, a pre-lot announcement will be made indicating that interested parties may be bidding on the lot.

◻ **No Reserve**

Unless indicated by a box (◻), all lots in this catalogue are offered subject to a reserve. A reserve is the confidential hammer price established between Sotheby's and the seller and below which a lot will not be sold. The reserve is generally set at a percentage of the low estimate and will not exceed the low estimate for the lot. If any lots in the catalogue are offered without a reserve, these lots are indicated by a box (◻). If all lots in the catalogue are offered without a reserve, a Special Notice will be included to this effect and the box symbol will not be used for each lot.

⊕ **Property Subject to the Artist's Resale Right**

Purchase of lots marked with this symbol (⊕) will be subject to payment of the Artist's Resale Right, at a percentage of the hammer price calculated as follows:

Portion of the hammer price (in €)

Royalty Rate

From 0 to 50,000	4%
From 50,000.01 to 200,000	3%
From 200,000.01 to 350,000	1%
From 350,000.01 to 500,000	0.5%
Exceeding 500,000	0.25%

The Artist's Resale Right payable will be the aggregate of the amounts payable under the above rate bands, subject to a maximum royalty payable of 12,500 euros for any single work each time it is sold. The maximum royalty payable of 12,500 euros applies to works sold for 2 million euros and above. Calculation of the artist's resale right will be based on the pound sterling / Euro reference exchange rate quoted on the date of the sale by the European Central Bank.

◉ **Restricted Materials**

Lots with this symbol have been identified at the time of cataloguing as containing organic material which may be subject to restrictions regarding import or export. The information is made available for the convenience of Buyers and the absence of the Symbol is not a warranty that there are no restrictions regarding import or export of the Lot; Bidders should refer to Condition 11 of the Conditions of Business for Buyers. Please also refer to the section on Endangered Species in the Buying at Auction Guide. As indicated in the Endangered Species section, Sotheby's is not able to assist buyers with the shipment of any lots with this symbol into the US.

A buyer's inability to export or import any lots with this symbol cannot justify a delay in payment or a sale's cancellation.

▮ **Monumental**

Lots with this symbol may, in our opinion,

require special handling or shipping services due to size or other physical considerations. Buyers are advised to inspect the lot and to contact Sotheby's prior to the sale to discuss any specific shipping requirements.

Please refer to VAT information for Buyers for VAT symbols used in this catalogue. Value Added Tax (VAT) may be payable on the hammer price and/or the buyer's premium. Buyer's premium may attract a charge in lieu of VAT. Please read carefully the "VAT INFORMATION FOR BUYERS" printed in this catalogue.

VAT AND OTHER TAX INFORMATION FOR BUYERS

The following paragraphs are intended to give general guidance to buyers on the VAT and certain other potential tax implications of purchasing property at Sotheby's. The information concerns the most usual circumstances and is not intended to be complete. In all cases the relevant tax legislation takes precedence and the VAT rates in effect on the day of the auction will be the rates charged except for lots sold subject to Temporary Admission for which the applicable rate will be that in force at the time of collection. It should be noted that, for VAT purposes only, Sotheby's is not usually treated as an agent and most property is sold as if it is the property of Sotheby's.

In the following paragraphs, reference to VAT symbols shall mean those symbols located beside the lot number or the pre-sale estimates in the catalogue (or amending sale room notice).

1. PROPERTY WITH NO VAT SYMBOL

Where there is no VAT symbol, Sotheby's is able to use the Auctioneer's Margin Scheme and VAT will not normally be charged on the hammer price.

Sotheby's must bear VAT on the buyer's premium and hence will charge an amount in lieu of VAT at the standard rate on this premium. This amount will form part of the buyer's premium on our invoice and will not be separately identified. A limited range of goods, including most books, are not liable to VAT and therefore no amount in lieu of VAT will be added to the premium.

Please see 'Exports from the European Union' for the conditions to be fulfilled before the amount in lieu of VAT on the buyer's premium may be cancelled or refunded.

(VAT-registered buyers from within the European Union (EU) should note that the amount in lieu of VAT contained within the buyer's premium cannot be cancelled or refunded by Sotheby's or HM Revenue and Customs.)

Buyers requiring an invoice under the normal VAT rules, instead of a margin scheme invoice, should notify the Post Sale Service Group or the Client Accounts Department on the day of the auction and an invoice with VAT on the hammer price will be raised. Buyers requiring re-invoicing under the normal VAT rules subsequent to a margin scheme invoice having been raised should contact the Client Accounts

Department for assistance.

2. PROPERTY WITH A † SYMBOL

These items will be sold under the normal UK VAT rules and VAT will be charged at the standard rate on both the hammer price and buyer's premium.

Please see 'Exports from the European Union' for the conditions to be fulfilled before the VAT charged on the hammer price may be cancelled or refunded.

(VAT-registered buyers from other EU countries may have the VAT cancelled or refunded if they provide Sotheby's with their VAT registration number and evidence that the property has been removed from the UK within three months of the date of sale. The evidence of removal required is a certificate of shipment or, if the lots were carried by hand, proof of travel and completion of a form available from the Post Sale Service Group.

3. PROPERTY WITH A α SYMBOL

Items sold to buyers whose address is in the EU will be assumed to be remaining in the EU. The property will be invoiced as if it had no VAT symbol (see 'Property with no VAT symbol' above). However, if the property is to be exported from the EU, Sotheby's will re-invoice the property under the normal VAT rules (see 'Property sold with a † symbol' above) as requested by the seller.

Items sold to buyers whose address is outside the EU will be assumed to be exported from the EU. The property will be invoiced under the normal VAT rules (see 'Property sold with a † symbol' above). Although the hammer price will be subject to VAT this will be cancelled or refunded upon export - see 'Exports from the European Union'. However, buyers who are not intending to export their property from the EU should notify our Client Accounts Department on the day of the sale and the property will be re-invoiced showing no VAT on the hammer price (see 'Property sold with no VAT symbol' above).

4. PROPERTY SOLD WITH A ‡ OR Ω SYMBOL

These items have been imported from outside the EU to be sold at auction under Temporary Admission. When Sotheby's releases such property to buyers in the UK, the buyer will become the importer and must pay Sotheby's import VAT at the following rates on the hammer price:

- ‡ - the reduced rate
- Ω - the standard rate

You should also note that the appropriate rate will be that in force on the date of collection of the property from Sotheby's and not that in force at the date of the sale.

These lots will be invoiced under the margin scheme. Sotheby's must bear VAT on the buyer's premium and hence will charge an amount in lieu of VAT at the standard rate on this premium. This amount will form part of the buyer's premium on our invoice and will not be separately identified.

(VAT-registered buyers from the EU

should note that the import VAT charged on property released in the UK cannot be cancelled or refunded by Sotheby's, however you may be able to seek repayment) by applying to HM Revenue and Customs - see 'VAT Refunds from HM Revenue and Customs')

(VAT-registered buyers from the UK should note that the invoice issued by Sotheby's for these items is not suitable evidence in respect of import VAT.)

On request, immediately after sale, the Temporary Admission Department can either ask HM Revenue and Customs to generate a C79 certificate (for UK buyers), or obtain a copy of the import C88 (for other EU VAT registered buyers), which may be used to claim recovery of the VAT. Otherwise Sotheby's may re-invoice the lot as if it had been sold with a † symbol and charge VAT at the standard rate on both the hammer price and premium and provide a tax invoice to the buyer. This may enable a buyer who is VAT registered elsewhere in the EU to avoid payment of VAT in the United Kingdom. Re-invoicing in this way may make the lot ineligible to be re-sold using the margin scheme.

Sotheby's will transfer all lots sold subject to Temporary Admission to its Customs warehouse immediately after sale.

5. EXPORTS FROM THE EUROPEAN UNION

The following amounts of VAT may be cancelled or refunded provided Sotheby's receive the appropriate export documents within the time limits stated:

Property with no VAT symbol (see paragraph 1)

The amount in lieu of VAT charged on Buyer's Premium may be refunded provided the purchaser resides outside of the United Kingdom and the property is exported from the EU within 3 months of the sale. Sotheby's must be provided with the appropriate proof of export immediately after export of the goods.

Property with a † symbol

The VAT charged upon the hammer price may be refunded provided the purchaser resides outside of the United Kingdom and the property is exported from the EU within 3 months of the sale. Sotheby's must be provided with the appropriate proof of export immediately after export of the goods.

Property with a ‡ or a Ω symbol

The Temporary Admission VAT charged on the hammer price may be refunded under the following circumstances:-

- Sotheby's is instructed to ship the property to a place outside the EU
- The property is hand carried from the UK directly outside the EU and Sotheby's pre lodge the export entry with HMRC
- The VAT liability is transferred to your shipper's own Temporary Admission or Customs Warehouse arrangement prior to collection from Sotheby's

Under all other circumstances Sotheby's is required to complete the importation and pay the VAT due to HM Revenue and Customs prior to the

property leaving its premises and so a VAT refund will not be possible.

Proof of export required

• for lots sold under the margin scheme (no VAT symbol) or the normal VAT rules († symbol), Sotheby's is provided with appropriate documentary proof of export from the EU. Buyers carrying their own property should obtain hand-carry papers from the Shipping department to facilitate this process.

• for lots sold under Temporary Admission (‡ or Ω symbols), and subsequently transferred to Sotheby's Customs Warehouse (into Bond). The property must be shipped as described above in the paragraph headed Property with a ‡ or a Ω symbol.

• buyers carrying their own property must obtain hand-carry papers from the Shipping Department for which a small administrative charge will be made. The VAT refund will be processed once the appropriate paperwork has been returned to Sotheby's.

• Sotheby's is not able to cancel or refund any VAT charged on sales made to UK or EU private residents unless the lot is subject to Temporary Admission and the property is exported from the EU and the requisite export papers provided to Sotheby's within one month of collection of the property.

• Sotheby's is not able to cancel or refund any VAT charged on sales to UK or EU private residents unless the lot is subject to Temporary Admission and is shipped as described above.

Buyers intending to export, repair, restore or alter lots sold under Temporary Admission (‡ or Ω symbols) and therefore transferred to Customs Warehouse after sale should notify the Shipping Department before collection. Failure to do so may result in the import VAT becoming payable immediately and Sotheby's being unable to refund the VAT charged on deposit.

6. VAT REFUNDS FROM HM REVENUE AND CUSTOMS

Where VAT charged cannot be cancelled or refunded by Sotheby's, it may be possible to seek repayment from HM Revenue and Customs. Repayments in this manner are limited to businesses located outside the UK.

Claim forms are available from:

HM Revenue and Customs
VAT Overseas Repayments Unit
PO Box 34, Foyle House
Duncreggan Road, Londonderry
Northern Ireland, BT48 7AE
Tel: +44 (0)2871 305100
Fax: +44 (0)2871 305101
enq.oru.ni@hmrc.gsi.gov.uk

7. SALES AND USE TAXES

Buyers should note that local sales taxes or use taxes may become payable upon import of items following purchase (for example, use tax may be due when purchased items are imported into certain states in the US). Buyers should obtain their own advice in this regard.

In the event that Sotheby's ships items

for a purchaser in this sale to a destination within a US state in which Sotheby's is registered to collect sales tax. Sotheby's is obliged to collect and remit the respective state's sales / use tax in effect on the total purchase price (including hammer price, buyer's premium, shipping costs and insurance) of such items, regardless of the country in which the purchaser resides or is a citizen. Where the purchaser has provided Sotheby's with a valid Resale Exemption Certificate prior to the release of the property, sales / use tax will not be charged. Clients who wish to provide resale or exemption documentation for their purchases should contact Post Sale Services.

Clients who wish to have their purchased lots shipped to the US by Sotheby's are advised to contact the Post Sale Manager listed in the front of this catalogue before arranging shipping.

CONDITIONS OF BUSINESS FOR BUYERS

The nature of the relationship between Sotheby's, Sellers and Bidders and the terms on which Sotheby's (as auctioneer) and Sellers contract with Bidders are set out below.

Bidders' attention is specifically drawn to Conditions 3 and 4 below, which require them to investigate lots prior to bidding and which contain specific limitations and exclusions of the legal liability of Sotheby's and Sellers. The limitations and exclusions relating to Sotheby's are consistent with its role as auctioneer of large quantities of goods of a wide variety and Bidders should pay particular attention to these Conditions.

1. INTRODUCTION

(a) Sotheby's and Sellers' contractual relationship with prospective Buyers is governed by:

- (i) these Conditions of Business;
- (ii) the Conditions of Business for Sellers displayed in the saleroom and which are available upon request from Sotheby's UK salerooms or by telephoning +44 (0)20 7293 6482;
- (iii) Sotheby's Authenticity Guarantee as printed in the sale catalogue;
- (iv) any additional notices and terms printed in the sale catalogue, including the guide to Buying at Auction; and
- (v) in respect of online bidding via the internet, the Conditions of Business for Live Online Bidding on the Sotheby's website, in each case as amended by any saleroom notice or auctioneer's announcement at the auction.

(b) As auctioneer, Sotheby's acts as agent for the Seller. A sale contract is made directly between the Seller and the Buyer. However, Sotheby's may own a lot (and in such circumstances acts in a principal capacity as Seller) and/or may have a legal, beneficial or financial interest in a lot as a secured creditor or otherwise.

2. COMMON TERMS

In these Conditions of Business:

"Bidder" is any person considering, making or attempting to make a bid, by whatever means, and includes Buyers;

"Buyer" is the person who makes the highest bid or offer accepted by the auctioneer, and includes such person's principal when bidding as agent;

"Buyer's Expenses" are any costs or expenses due to Sotheby's from the Buyer and any Artist's Resale Right levy payable in respect of the sale of the Property, including an amount in respect of any applicable VAT thereon;

"Buyer's Premium" is the commission payable by the Buyer on the Hammer Price at the rates set out in the guide to Buying at Auction plus any applicable VAT or an amount in lieu of VAT;

"Counterfeit" is as defined in Sotheby's Authenticity Guarantee;

"Hammer Price" is the highest bid accepted by the auctioneer by the fall of the hammer, (in the case of wine, as apportioned pro-rata by reference to the number of separately identified items in that lot), or in the case of a post-auction sale, the agreed sale price;

"Purchase Price" is the Hammer Price and applicable Buyer's Premium and VAT;

"Reserve" is the (confidential) minimum Hammer Price at which the Seller has agreed to sell a lot;

"Seller" is the person offering a lot for sale (including their agent (other than Sotheby's), executors or personal representatives);

"Sotheby's" means Sotheby's, the unlimited company which has its registered office at 34-35 New Bond Street, London W1A 2AA;

"Sotheby's Company" means both Sotheby's in the USA and any of its subsidiaries (including Sotheby's in London) and Sotheby's Diamonds SA and its subsidiaries (in each case "subsidiary" having the meaning of Section 1159 of the Companies Act 2006);

"VAT" is Value Added Tax at the prevailing rate. Further information is contained in the guide to Buying at Auction.

3. DUTIES OF BIDDERS AND OF SOTHEBY'S IN RESPECT OF ITEMS FOR SALE

(a) Sotheby's knowledge in relation to each lot is partially dependent on information provided to it by the Seller, and Sotheby's is not able to and does not carry out exhaustive due diligence on each lot. Bidders acknowledge this fact and accept responsibility for carrying out inspections and investigations to satisfy themselves as to the lots in which they may be interested.

(b) Each lot offered for sale at Sotheby's is available for inspection by Bidders prior to the sale. Sotheby's accepts bids on lots solely on the basis that Bidders (and independent experts on their behalf, to the extent appropriate given the nature and value of the lot and the Bidder's own expertise) have fully inspected the lot prior to bidding and have satisfied themselves as to both the condition of the

lot and the accuracy of its description.

(c) Bidders acknowledge that many lots are of an age and type which means that they are not in perfect condition. All lots are offered for sale in the condition they are in at the time of the auction (whether or not Bidders are in attendance at the auction). Condition reports may be available to assist when inspecting lots. Catalogue descriptions and condition reports may on occasions make reference to particular imperfections of a lot, but Bidders should note that lots may have other faults not expressly referred to in the catalogue or condition report. Illustrations are for identification purposes only and will not convey full information as to the actual condition of lots.

(d) Information provided to Bidders in respect of any lot, including any estimate, whether written or oral and including information in any catalogue, condition or other report, commentary or valuation, is not a representation of fact but rather is a statement of opinion genuinely held by Sotheby's. Any estimate may not be relied on as a prediction of the selling price or value of the lot and may be revised from time to time in Sotheby's absolute discretion.

(e) No representations or warranties are made by Sotheby's or the Seller as to whether any lot is subject to copyright or whether the Buyer acquires copyright in any lot.

(f) Subject to the matters referred to at 3(a) to 3(e) above and to the specific exclusions contained at Condition 4 below, Sotheby's shall exercise such reasonable care when making express statements in catalogue descriptions or condition reports as is consistent with its role as auctioneer of lots in the sale to which these Conditions relate, and in the light of:

- (i) the information provided to it by the Seller;
- (ii) scholarship and technical knowledge; and
- (iii) the generally accepted opinions of relevant experts, in each case at the time any such express statement is made.

4. EXCLUSIONS AND LIMITATIONS OF LIABILITY TO BUYERS

(a) Sotheby's shall refund the Purchase Price to the Buyer in circumstances where it deems that the lot is a Counterfeit and each of the conditions of the Authenticity Guarantee has been satisfied.

(b) In the light of the matters in Condition 3 above and subject to Conditions 4(a) and 4(e), neither any Sotheby's Company nor the Seller:

- (i) is liable for any errors or omissions in information provided to Bidders by Sotheby's (or any Sotheby's Company), whether orally or in writing, whether negligent or otherwise, except as set out in Condition 3(f) above;
- (ii) gives any guarantee or warranty to Bidders and any implied warranties and conditions are excluded (save in so far as such obligations cannot be excluded by law) other than the express warranties given by

the Seller to the Buyer in Condition 2 of the Sellers' Conditions of Business;

(iii) accepts responsibility to any Bidders in respect of acts or omissions (whether negligent or otherwise) by Sotheby's in connection with the conduct of auctions or for any matter relating to the sale of any lot.

(c) Unless Sotheby's owns a lot offered for sale, it is not responsible for any breach of these conditions by the Seller.

(d) Without prejudice to Condition 4(b), any claim against Sotheby's or the Seller by a Bidder is limited to the Purchase Price with regard to that lot. Neither Sotheby's nor the Seller shall under any circumstances be liable for any consequential losses.

(e) None of this Condition 4 shall exclude or limit Sotheby's liability in respect of any fraudulent misrepresentation made by Sotheby's or the Seller, or in respect of death or personal injury caused by the negligent acts or omissions of Sotheby's or the Seller.

5. BIDDING AT AUCTION

(a) Sotheby's has absolute discretion to refuse admission to the auction. Bidders must complete a Paddle Registration Form and supply such information and references as required by Sotheby's. Bidders act as principal unless they have Sotheby's prior written consent to bid as agent for another party. Bidders are personally liable for their bid and are jointly and severally liable with their principal if bidding as agent.

(b) Sotheby's advises Bidders to attend the auction but will seek to carry out absentee written bids which are in pounds sterling and, in Sotheby's opinion, clear and received sufficiently in advance of the sale of the lot, endeavouring to ensure that the first received of identical written bids has priority.

(c) Where available, written, telephone and online bids are offered as an additional service for no extra charge, at the Bidder's risk and shall be undertaken with reasonable care subject to Sotheby's other commitments at the time of the auction; Sotheby's therefore cannot accept liability for failure to place such bids save where such failure is unreasonable. Telephone and online bids may be recorded. Online bids are made subject to the Conditions of Business for Live Online Bidding available on the Sotheby's website or upon request. The Conditions of Business for Live Online Bidding apply in relation to online bids, in addition to these Conditions of Business.

6. CONDUCT OF THE AUCTION

(a) Unless otherwise specified, all lots are offered subject to a Reserve, which shall be no higher than the low presale estimate at the time of the auction.

(b) The auctioneer has discretion at any time to refuse any bid, withdraw any lot, re-offer a lot for sale (including after the fall of the hammer) if he believes there may be error or dispute, and take such other action as he reasonably thinks fit.

(c) The auctioneer will commence and

advance the bidding at levels and in increments he considers appropriate and is entitled to place a bid or series of bids on behalf of the Seller up to the Reserve on the lot, without indicating he is doing so and whether or not other bids are placed.

(d) Subject to Condition 6(b), the contract between the Buyer and the Seller is concluded on the striking of the auctioneer's hammer, whereupon the Buyer becomes liable to pay the Purchase Price.

(e) Any post-auction sale of lots offered at auction shall incorporate these Conditions as if sold in the auction.

7. PAYMENT AND COLLECTION

(a) Unless otherwise agreed, payment of the Purchase Price for a lot and any Buyer's Expenses are due by the Buyer in pounds sterling immediately on conclusion of the auction (the "Due Date") notwithstanding any requirements for export, import or other permits for such lot.

(b) Title in a purchased lot will not pass until Sotheby's has received the Purchase Price and Buyer's Expenses for that lot in cleared funds. Sotheby's is not obliged to release a lot to the Buyer until title in the lot has passed and appropriate identification has been provided, and any earlier release does not affect the passing of title or the Buyer's unconditional obligation to pay the Purchase Price and Buyer's Expenses.

(c) The Buyer is obliged to arrange collection of purchased lots no later than thirty (30) calendar days after the date of the auction. Purchased lots are at the Buyer's risk (and therefore their sole responsibility for insurance) from the earliest of i) collection or ii) the thirty-first calendar day after the auction. Until risk passes, Sotheby's will compensate the Buyer for any loss or damage to the lot up to a maximum of the Purchase Price paid. Buyers should note that Sotheby's assumption of liability for loss or damage is subject to the exclusions set out in Condition 6 of the Conditions of Business for Sellers.

(d) For all items stored by a third party and not available for collection from Sotheby's premises, the supply of authority to release to the Buyer shall constitute collection by the Buyer.

(e) All packing and handling is at the Buyer's risk. Sotheby's will not be liable for any acts or omissions of third party packers or shippers.

(f) The Buyer of any firearm is solely responsible for obtaining all valid firearm or shotgun certificates or certificates of registration as a firearms dealer, as may be required by the regulations in force in England and Wales or Scotland (as applicable) relating to firearms or other weapons at the time of the sale, and for complying with all such regulations, whether or not notice of such is published in the Sale Catalogue. Sotheby's will not deliver a firearm to a Buyer unless the Buyer has first supplied evidence to Sotheby's satisfaction of compliance with this Condition.

8. REMEDIES FOR NON-PAYMENT

Without prejudice to any rights the Seller may have, if the Buyer without prior agreement fails to make payment for the lot within five days of the auction, Sotheby's may in its sole discretion (having informed the Seller) exercise one or more of the following remedies:

(a) store the lot at its premises or elsewhere at the Buyer's sole risk and expense;

(b) cancel the sale of the lot;

(c) set off any amounts owed to the Buyer by a Sotheby's Company against any amounts owed to Sotheby's by the Buyer in respect of the lot;

(d) apply any payments made to Sotheby's by the buyer as part of the Purchase Price and Buyer's Expenses towards that or any other lot purchased by the Buyer, or to any shortfall on the resale of any lot pursuant to paragraph (h) below, or to any damages suffered by Sotheby's as a result of breach of contract by the Buyer;

(e) reject future bids from the Buyer or render such bids subject to payment of a deposit;

(f) charge interest at 6% per annum above HSBC Bank plc Base Rate from the Due Date to the date the Purchase Price and relevant Buyer's Expenses are received in cleared funds (both before and after judgement);

(g) exercise a lien over any of the Buyer's property which is in the possession of a Sotheby's Company. Sotheby's shall inform the Buyer of the exercise of any such lien and within 14 days of such notice may arrange the sale of such property and apply the proceeds to the amount owed to Sotheby's;

(h) resell the lot by auction or private sale, with estimates and reserves at Sotheby's discretion. In the event such resale is for less than the Purchase Price and Buyer's Expenses for that lot, the Buyer will remain liable for the shortfall together with all costs incurred in such resale;

(i) commence legal proceedings to recover the Purchase Price and Buyer's Expenses for that lot, together with interest and the costs of such proceedings on a full indemnity basis; or

(j) release the name and address of the Buyer to the Seller to enable the Seller to commence legal proceedings to recover the amounts due and legal costs. Sotheby's will take reasonable steps to notify the Buyer prior to releasing such details to the Seller.

9. BIDDER'S / BUYER'S WARRANTIES

(a) The Bidder and/or Buyer is not subject to trade sanctions, embargoes or any other restriction on trade in the jurisdiction in which it does business as well as under the laws of the European Union, the laws of England and Wales, or the laws and regulations of the United States, and is not owned (nor partly owned) or controlled by such sanctioned person(s) (collectively, "Sanctioned Person(s)").

(b) Where acting as agent, the principal is not a Sanctioned Person(s) nor owned (or partly owned) or controlled by Sanctioned Person(s).

(c) The Bidder and/or Buyer undertakes that none of the Purchase Price will be funded by any Sanctioned Person(s), nor will any party involved in the transaction including financial institutions, freight forwarders or other forwarding agents or any other party be a Sanctioned Person(s) nor owned (or partly owned) or controlled by a Sanctioned Person(s), unless such activity is authorized in writing by the government authority having jurisdiction over the transaction or in applicable law or regulation.

10. FAILURE TO COLLECT PURCHASES

(a) If the Buyer pays the Purchase Price and Buyer's Expenses but fails to collect a purchased lot within thirty calendar days of the auction, the lot will be stored at the Buyer's expense (and risk) at Sotheby's or with a third party.

(b) If a purchased lot is paid for but not collected within six months of the auction, the Buyer authorises Sotheby's, having given notice to the Buyer, to arrange a resale of the item by auction or private sale, with estimates and reserves at Sotheby's discretion. The proceeds of such sale, less all costs incurred by Sotheby's, will be forfeited unless collected by the Buyer within two years of the original auction.

11. EXPORT AND PERMITS

It is the Buyer's sole responsibility to identify and obtain any necessary export, import, firearm, endangered species or other permit for the lot. Any symbols or notices in the sale catalogue reflect Sotheby's reasonable opinion at the time of cataloguing and offer Bidders general guidance only. Without prejudice to Conditions 3 and 4 above, Sotheby's and the Seller make no representations or warranties as to whether any lot is or is not subject to export or import restrictions or any embargoes. The denial of any permit or licence shall not justify cancellation or rescission of the sale contract or any delay in payment.

12. GENERAL

(a) All images and other materials produced for the auction are the copyright of Sotheby's, for use at Sotheby's discretion.

(b) Notices to Sotheby's should be in writing and addressed to the department in charge of the sale, quoting the reference number specified at the beginning of the sale catalogue. Notices to Sotheby's clients shall be addressed to the last address formally notified by them to Sotheby's.

(c) Should any provision of these Conditions of Business be held unenforceable for any reason, the remaining provisions shall remain in full force and effect.

(d) These Conditions of Business are not assignable by any Buyer without Sotheby's prior written consent, but are binding on Buyers' successors, assigns

and representatives. No act, omission or delay by Sotheby's shall be deemed a waiver or release of any of its rights.

(e) The Contracts (Rights of Third Parties) Act 1999 is excluded by these Conditions of Business and shall not apply to any contract made pursuant to them.

(f) The materials listed in Condition 1(a) above set out the entire agreement and understanding between the parties with respect to the subject matter hereof. It is agreed that, save in respect of liability for fraudulent misrepresentation, no party has entered into any contract pursuant to these terms in reliance on any representation, warranty or undertaking which is not expressly referred to in such materials.

13. DATA PROTECTION

Sotheby's will hold and process the Buyer's personal information and may share it with another Sotheby's Group company for use as described in, and in line with, Sotheby's Privacy Policy published on Sotheby's website at www.sothebys.com or available on request by email to enquiries@sothebys.com.

14. LAW AND JURISDICTION

Governing Law These Conditions of Business and all aspects of all matters, transactions or disputes to which they relate or apply (including any online bids in the sale to which these Conditions apply) shall be governed by and interpreted in accordance with English law.

Jurisdiction For the benefit of Sotheby's, all Bidders and Sellers agree that the Courts of England are to have exclusive jurisdiction to settle all disputes arising in connection with all aspects of all matters or transactions to which these Conditions of Business relate or apply. All parties agree that Sotheby's shall retain the right to bring proceedings in any court other than the Courts of England.

Service of Process All Bidders and Sellers irrevocably consent to service of process or any other documents in connection with proceedings in any court by facsimile transmission, personal service, delivery by mail or in any other manner permitted by English law, the law of the place of service or the law of the jurisdiction where proceedings are instituted, at the last address of the Buyer or Seller known to Sotheby's or any other usual address.

ADDITIONAL TERMS AND CONDITIONS FOR LIVE ONLINE BIDDING

The following terms and conditions (the "Online Terms") provide important information related to live online bidding via BIDnow, eBay, Invaluable, and any other Online Platform through which bidding is made available ("Online Platforms").

These Online Terms are in addition to and subject to the same law and our standard Conditions of Business for Sellers, Conditions of Business for Buyers, the authenticity guarantee and any other terms that are applicable to the relevant sale (together "Conditions of Business"), and are not intended in any way to replace them. By participating in this sale via any Online Platform, you acknowledge that you are bound by the Conditions of Business applicable in the relevant sale and by these additional Conditions.

1. The procedure for placing bids via any Online Platform is a one-step process; as soon as the "Bid Now" button is clicked, a bid is submitted. By placing a bid via any Online Platform, you accept and agree that bids submitted in this way are final and that you will not under any circumstances be permitted to amend or retract your bid. If a successful bid is sent to Sotheby's from your computer, phone, tablet, or any other device, you irrevocably agree to pay the full purchase price, including buyer's premium and all applicable taxes and other applicable charges.
2. If you have the leading bid, it will be indicated on the screen with the statement "Bid with you" (on BIDnow) or "You're the highest bidder" (on eBay) or "Bid with you" (on Invaluable). If a bid is placed online simultaneously with a bid placed by a bidder in the room or on the telephone (a "floor" bid), the "floor" bid generally will take precedence; the auctioneer will have the final discretion to determine the successful bidder or to reopen bidding. The auctioneer's decision is final.
3. The next bidding increment is shown on the screen for your convenience. The auctioneer has discretion to vary bidding increments for bidders in the auction room and on the telephones, but bidders using Online Platforms may not be able to place a bid in an amount other than a whole bidding increment. All bidding for this sale will be in the domestic currency of the sale location, and online bidders will not be able to see the currency conversion board that may be displayed in the auction room.
4. The record of sale kept by Sotheby's will be taken as absolute and final in all disputes. In the event of a discrepancy between any online records or messages provided to you and the record of sale kept by Sotheby's, the record of sale will govern.
5. Online bidders are responsible for making themselves aware of all sale room notices and announcements. All sale room notices will be read by the auctioneer at the beginning, where appropriate, or during the sale prior to a relevant lot being offered

for sale. Sotheby's recommends that online bidders log on at least ten minutes before the scheduled start of the auction to ensure that you have heard all announcements made by the auctioneer at the beginning of the sale.

6. Sotheby's reserves the right to refuse or revoke permission to bid via Online Platforms and to remove bidding privileges during a sale.
7. Purchase information shown in the "Account Activity" section of BIDnow, the "Purchase History" section of the "My eBay" page on eBay, and the "Account Activity" section of the "My Invaluable" page is provided for your convenience only. Successful bidders will be notified and invoiced after the sale. In the event of any discrepancy between the online purchase information and the invoice sent to you by Sotheby's following the respective sale, the invoice prevails. Terms and conditions for payment and collection of property remain the same regardless of how the winning bid was submitted.
8. Sotheby's offers online bidding as a convenience to our clients. Sotheby's will not be responsible for any errors or failures to execute bids placed via Online Platforms, including, without limitation, errors or failures caused by (i) a loss of connection to the internet or to the BIDnow, eBay, Invaluable or other Online Platform software by either Sotheby's or the client; (ii) a breakdown or problem with the BIDnow, eBay, Invaluable or other Online Platform software; or (iii) a breakdown or problem with a client's internet connection, mobile network or computer. Sotheby's is not responsible for any failure to execute an online bid or for any errors or omissions in connection therewith.
9. Live online bidding via all Online Platforms will be recorded.
10. In the event of any conflict between these Online Terms and Sotheby's Conditions of Business and Terms of Guarantee, Sotheby's Conditions of Business and Terms of Guarantee will control.
11. In the event of any conflict between these Online Terms and any term in any agreement between the User and eBay, these Online Terms will control for purposes of all Sotheby's auctions.
12. In the event of any conflict between these Online Terms and any term in any agreement between the User and Invaluable, these Online Terms will control for purposes of all Sotheby's auctions.

05/18 ONLINE_TERMS

SOTHEBY'S GREENFORD PARK STORAGE AND COLLECTION INFORMATION

Smaller items can normally be collected from New Bond Street, however large items may be sent to Sotheby's Greenford Park Fine Art Storage Facility. If you are in doubt about the location of your purchases please contact the Sale Administrator (see front of catalogue) prior to collection.

COLLECTION FROM NEW BOND STREET

Lots will be released to you or your authorised representative when full and cleared payment has been received by Sotheby's, together with settlement of any removal, interest, handling and storage charges thereon, appropriate identification has been provided and a release note has been produced by our Post Sale Service Group at New Bond Street, who are open Monday to Friday 9.00am to 5.00pm.

Any purchased lots that have not been collected within 30 days from the date of the auction will be subject to handling and storage charges at the rates set out below. In addition all purchased lots that have not been collected from our New Bond Street premises within 90 days of the auction will be transferred to Sotheby's Greenford Park Fine Art Storage Facility.

Collect your property from: Sotheby's Property Collection

Opening hours:
Monday to Friday 9.00am to 5.00pm
34-35 New Bond Street
London, W1A 2AA
Tel: +44 (0)20 7293 5358
Fax: +44 (0)20 7293 5933

COLLECTION FROM SOTHEBY'S GREENFORD PARK FINE ART STORAGE FACILITY

Lots will be released to you or your authorised representative when full and cleared payment has been received by Sotheby's, together with settlement of any removal, interest, handling and storage charges thereon, appropriate identification has been provided and a release note has been produced by our Post Sale Service Group at New Bond Street, who are open Monday to Friday 9.00am to 5.00pm.

Purchasers must ensure that their payment has been cleared prior to collection and that a release note has been forwarded to Sotheby's Greenford Park by our Post Sale Service Group at Sotheby's New Bond Street. Buyers who have established credit arrangements with Sotheby's may collect purchases prior to payment, although a release note is still required from our Post Sale Service Group as above.

Any purchased lots that have not been collected within 30 days from the date of the auction will be subject to handling and storage charges at the rates set out below.

Collect your property from: Sotheby's Greenford Park Fine Art Storage Facility

Opening hours:
Monday to Friday 8.30am to 4.30pm
Sotheby's Greenford Park,
13 Ockham Drive, Greenford, Middlesex,
UB6 0FD
Tel: +44 (0)20 7293 5600
Fax: +44 (0)20 7293 5625

ROUTE GUIDANCE TO SOTHEBY'S GREENFORD PARK FINE ART STORAGE FACILITY

From Bond Street head towards Regents Park, take the A40 Marylebone Road to Western Avenue. Take the exit off the A40 signposted Greenford A4127. At the roundabout take the third exit signposted Harrow and Sudbury, A4127 onto

Greenford Road. Go under the railway bridge and at the traffic lights turn first left into Rockware Avenue. At the T Junction turn right onto Oldfield Lane North and then left into Ockham Drive. Stop at the security barrier and say you are visiting Sotheby's. Once cleared, travel 300 yards down the road and Unit 13 is situated on the left hand side.

STORAGE CHARGES

Any purchased lots that have not been collected within 30 days from the date of the auction will be subject to handling and storage charges at the following rates:

Small items (such as jewellery, watches, books or ceramics): handling fee of £20 per lot plus storage charges of £2 per lot per day.

Medium items (such as most paintings or small items of furniture): handling fee of £30 per lot plus storage charges of £4 per lot per day.

Large items (items that cannot be lifted or moved by one person alone): handling fee of £40 per lot plus storage charges of £8 per lot per day.

Oversized items (such as monumental sculptures): handling fee of £80 per lot plus storage charges of £10 per lot per day.

A lot's size will be determined by Sotheby's on a case by case basis (typical examples given above are for illustration purposes only).

All charges are subject to VAT, where applicable. All charges are payable to Sotheby's at our Post Sale Service Group in New Bond Street.

Storage charges will cease for purchased lots which are shipped through Sotheby's Shipping Logistics from the date on which we have received a signed quote acceptance from you.

LIABILITY FOR LOSS OR DAMAGE

Buyers are reminded that Sotheby's accepts liability for loss or damage to lots for a maximum period of thirty (30) calendar days after the date of the auction. Please refer to Condition 7 of the Conditions of Business for Buyers.

SOTHEBY'S AUTHENTICITY GUARANTEE

If Sotheby's sells an item which subsequently is shown to be a "counterfeit", subject to the terms below Sotheby's will set aside the sale and refund to the Buyer the total amount paid by the Buyer to Sotheby's for the item, in the currency of the original sale.

For these purposes, "counterfeit" means a lot that in Sotheby's reasonable opinion is an imitation created to deceive as to authorship, origin, date, age, period, culture or source, where the correct description of such matters is not reflected by the description in the catalogue (taking into account any Glossary of Terms). No lot shall be considered a counterfeit by reason only of any damage and/or restoration and/or modification work of any kind (including repainting or over-painting).

Please note that this Guarantee does not apply if either:-

- (i) the catalogue description was in accordance with the generally accepted opinion(s) of scholar(s) and expert(s) at the date of the sale, or the catalogue description indicated that there was a conflict of such opinions; or
- (ii) the only method of establishing at the date of the sale that the item was a counterfeit would have been by means of processes not then generally available or accepted, unreasonably expensive or impractical to use; or likely to have caused damage to the lot or likely (in Sotheby's reasonable opinion) to have caused loss of value to the lot; or
- (iii) there has been no material loss in value of the lot from its value had it been in accordance with its description.

This Guarantee is provided for a period of five (5) years after the date of the relevant auction, is solely for the benefit of the Buyer and may not be transferred to any third party. To be able to claim under this Guarantee, the Buyer must:-

- (i) notify Sotheby's in writing within three (3) months of receiving any information that causes the Buyer to question the authenticity or attribution of the item, specifying the lot number, date of the auction at which it was purchased and the reasons why it is thought to be counterfeit; and
- (ii) return the item to Sotheby's in the same condition as at the date of sale to the Buyer and be able to transfer good title in the item, free from any third party claims arising after the date of the sale.

Sotheby's has discretion to waive any of the above requirements. Sotheby's may require the Buyer to obtain at the Buyer's cost the reports of two independent and recognised experts in the field, mutually acceptable to Sotheby's and the Buyer. Sotheby's shall not be bound by any reports produced by the Buyer, and reserves the right to seek additional expert advice at its own expense. In the event Sotheby's decides to rescind the sale under this Guarantee, it may refund to the Buyer the reasonable costs of up to two mutually approved independent expert reports.

4/08 NBS_GUARANTEE MAIN

IMPORTANT NOTICES

ESTIMATES IN EUROS AND US DOLLARS

As a guide to potential buyers, estimates for this sale are also shown in Euros and US Dollars. The estimates printed in the catalogue in Pounds Sterling have been converted at the following rate, which was current at the time of printing. These estimates may have been rounded:

£1 = US\$1.31

£1 = €1.15

By the date of the sale this rate is likely to have changed, and buyers are recommended to check before bidding.

During the sale Sotheby's may provide a screen to show currency conversions as bidding progresses. This is intended for guidance only and all bidding will be in Pounds Sterling. Sotheby's is not responsible for any error or omissions in the operation of the currency converter.

Payment for purchases is due in Pounds Sterling, however the equivalent amount in any other currency will be accepted at the rate prevailing on the day that payment is received in cleared funds.

Settlement is made to vendors in the currency in which the sale is conducted, or in another currency on request at the rate prevailing on the day that payment is made by Sotheby's.

LIABILITY FOR LOSS OR DAMAGE FOR PURCHASED LOTS

Purchasers are requested to arrange clearance as soon as possible and are reminded that Sotheby's accepts liability for loss or damage to lots for a maximum period of thirty (30) calendar days following the date of the auction. Please refer to condition 7 of the Conditions of Business for Buyers.

COLLECTION OF LOTS MARKED 'W'

All purchased lots marked in the catalogue with a W will be transferred from the saleroom to Sotheby's Greenford Park Fine Art Storage Facility after 5 pm on the day of the sale. Collection can be made from Sotheby's Greenford Park two days after the sale, but not on the day immediately following the sale.

Exceptions to this procedure will be notified by auction room notice and announced at the time of the sale. After 30 days storage charges will commence.

Please see the Buying at Auction guide for further information.

SAFETY AT SOTHEBY'S

Sotheby's is concerned for your safety while you are on our premises and we endeavour to display items safely so far as is reasonably practicable. Nevertheless, should you handle any items on view at our premises, you do so at your own risk.

Some items can be large and/or heavy and can be dangerous if mishandled. Should you wish to view or inspect any items more closely please ask for assistance from a member of Sotheby's staff to ensure your safety and the safety of the property on view.

Some items on view may be labelled "PLEASE DO NOT TOUCH". Should you wish to view these items you must ask for assistance from a member of Sotheby's staff who will be pleased to assist you. Thank you for your co-operation.

11/10 NBS_NOTICE_E & \$US

Forthcoming Auctions

A comprehensive calendar of international auctions, in addition to all sale results, can be viewed at sothebys.com

IMPORTANT WATCHES

12 May 2019

Geneva

IMPORTANT WATCHES

4 June 2019

New York

WATCHES ONLINE

31 May – 13 June 2019

WATCHES ONLINE

8 – 17 July 2019

Notes

International Departments

For a full listing of our offices and salerooms worldwide with detailed information on all of Sotheby's services, visit sothebys.com

Sam Hines
Worldwide Head of Watches
+852 2822 5501

Daryn Schnipper
*Chairman, International Watches
Division*
+1 212 606 7184

Laurence Nicolas
*Global Managing Director
Jewellery and Watches*

Maria Kelly
*Deputy Managing Director
Jewellery and Watches*

New York

Katharine Thomas
*Senior Vice President,
Head of Department*
Nate Borgelt
Vice President
Leigh Zagoory
Janet Tham
+1 212 606 7184

FAX +1 212 606 7592

London

Joanne Lewis
*Deputy Director
Head of Department*
Kate Lacey
Director
Benoit Colson
Deputy Director
Julien Asso
+44 (0)20 7293 5793

FAX +44 (0)20 7293 5915

Geneva

Mikael Wallhagen
*Director,
Head of Department*
Pedro Reiser
Deputy Director
Tony Frank
Director
Charlie Foxhall
Patrick Stebler
+41 (0)22 908 4800

FAX +41 (0) 22 908 4858

Dubai

Frederic Waterlot
+97 1526 869604

Hong Kong

Joey Luk
Deputy Director
John Chan
Andrew Yip
+852 2822 8117
FAX +852 2521 0588

Amsterdam

Albertine Verlinde
+31 20 550 2204

Brussels

Marianna Lora
+32 2 627 7198

Dubai

Noha Hussein
+971526 869604

Lugano

Iris Fabbri
+41 91993 3060

Madrid

Sofia Roji
+4 91 576 5714

Milan

Alessandra Berengan
+39 34 9272 8721

Munich

Carmen Knott
+49 89 291 31 51

Paris

Magali Teisseire
+33 1 53 05 52 37

Tel Aviv

Sigal Mordechai
+972 3 560 1666

Vienna

Kerstin Bauhofer
+43 1512 4772

Zurich

Joelle Griesmaier
+41 44 226 2229

Beijing

Lei Tang
+86 10 6408 8890

Indonesia

Jasmine Prasetio
+62 21 5797 3603

Japan

Maiko Ichikawa
+81 3 3230 2755

Malaysia

Walter Cheah ‡
+60 12 208 3917

Philippines

Angela Hsu ‡
+63 9178150075

Shanghai

Rachel Shen
+86 21 6288 7500

Singapore

Esther Seet
+65 6732 8239

Taiwan

Wendy Lin
+886 2 2757 6689

Thailand

Wannida Saetio
+66 2 286 0788

Buenos Aires

Adela Casal
+54 11 5031 9812

Chicago

Gary Metzner
+1 312 475 7900

Los Angeles

Yvonne Teng
+1 310 7861 864

Mexico

Lulu Creel
+11 5255 5281 2100

Palm Beach

Ashley Ramos
+1 561 833 2582

Philadelphia

Caroline Nagy
+1 610 649 2600

Rio de Janeiro

Katia Mindlin Leite-Barbosa
+55 212 553 1946

San Francisco

Jennifer Biederbeck
+1 415 772 9154

‡ Consultant

Index

Audemars Piguet 56, 57

Berg, F. 33

Blancpain 50, 51

Breguet 32, 54

Cartier 49

Charles Frodsham, London 38

Chopard, Luc 15

Constantin, Vacheron 41

F.P. Journe 53

John Arnold 36

Justin Vulliamy 39

Keys, David 31

Merano 17

Montres Genève 18

Omega 73, 74

Panerai 55

Patek Philippe 59-72

Piaget 16, 19-27, 52

Richard Mille 58

Rolex 1-13, 42-48, 75-85

Rousseau 28, 29

S. Smith & Son, London 37

Thomas Engel 34, 35

Thomas Tompion 30

Ulysse Nardin 14, 40



In recognition of the high standards of business administration and our compliance with all required customs protocols and procedures, Sotheby's UK has been awarded the European Union Authorised Economic Operator status by Her Majesty's Revenue and Customs.



Sotheby's UK is committed to improving its sustainability, conserving resources and reducing the environmental impact of its various operations. A copy of Sotheby's Environmental Policy is available on request. Main Enquiries: +44 (0)20 7293 5000.

Photography
Amanda Harvey
Catalogue Designer
Simon Hiscocks
Colour Editor
Lee Hillier
Production Controller
David Mountain

BOARD OF DIRECTORS

Domenico De Sole

Chairman of the Board

The Duke of Devonshire

Deputy Chairman of the Board

Tad Smith

President and**Chief Executive Officer**

Jessica Bibliowicz

Linus W. L. Cheung

Kevin Conroy

Daniel S. Loeb

Marsha E. Simms

Diana L. Taylor

Dennis M. Weibling

Harry J. Wilson

David Schwartz

Corporate Secretary**SOTHEBY'S EXECUTIVE
MANAGEMENT**

Jill Bright

Human Resources**& Administration****Worldwide**

Amy Cappellazzo

Chairman**Fine Art Division**

Valentino D. Carlotti

Business Development**Worldwide**

John Cahill

Chief Commercial Officer**Worldwide**

Kevin Ching

Chief Executive Officer**Asia**

Ken Citron

Operations & Chief**Transformation Officer****Worldwide**

Lauren Gioia

Communications**Worldwide**

David Goodman

Digital Development**& Marketing****Worldwide**

Mike Goss

Chief Financial Officer

Jane Levine

Chief Compliance Counsel**Worldwide**

Laurence Nicolas

Managing Director**Jewelry & Watches****Worldwide**

Jonathan Olsoff

General Counsel**Worldwide**

Jan Prasens

Managing Director**Europe, Middle East, Russia,****India and Africa**

Allan Schwartzman

Chairman**Fine Art Division**

Patti Wong

Chairman**Asia****SOTHEBY'S INTERNATIONAL
COUNCIL**

Robin Woodhead

Chairman

Jean Fritts

Deputy Chairman

John Marion

Honorary Chairman

Juan Abelló

Judy Hart Angelo

Anna Catharina Astrup

Nicolas Berggruen

Philippe Bertherat

Lavinia Borromeo

Dr. Alice Y.T. Cheng

Laura M. Cha

Halit Cingillioğlu

Jasper Conran

Henry Cornell

Quinten Dreesmann

Ulla Dreyfus-Best

Jean Marc Etlin

Tania Fares

Comte Serge de Ganay

Ann Getty

Yassmin Ghandehari

Charles de Gunzburg

Ronnie F. Heyman

Shalini Hinduja

Pansy Ho

Prince Aymyn Aga Khan

Catherine Lagrange

Edward Lee

Jean-Claude Marian

Batia Ofer

Georg von Opel

Marchesa Laudomia Pucci Castellano

David Ross

Patrizia Memmo Ruspoli

Rolf Sachs

René H. Scharf

Biggi Schuler-Voith

Judith Taubman

Olivier Widmaier Picasso

The Hon. Hilary M. Weston,

CM, CVO, OOnt

CHAIRMAN'S OFFICE**AMERICAS**

Lisa Dennison

Benjamin Doller

George Wachter

Thomas Bompard

Lulu Creel

Nina del Rio

Mari-Claudia Jimenez

Brooke Lampley

Gary Schuler

Simon Shaw

Lucian Simmons

August Uribe

EUROPE

Oliver Barker

Helena Newman

Mario Tavella

Alex Bell

Michael Berger-Sandhofer

David Bennett

Lord Dalmeny

Claudia Dwek

Edward Gibbs

George Gordon

Franka Haiderer

Henry Howard-Sneyd

Caroline Lang

Cedric Lienart

Daniela Mascetti

Wendy Philips

Lord Poltimore

Samuel Valette

Albertine Verlinde

Roxane Zand

ASIA

Patti Wong

Nicolas Chow

Lisa Chow

Jen Hua

Yasuaki Ishizaka

Wendy Lin

Rachel Shen



BERLAND



ES OF SWITZER

LIMITED

HOTEL LEOFRIC)
Y

WATCH SPECIALIS

Handwritten notes in blue ink:
at London
to order
to only
The

Date

31

Handwritten notes in blue ink:
Ms Rolex Oyster
Perpetual

Sotheby's
ESTD 1744

Collectors gather here.



WATCHES OF

BROADGATE (UNDER HOTEL LEOFRIC)
COVENTRY

WATCH

THIS WATCH

model No:
minutely examine
certified to be in
leaving the factory

THE ROLEX WATCH

Handwritten in red ink:
Guarantee

the dependable func
for a period of
resulting from ill

DATE

Handwritten in blue ink:
31

Purchase

WATCHES OF SW

60, BROAD